

Statistics 2012 are presented in four ways:

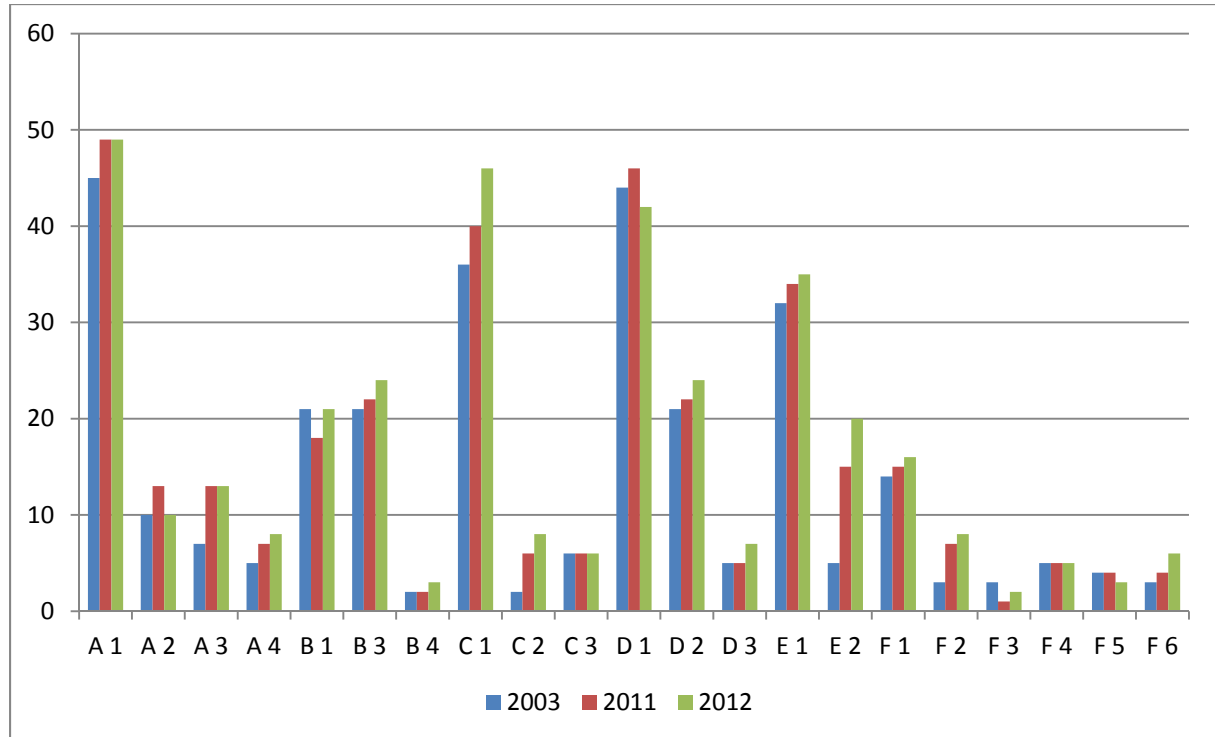
- 1) Broken down by facility type (2003 – 2012)
- 2) Grouped by facility category (2003 – 2012)
- 3) Key data of a long-term comparison (1962 – 2012)
- 4) Summary of data on the care activities 2012

# Statistics 2012 broken down by facility type

## Number of facilities (2003 - 2012)

Total 2003: 294

Total 2012: 356



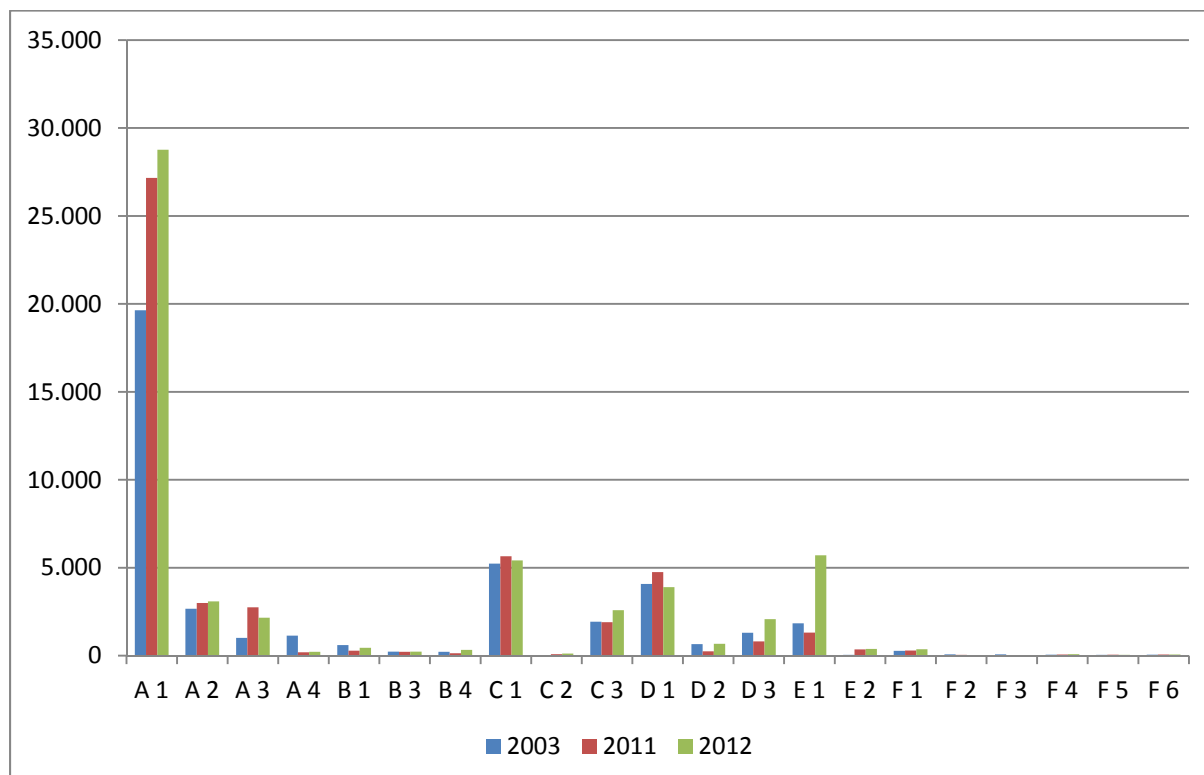
<b>A</b>		<b>Hospital care</b>
	<b>A1</b>	General hospitals
	<b>A2</b>	Specialised hospitals
	<b>A3</b>	Medium/long-term inpatient hospitals
	<b>A4</b>	Hospices
<b>B</b>		<b>Nonhospital services (PHC)</b>
	<b>B1</b>	Outpatient units and clinics
	<b>B3</b>	Public pharmacies and herbal pharmacies
	<b>B4</b>	Convalescence homes
<b>C</b>		<b>Services for the mentally ill</b>
	<b>C1</b>	Residential services and multipurpose centres for the mentally ill
	<b>C2</b>	Non-residential services for the mentally ill
	<b>C3</b>	Integrated territorial services for the mentally
<b>D</b>		<b>Services for the physically, mentally, psychologically and sensorially disabled</b>
	<b>D1</b>	Residential services and multipurpose centres for the disabled
	<b>D2</b>	Non-residential services for the disabled
	<b>D4</b>	Integrated territorial services for the disabled
<b>E</b>		<b>Services for the elderly</b>
	<b>E1</b>	Residential services and multipurpose centres for the elderly
	<b>E2</b>	Day services for the elderly
	<b>E3</b>	Alzheimer's and dementia units
<b>F</b>		<b>Miscellaneous social/welfare services</b>
	<b>F1</b>	Residential serv./multipurpose centres for people in financial difficulties
	<b>F2</b>	Therapeutic communities

	<b>F3</b>	Educational/welfare institution
	<b>F4</b>	Non-residential services for people with financial/social difficulties
	<b>F5</b>	Holiday homes for guests
	<b>F6</b>	Others

## Number of coworkers (2003 - 2012)

Total 2003: 41.180

Total 2012: 56.691



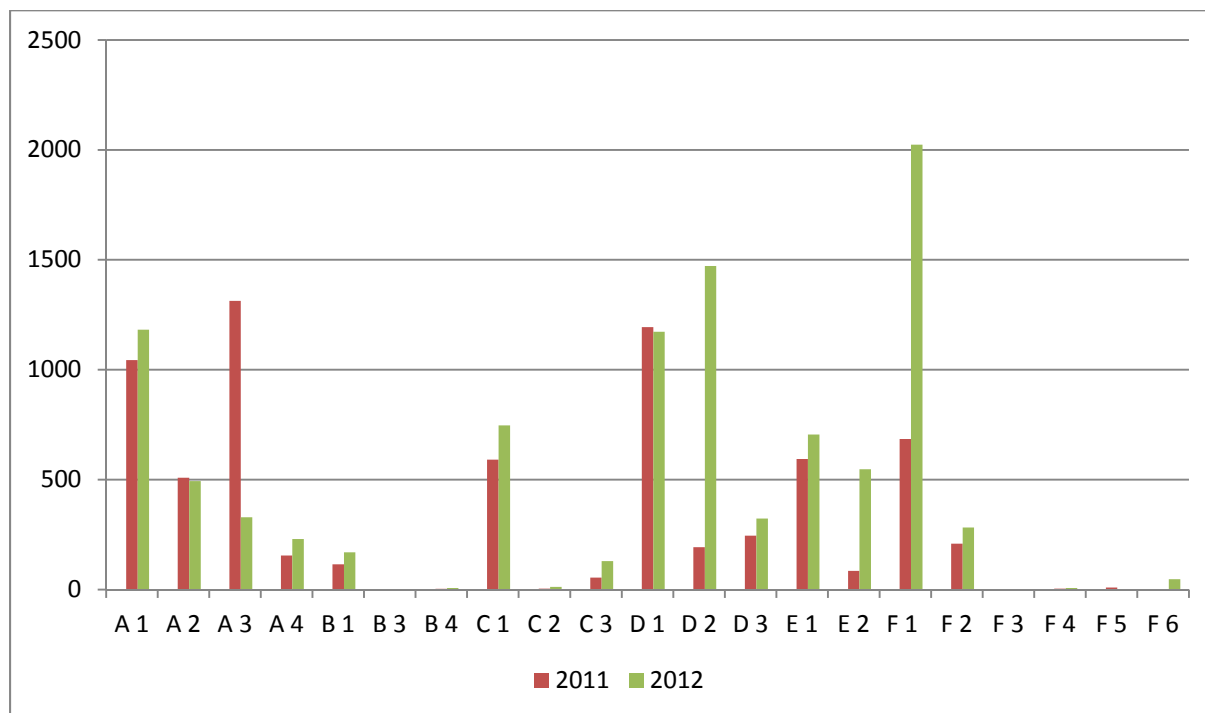
<b>A</b>		<b>Hospital care</b>
	<b>A1</b>	General hospitals
	<b>A2</b>	Specialised hospitals
	<b>A3</b>	Medium/long-term inpatient hospitals
	<b>A4</b>	Hospices
<b>B</b>		<b>Nonhospital services (PHC)</b>
	<b>B1</b>	Outpatient units and clinics
	<b>B3</b>	Public pharmacies and herbal pharmacies
	<b>B4</b>	Convalescence homes
<b>C</b>		<b>Services for the mentally ill</b>
	<b>C1</b>	Residential services and multipurpose centres for the mentally ill
	<b>C2</b>	Non-residential services for the mentally ill
	<b>C3</b>	Integrated territorial services for the mentally
<b>D</b>		<b>Services for the physically, mentally, psychologically and sensorially disabled</b>
	<b>D1</b>	Residential services and multipurpose centres for the disabled
	<b>D2</b>	Non-residential services for the disabled
	<b>D4</b>	Integrated territorial services for the disabled
<b>E</b>		<b>Services for the elderly</b>
	<b>E1</b>	Residential services and multipurpose centres for the elderly
	<b>E2</b>	Day services for the elderly

	<b>E3</b>	Alzheimer's and dementia units
<b>F</b>		<b>Miscellaneous social/welfare services</b>
	<b>F1</b>	Residential serv./multipurpose centres for people in financial difficulties
	<b>F2</b>	Therapeutic communities
	<b>F3</b>	Educational/welfare institution
	<b>F4</b>	Non-residential services for people with financial/social difficulties
	<b>F5</b>	Holiday homes for guests
	<b>F6</b>	Others

## Number of volunteers 2011-2012

Total 2011: **7.006**

Total 2012: **9.878**



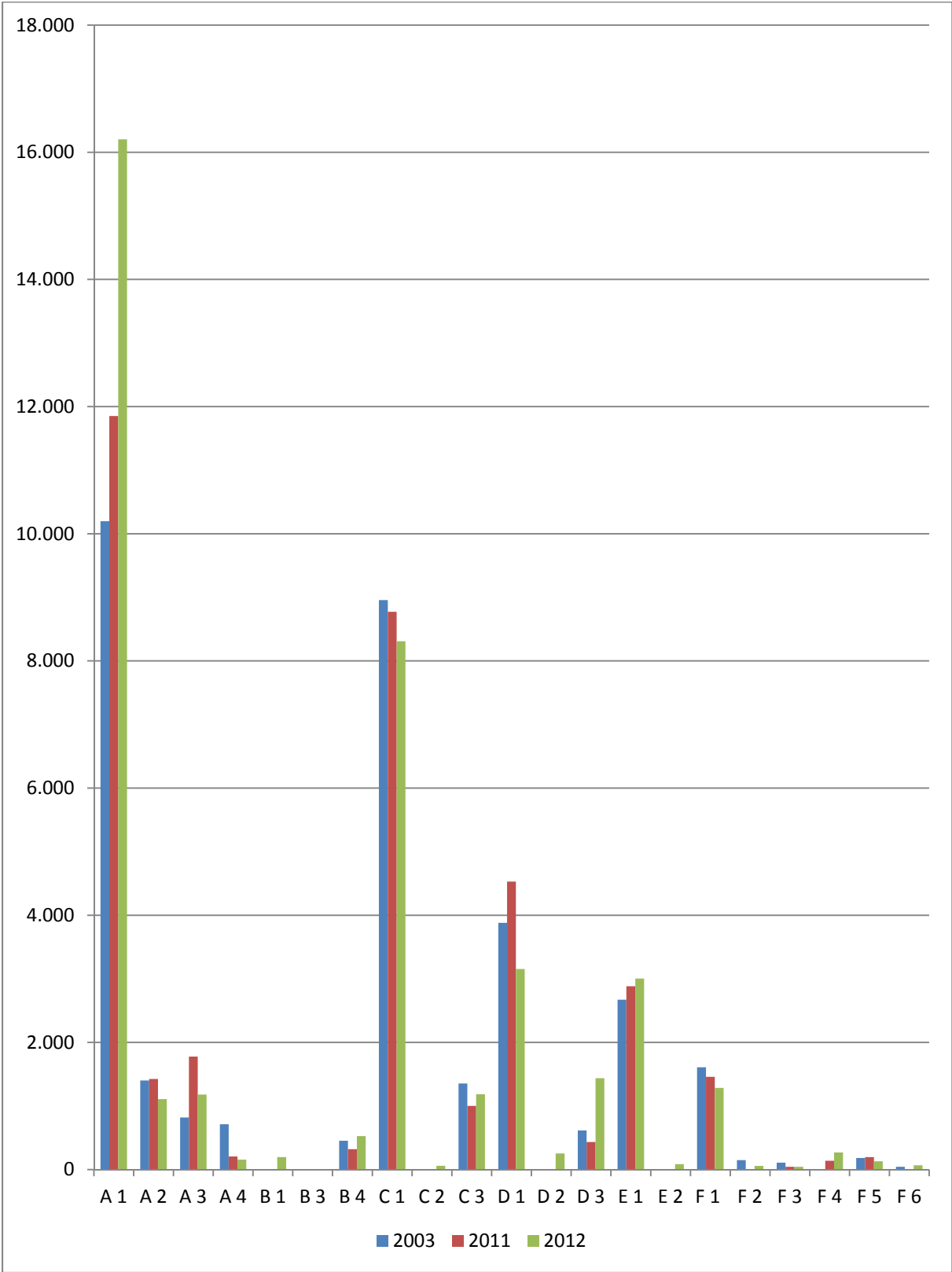
<b>A</b>		<b>Hospital care</b>
	<b>A1</b>	General hospitals
	<b>A2</b>	Specialised hospitals
	<b>A3</b>	Medium/long-term inpatient hospitals
	<b>A4</b>	Hospices
<b>B</b>		<b>Nonhospital services (PHC)</b>
	<b>B1</b>	Outpatient units and clinics
	<b>B3</b>	Public pharmacies and herbal pharmacies
	<b>B4</b>	Convalescence homes
<b>C</b>		<b>Services for the mentally ill</b>
	<b>C1</b>	Residential services and multipurpose centres for the mentally ill
	<b>C2</b>	Non-residential services for the mentally ill
	<b>C3</b>	Integrated territorial services for the mentally
<b>D</b>		<b>Services for the physically, mentally, psychologically and sensorially disabled</b>
	<b>D1</b>	Residential services and multipurpose centres for the disabled
	<b>D2</b>	Non-residential services for the disabled

	<b>D4</b>	Integrated territorial services for the disabled
<b>E</b>		<b>Services for the elderly</b>
	<b>E1</b>	Residential services and multipurpose centres for the elderly
	<b>E2</b>	Day services for the elderly
	<b>E3</b>	Alzheimer's and dementia units
<b>F</b>		<b>Miscellaneous social/welfare services</b>
	<b>F1</b>	Residential serv./multipurpose centres for people in financial difficulties
	<b>F2</b>	Therapeutic communities
	<b>F3</b>	Educational/welfare institution
	<b>F4</b>	Non-residential services for people with financial/social difficulties
	<b>F5</b>	Holiday homes for guests
	<b>F6</b>	Others

# Number of beds (2003 - 2012)

Total 2003: 33.156

Total 2012: 38.771



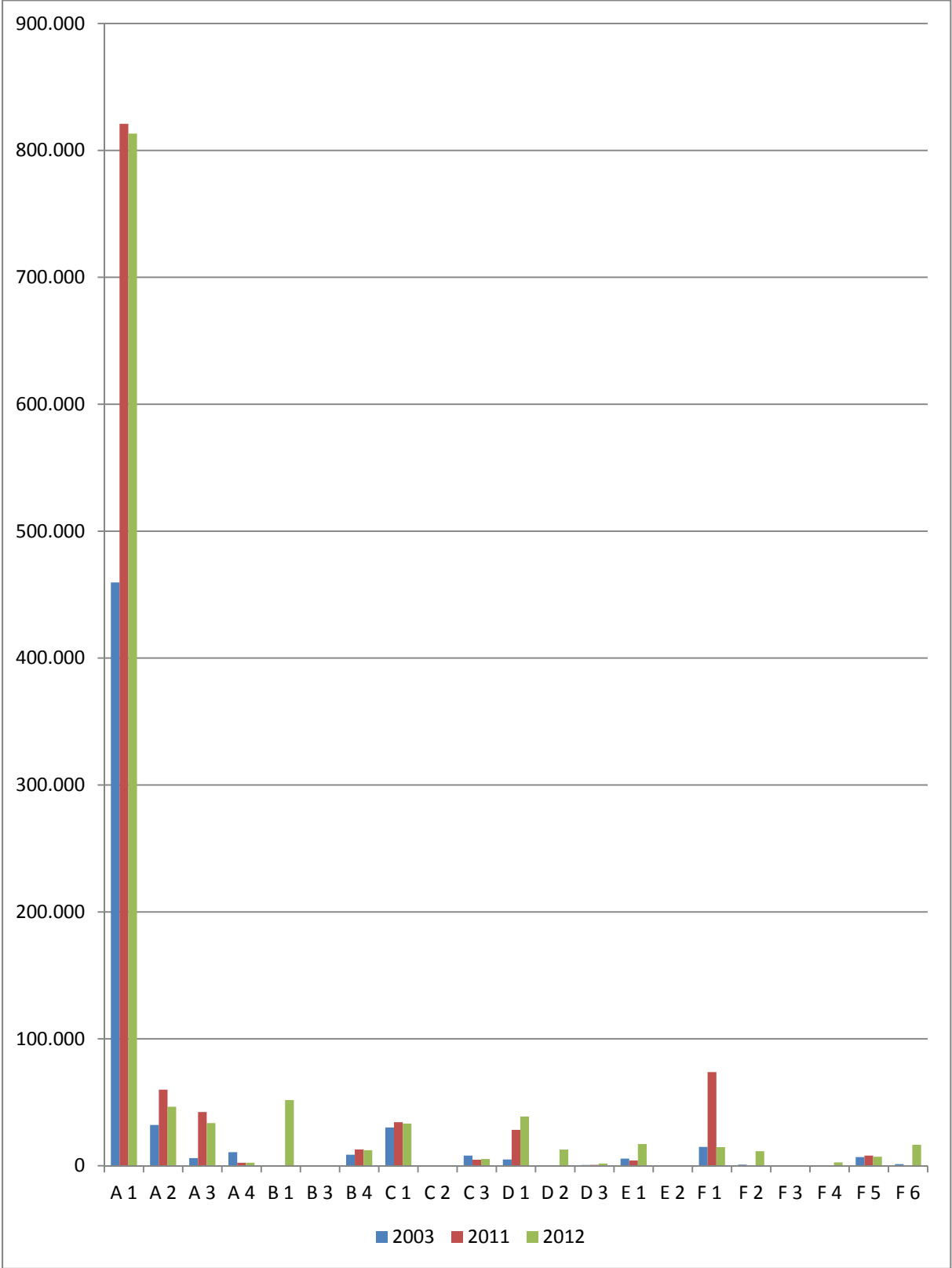
<b>A</b>		<b>Hospital care</b>
	<b>A1</b>	General hospitals

	<b>A2</b>	Specialised hospitals
	<b>A3</b>	Medium/long-term inpatient hospitals
	<b>A4</b>	Hospices
<b>B</b>		<b>Nonhospital services (PHC)</b>
	<b>B1</b>	Outpatient units and clinics
	<b>B3</b>	Public pharmacies and herbal pharmacies
	<b>B4</b>	Convalescence homes
<b>C</b>		<b>Services for the mentally ill</b>
	<b>C1</b>	Residential services and multipurpose centres for the mentally ill
	<b>C2</b>	Non-residential services for the mentally ill
	<b>C3</b>	Integrated territorial services for the mentally
<b>D</b>		<b>Services for the physically, mentally, psychologically and sensorially disabled</b>
	<b>D1</b>	Residential services and multipurpose centres for the disabled
	<b>D2</b>	Non-residential services for the disabled
	<b>D4</b>	Integrated territorial services for the disabled
<b>E</b>		<b>Services for the elderly</b>
	<b>E1</b>	Residential services and multipurpose centres for the elderly
	<b>E2</b>	Day services for the elderly
	<b>E3</b>	Alzheimer's and dementia units
<b>F</b>		<b>Miscellaneous social/welfare services</b>
	<b>F1</b>	Residential serv./multipurpose centres for people in financial difficulties
	<b>F2</b>	Therapeutic communities
	<b>F3</b>	Educational/welfare institution
	<b>F4</b>	Non-residential services for people with financial/social difficulties
	<b>F5</b>	Holiday homes for guests
	<b>F6</b>	Others

# Number of clients (2003 - 2012)

Total 2003: 590.623

Total 2012: 1.121.505



<b>A</b>		<b>Hospital care</b>
	<b>A1</b>	General hospitals



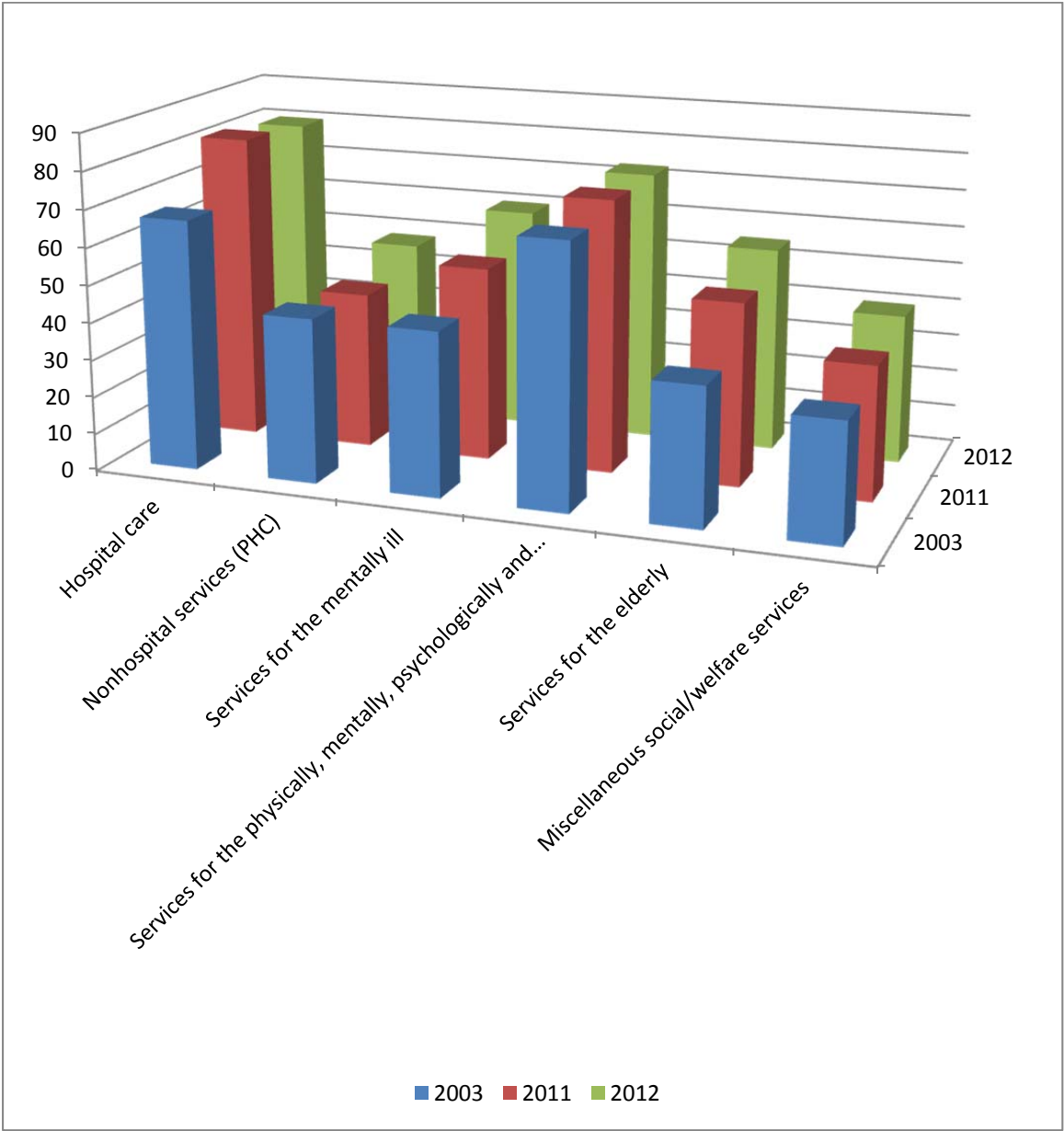
	<b>A2</b>	Specialised hospitals
	<b>A3</b>	Medium/long-term inpatient hospitals
	<b>A4</b>	Hospices
<b>B</b>		<b>Nonhospital services (PHC)</b>
	<b>B1</b>	Outpatient units and clinics
	<b>B3</b>	Public pharmacies and herbal pharmacies
	<b>B4</b>	Convalescence homes
<b>C</b>		<b>Services for the mentally ill</b>
	<b>C1</b>	Residential services and multipurpose centres for the mentally ill
	<b>C2</b>	Non-residential services for the mentally ill
	<b>C3</b>	Integrated territorial services for the mentally
<b>D</b>		<b>Services for the physically, mentally, psychologically and sensorially disabled</b>
	<b>D1</b>	Residential services and multipurpose centres for the disabled
	<b>D2</b>	Non-residential services for the disabled
	<b>D4</b>	Integrated territorial services for the disabled
<b>E</b>		<b>Services for the elderly</b>
	<b>E1</b>	Residential services and multipurpose centres for the elderly
	<b>E2</b>	Day services for the elderly
	<b>E3</b>	Alzheimer's and dementia units
<b>F</b>		<b>Miscellaneous social/welfare services</b>
	<b>F1</b>	Residential serv./multipurpose centres for people in financial difficulties
	<b>F2</b>	Therapeutic communities
	<b>F3</b>	Educational/welfare institution
	<b>F4</b>	Non-residential services for people with financial/social difficulties
	<b>F5</b>	Holiday homes for guests
	<b>F6</b>	Others

# Statistics 2012 grouped by facility categories

## Number of facilities (2003 – 2012) by category

Total 2003: **294**

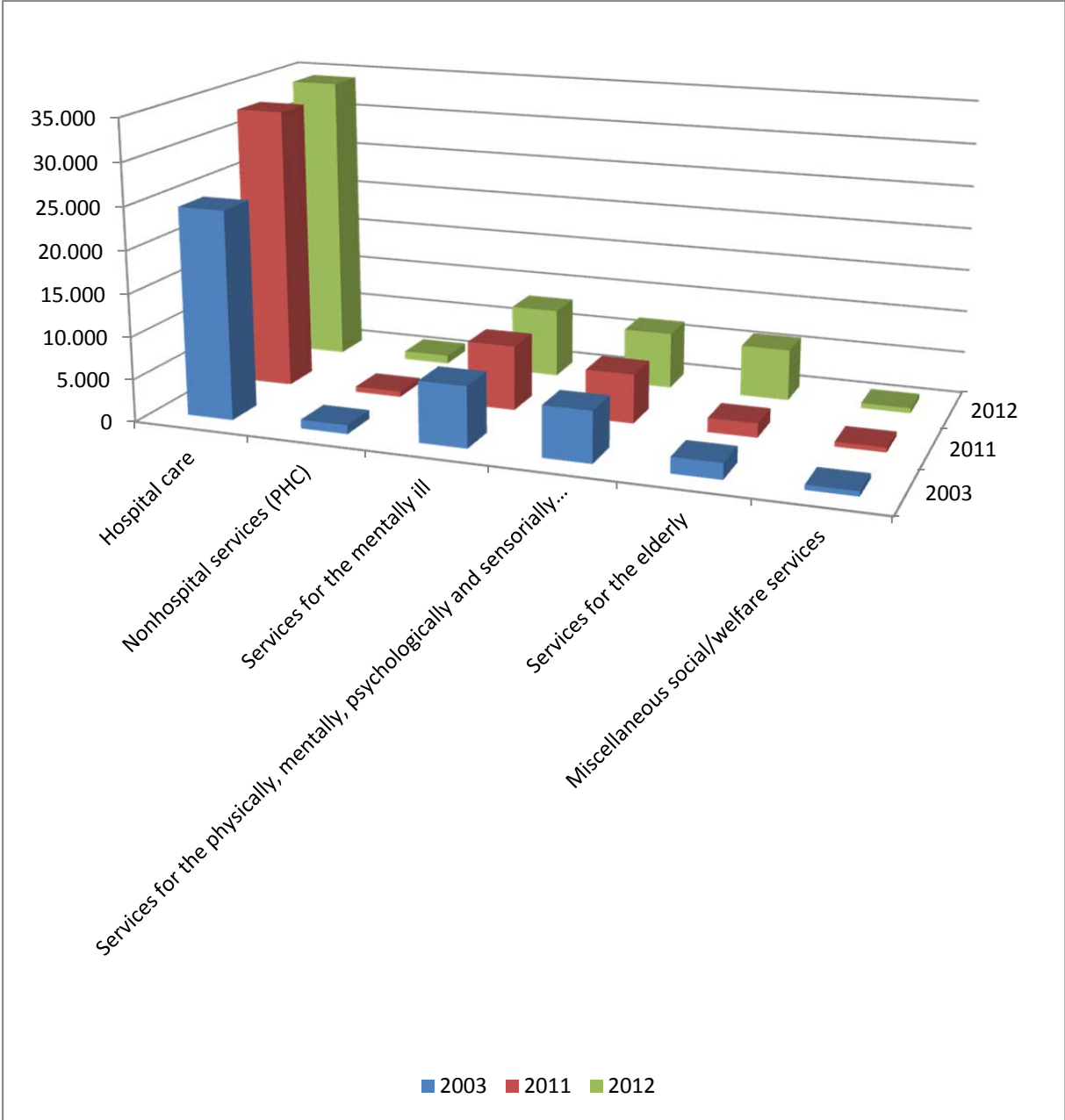
Total 2012: **356**



# Number of coworkers (2003 – 2012) by category

Total 2003: **41.180**

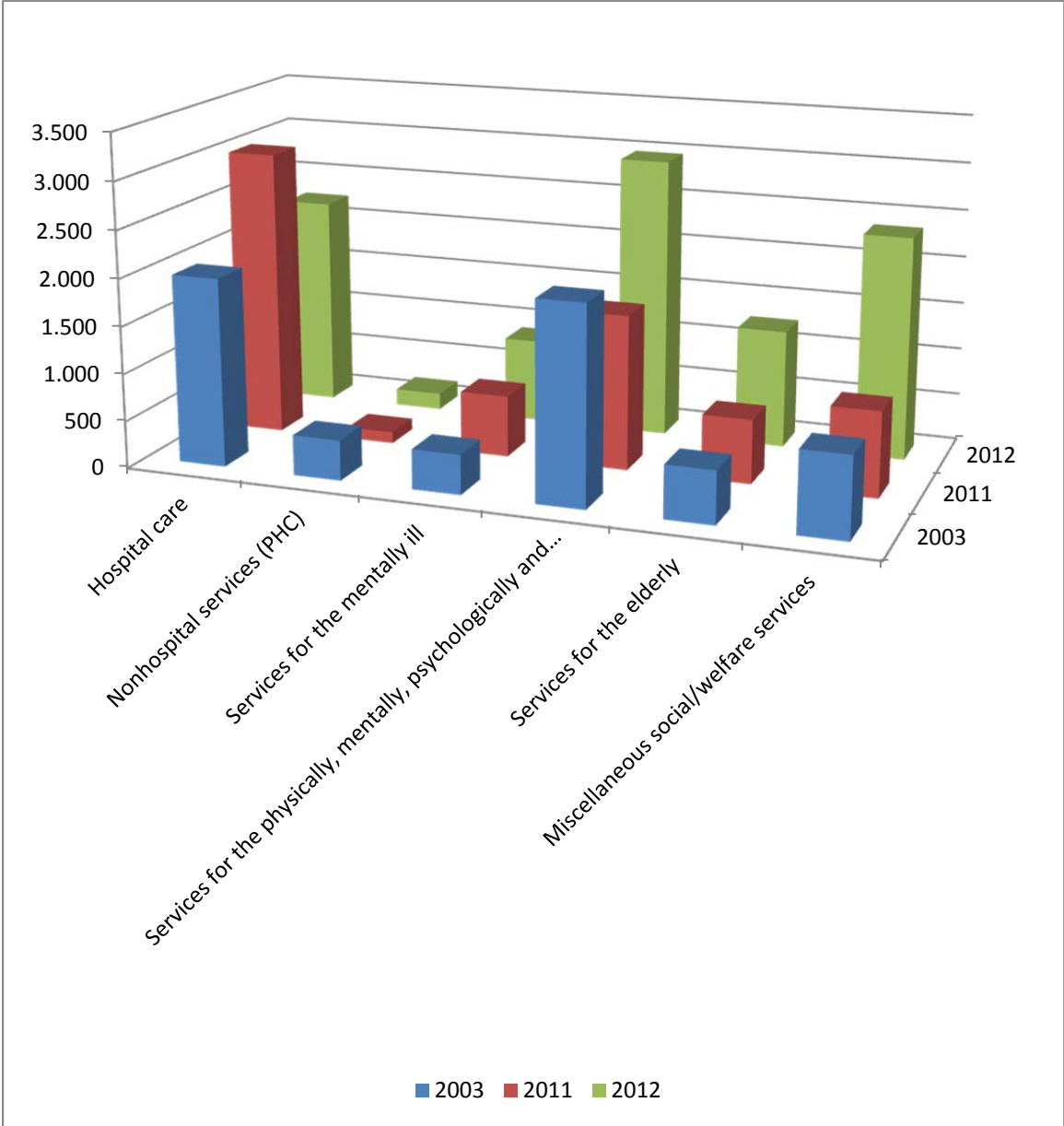
Total 2012: **56.691**



# Number of volunteers (2003 – 2012) by category

Total 2003: **6.365**

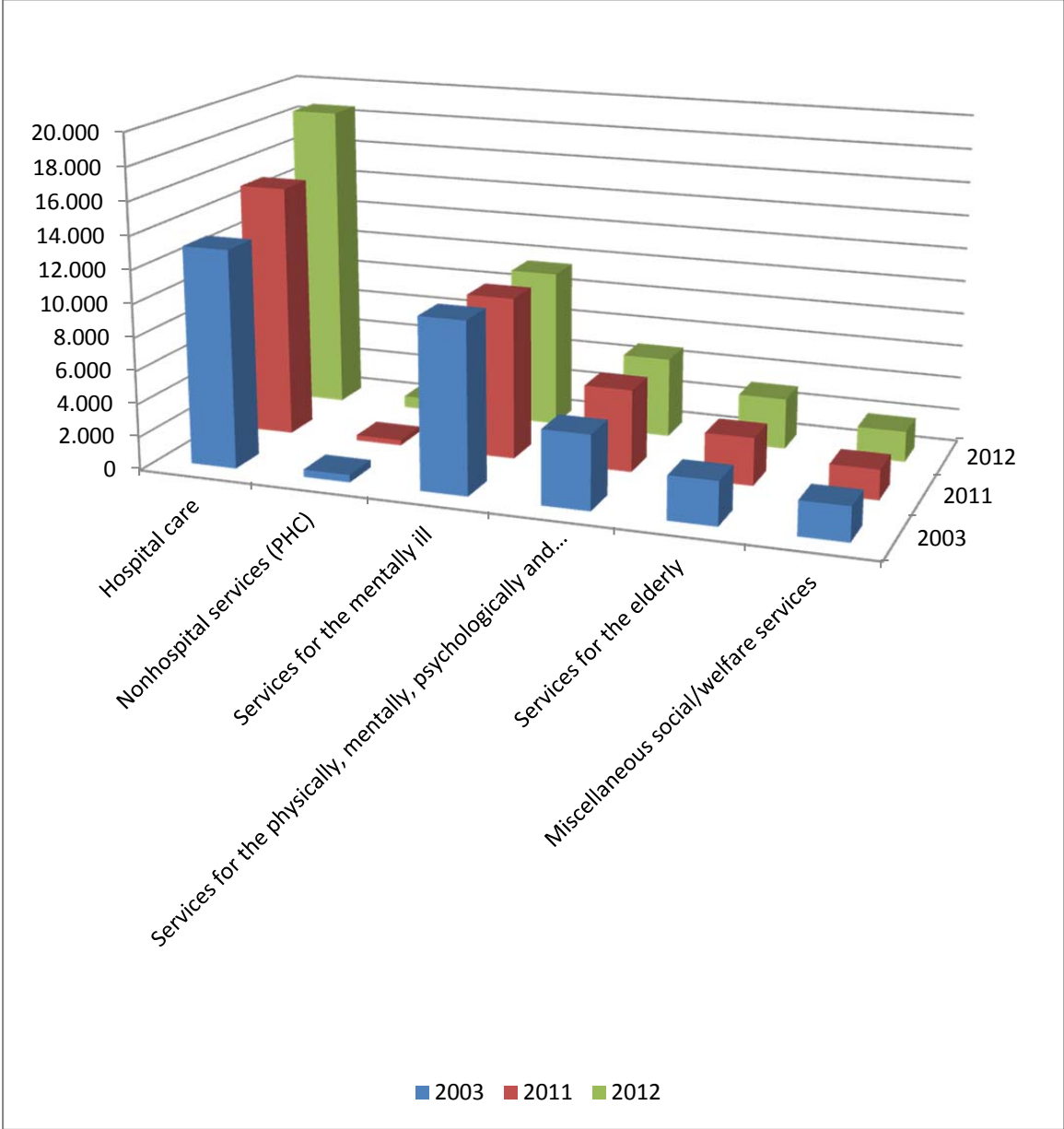
Total 2012: **9.878**



# Number of beds (2003 – 2012) by category

Total 2003: **33.156**

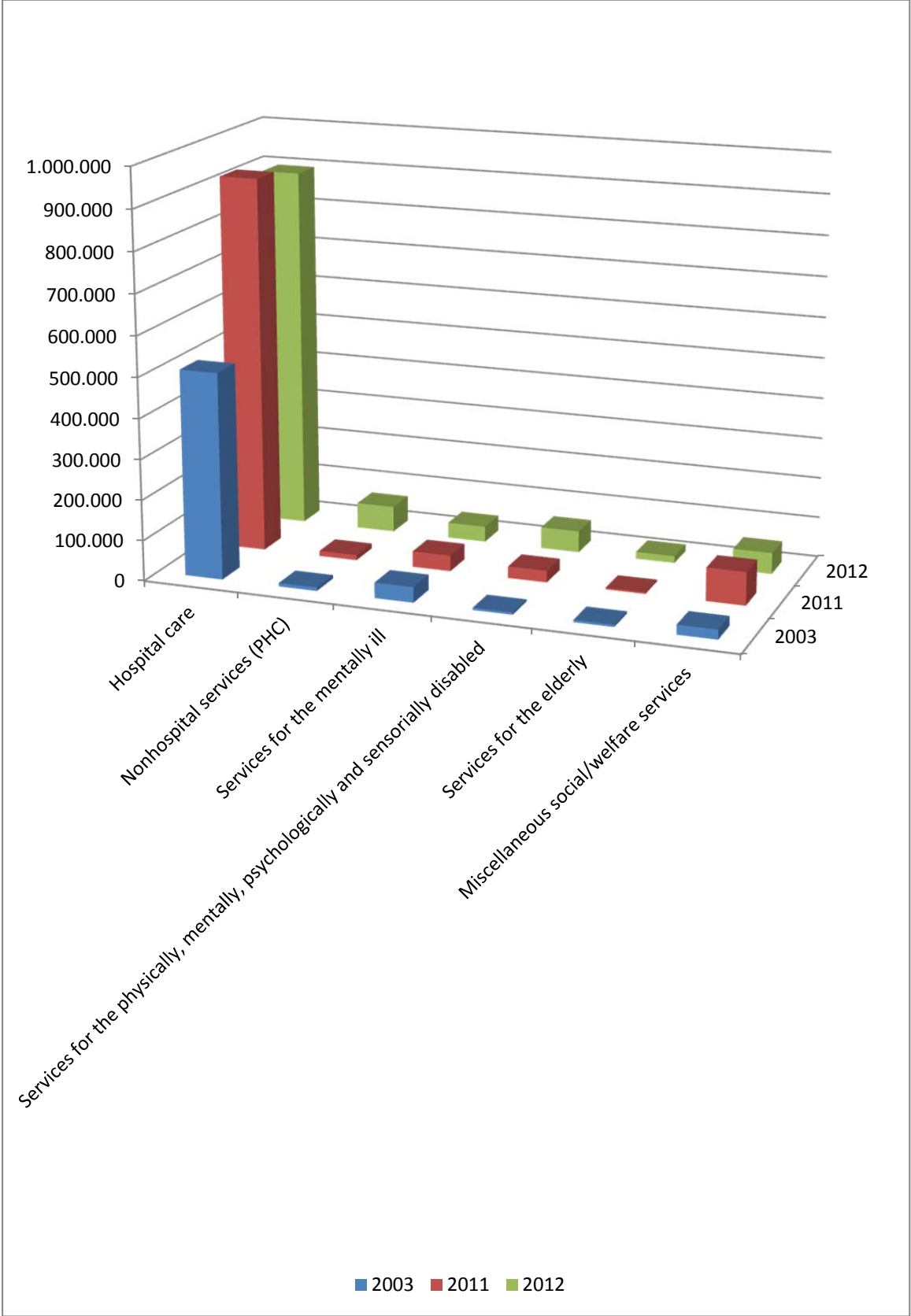
Total 2012: **38.711**



# Number of clients (2003 – 2012) by category

Total 2003: **590.623**

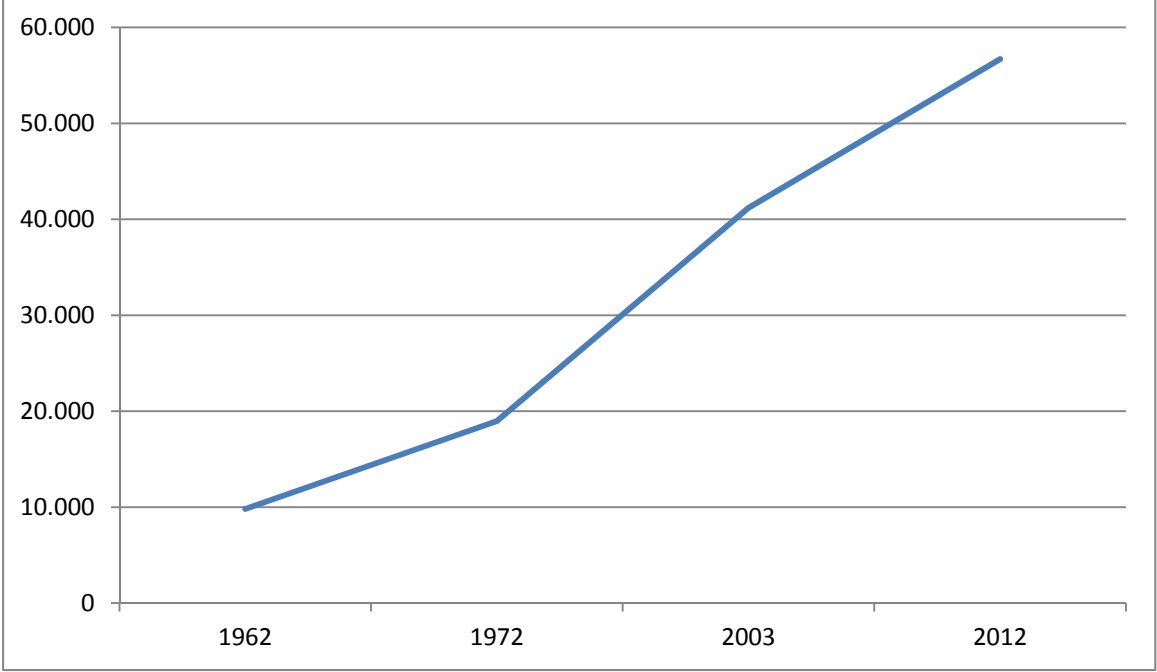
Total 2012: **1.121.505**



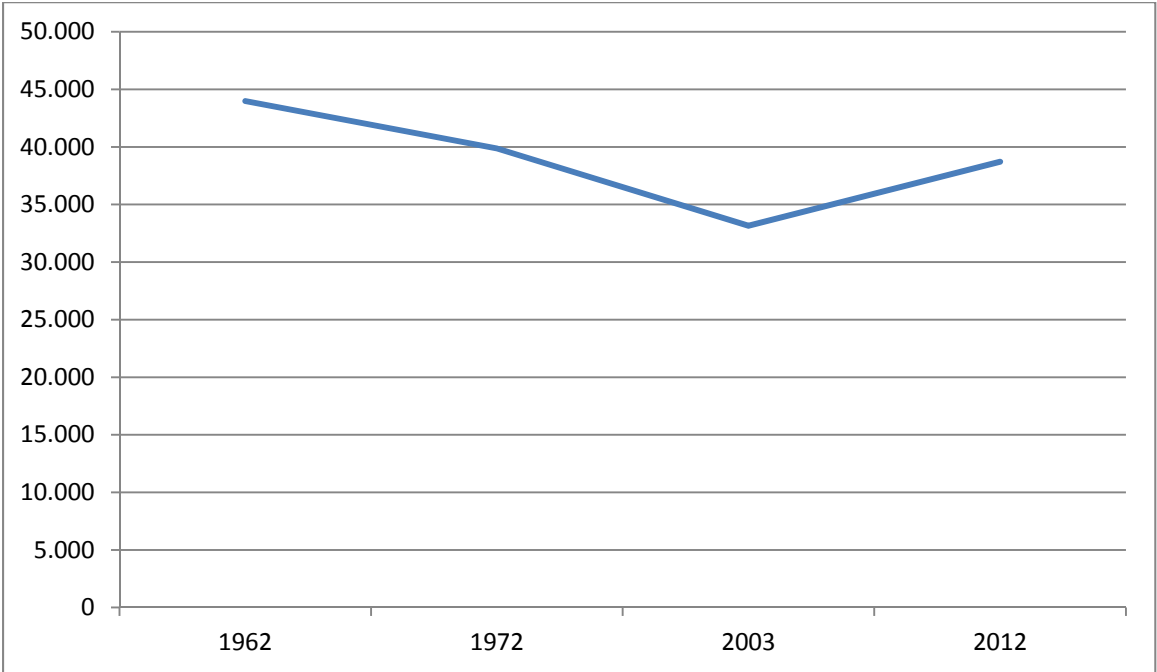
# Statistics 2012 – Long-term comparison

---

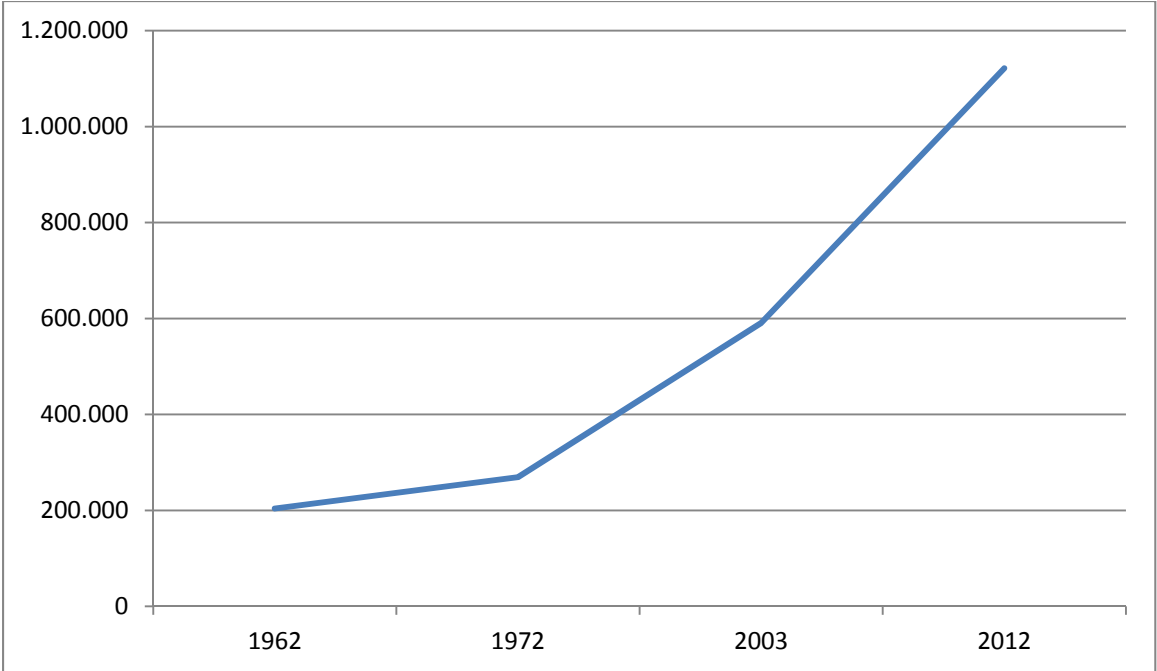
## Coworkers (long-term comparison)



## Beds (long-term comparison)



# Clients (long-term comparison)





## THE ORDER'S CARE WORK IN 2012

CLASSIFICATION		Centres/ Services	Beds	Guests/ Admissions	Days' admissions/ attendances	Personnel	Volunteers
<b>A</b>	A1 - General hospitals	49	16.203	813.260	16.025.122	28.767	1.182
	A2 - Specialised hospitals	10	1.109	46.508	1.277.427	3.088	493
	A3 - Medium/long-term inpatient care	13	1.179	33.644	1.353.818	2.158	329
	A4 - Hospices	8	157	2.370	49.122	216	230
	<b>Hospital care</b>	<b>80</b>	<b>18.648</b>	<b>895.782</b>	<b>18.705.489</b>	<b>34.229</b>	<b>2.234</b>
<b>B</b>	B1 - Non-hospital outpatient care	21	197	51.752	709.487	443	169
	B2 - Pharmacies and/or herbalists	24	-	-	1.524.855	228	-
	B4 - Convalescence and wellness services	3	526	12.232	135.624	324	7
	<b>Non-hospital healthcare services</b>	<b>48</b>	<b>723</b>	<b>63.984</b>	<b>2.369.966</b>	<b>995</b>	<b>176</b>
<b>C</b>	C1 - Residential or residential/day care services for the mentally ill	46	8.310	33.224	2.693.812	5.416	747
	C2 - Day care services for the mentally ill	8	59	62	8.270	115	12
	C3 - Integrated territorial services for the mentally ill	6	1.186	5.311	469.072	2.583	129
	<b>Services for the mentally ill</b>	<b>60</b>	<b>9.555</b>	<b>38.597</b>	<b>3.171.154</b>	<b>8.114</b>	<b>888</b>
<b>D</b>	D1 - Residential or residential/day care services for the disabled	42	3.154	38.793	908.140	3.896	1.173
	D2 - Day care services for the disabled	24	253	12.748	90.674	678	1.472
	D3 - Integrated territorial services for the disabled	7	1.437	1.777	480.580	2.079	323
	<b>Services for the disabled</b>	<b>73</b>	<b>4.844</b>	<b>53.318</b>	<b>1.479.394</b>	<b>6.653</b>	<b>2.968</b>
<b>E</b>	E1 - Residential or residential/day care services for the elderly	35	3.004	17.157	806.982	5.705	705
	E2 - Day care services for the elderly	20	85	67	44.198	381	547
	<b>Services for the elderly</b>	<b>55</b>	<b>3.089</b>	<b>17.224</b>	<b>851.180</b>	<b>6.086</b>	<b>1.252</b>
<b>F</b>	F1 - Residential or residential/day care services for people with financial and social problems	16	1.284	14.702	311.013	366	2.024
	F2 - Day services for people with financial and social problems	8	58	11.482	214.731	18	282
	F3 - Services for children with behavioural and/or family problems	2	43	105	16.209	36	-
	F4 - Therapeutic communities for "substance-dependent" people	5	270	2.678	77.374	84	7
	F5 - Holiday homes for guests	3	130	7.098	19.063	48	-
	F6 - Other services	6	67	16.535	36.752	62	47
	<b>Social/welfare services</b>	<b>40</b>	<b>1.852</b>	<b>52.600</b>	<b>675.142</b>	<b>614</b>	<b>2.360</b>
<b>Total</b>		<b>356</b>	<b>38.711</b>	<b>1.121.505</b>	<b>27.252.325</b>	<b>56.691</b>	<b>9.878</b>