

Statistics 2011 are presented in three ways:

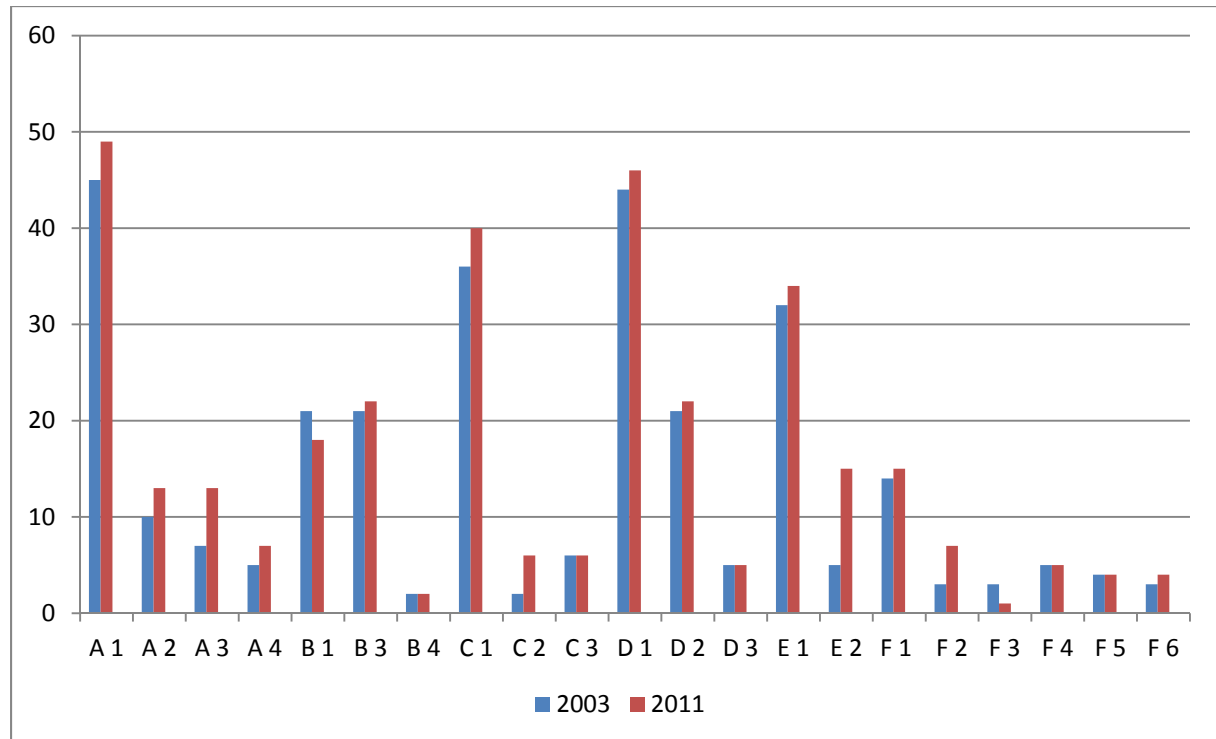
1. broken down by facility type (2003 – 2011)
2. grouped by facility category (2003 – 2011)
3. key data of a long-term comparison (1962 – 2011)

Statistics 2011 broken down by facility type

Number of facilities (2003 - 2011)

Total 2003: **294**

Total 2011: **334**



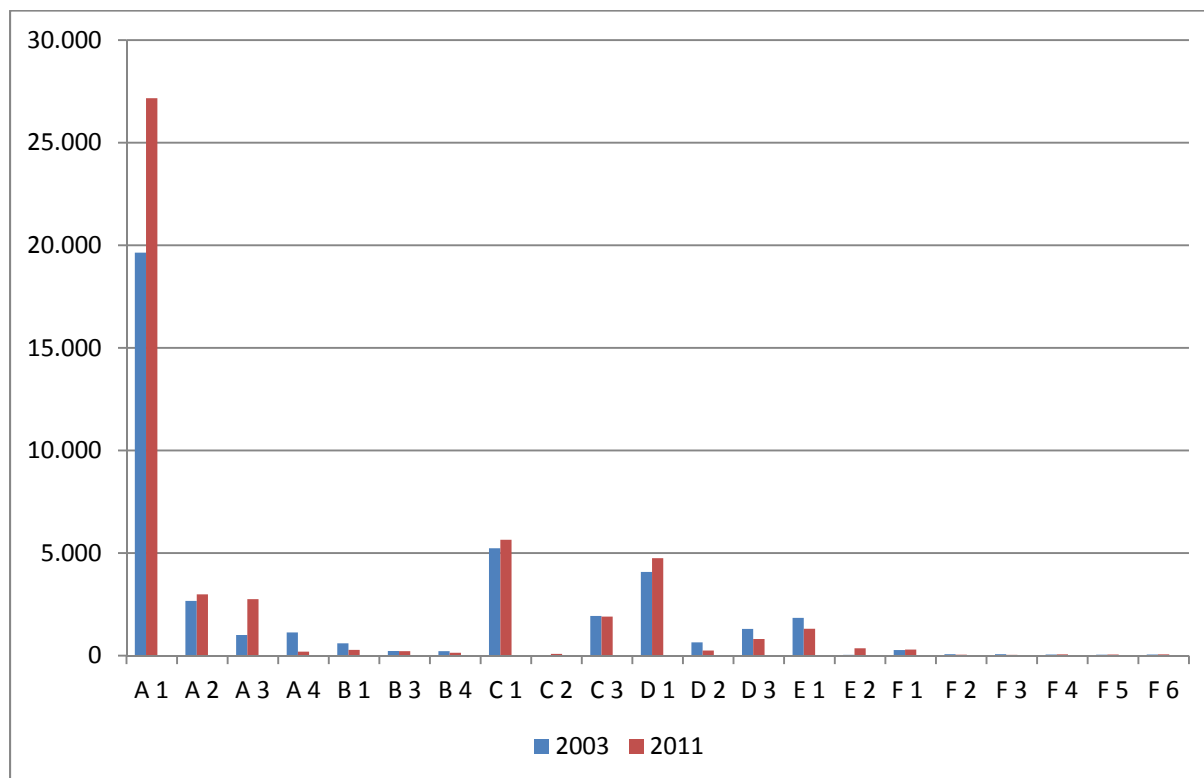
A		Hospital care
	A1	General hospitals
	A2	Specialised hospitals
	A3	Medium/long-term inpatient hospitals
	A4	Hospices
B		Nonhospital services (PHC)
	B1	Outpatient units and clinics
	B3	Public pharmacies and herbal pharmacies
	B4	Convalescence homes
C		Services for the mentally ill
	C1	Residential services and multipurpose centres for the mentally ill
	C2	Non-residential services for the mentally ill
	C3	Integrated territorial services for the mentally
D		Services for the physically, mentally, psychologically and sensorially disabled
	D1	Residential services and multipurpose centres for the disabled
	D2	Non-residential services for the disabled
	D4	Integrated territorial services for the disabled
E		Services for the elderly
	E1	Residential services and multipurpose centres for the elderly
	E2	Day services for the elderly
	E3	Alzheimer's and dementia units
F		Miscellaneous social/welfare services
	F1	Residential serv./multipurpose centres for people in financial difficulties
	F2	Therapeutic communities

	F3	Educational/welfare institution
	F4	Non-residential services for people with financial/social difficulties
	F5	Holiday homes for guests
	F6	Others

Number of coworkers (2003 - 2011)

Total 2003: 41.180

Total 2011: 49.430

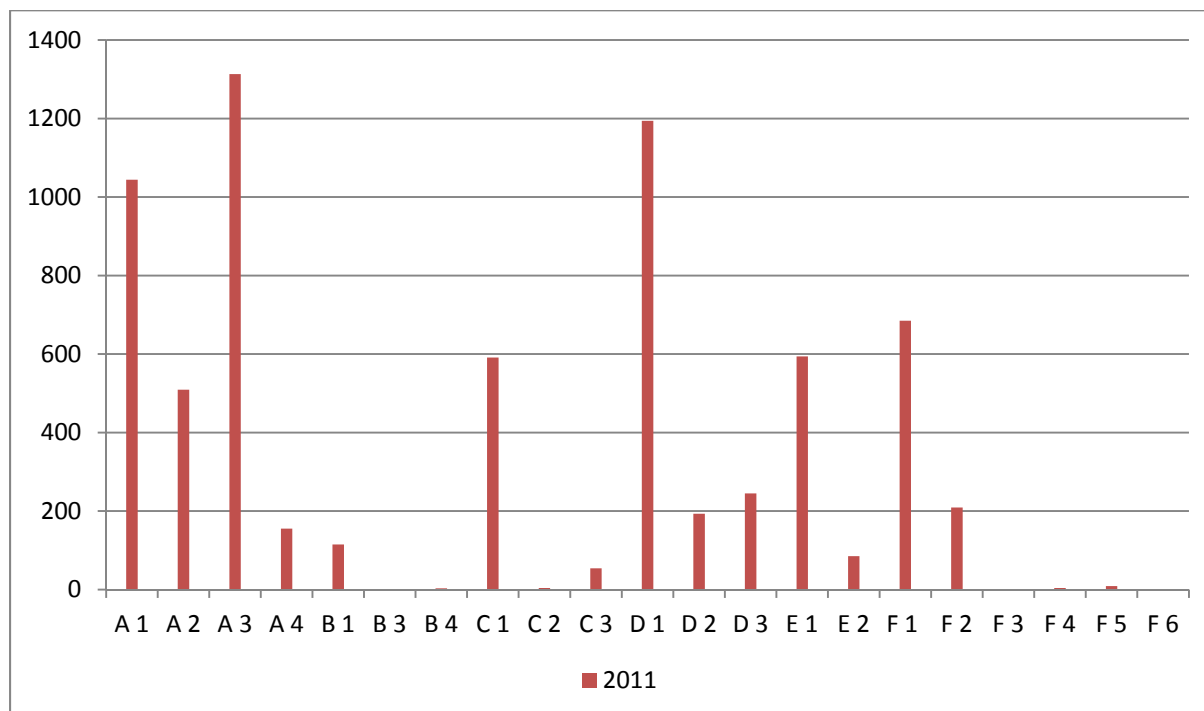


A		Hospital care
	A1	General hospitals
	A2	Specialised hospitals
	A3	Medium/long-term inpatient hospitals
	A4	Hospices
B		Nonhospital services (PHC)
	B1	Outpatient units and clinics
	B3	Public pharmacies and herbal pharmacies
	B4	Convalescence homes
C		Services for the mentally ill
	C1	Residential services and multipurpose centres for the mentally ill
	C2	Non-residential services for the mentally ill
	C3	Integrated territorial services for the mentally ill
D		Services for the physically, mentally, psychologically and sensorially disabled
	D1	Residential services and multipurpose centres for the disabled
	D2	Non-residential services for the disabled
	D4	Integrated territorial services for the disabled
E		Services for the elderly
	E1	Residential services and multipurpose centres for the elderly
	E2	Day services for the elderly

	E3	Alzheimer's and dementia units
F		Miscellaneous social/welfare services
	F1	Residential serv./multipurpose centres for people in financial difficulties
	F2	Therapeutic communities
	F3	Educational/welfare institution
	F4	Non-residential services for people with financial/social difficulties
	F5	Holiday homes for guests
	F6	Others

Number of volunteers 2011

Total 2011: 7.006



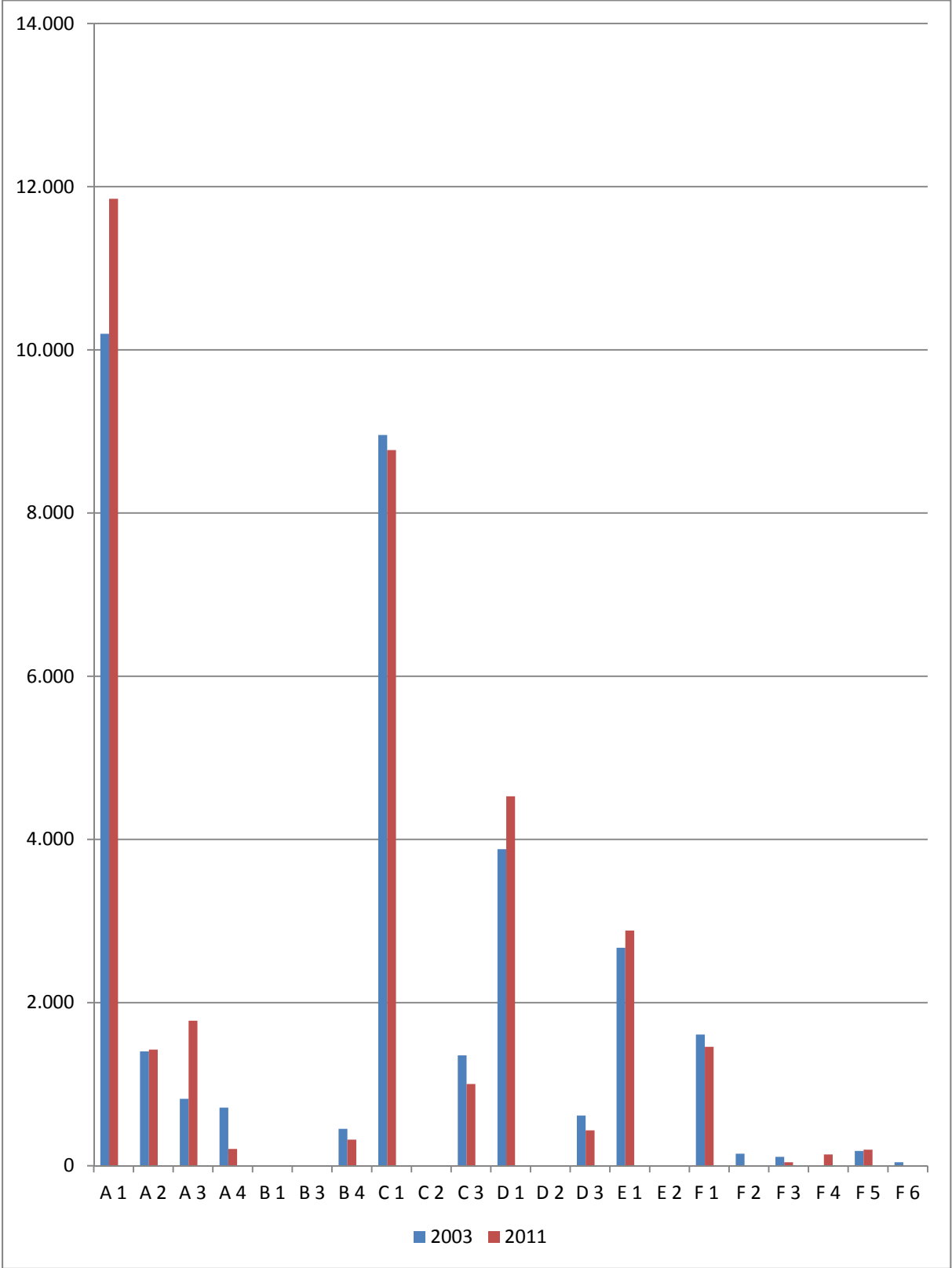
A		Hospital care
	A1	General hospitals
	A2	Specialised hospitals
	A3	Medium/long-term inpatient hospitals
	A4	Hospices
B		Nonhospital services (PHC)
	B1	Outpatient units and clinics
	B3	Public pharmacies and herbal pharmacies
	B4	Convalescence homes
C		Services for the mentally ill
	C1	Residential services and multipurpose centres for the mentally ill
	C2	Non-residential services for the mentally ill
	C3	Integrated territorial services for the mentally
D		Services for the physically, mentally, psychologically and sensorially disabled
	D1	Residential services and multipurpose centres for the disabled
	D2	Non-residential services for the disabled

	D4	Integrated territorial services for the disabled
E		Services for the elderly
	E1	Residential services and multipurpose centres for the elderly
	E2	Day services for the elderly
	E3	Alzheimer's and dementia units
F		Miscellaneous social/welfare services
	F1	Residential serv./multipurpose centres for people in financial difficulties
	F2	Therapeutic communities
	F3	Educational/welfare institution
	F4	Non-residential services for people with financial/social difficulties
	F5	Holiday homes for guests
	F6	Others

Number of beds (2003 - 2011)

Total 2003: 33.156

Total 2011: 35.631



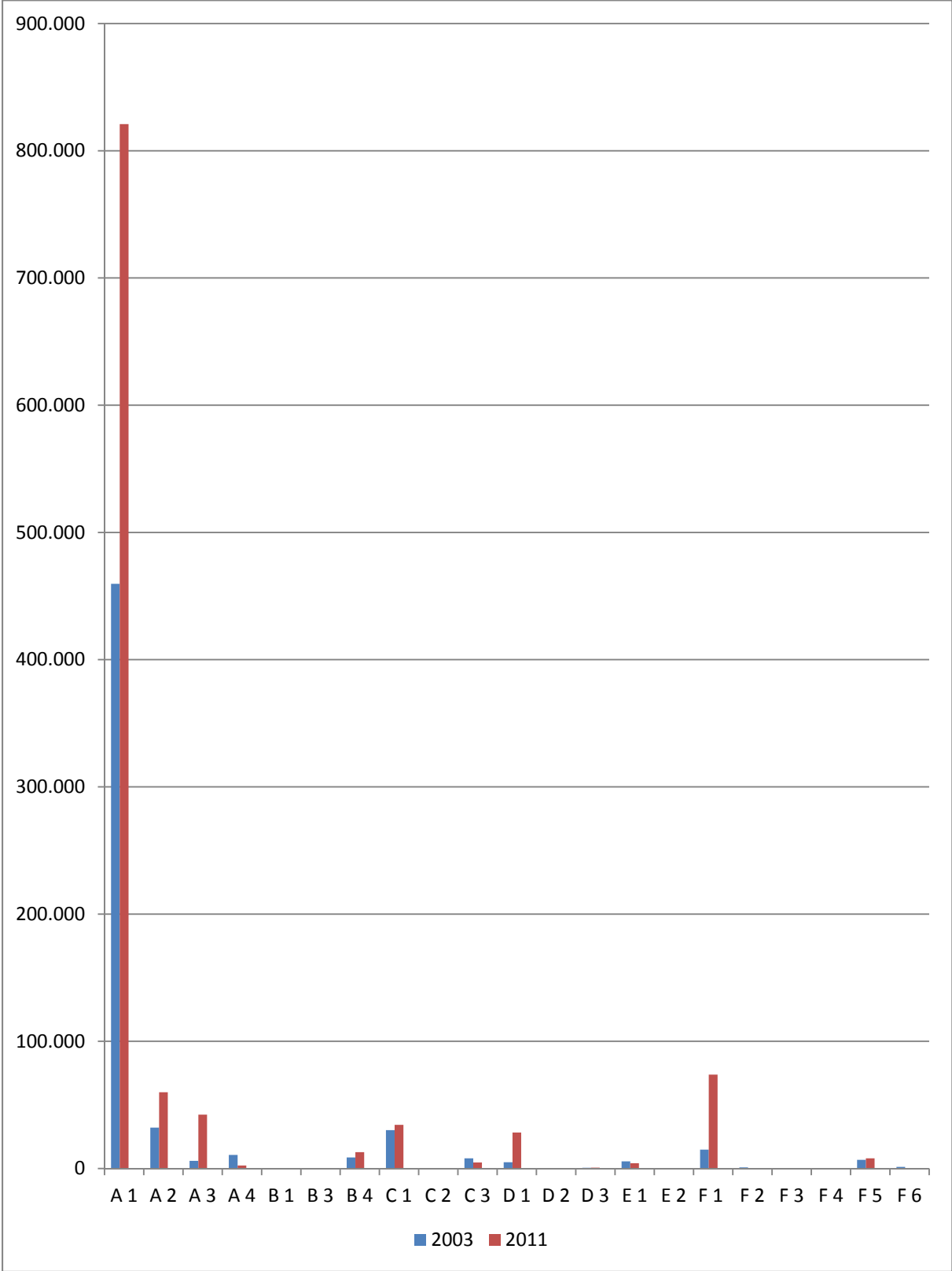
A		Hospital care
	A1	General hospitals

	A2	Specialised hospitals
	A3	Medium/long-term inpatient hospitals
	A4	Hospices
B		Nonhospital services (PHC)
	B1	Outpatient units and clinics
	B3	Public pharmacies and herbal pharmacies
	B4	Convalescence homes
C		Services for the mentally ill
	C1	Residential services and multipurpose centres for the mentally ill
	C2	Non-residential services for the mentally ill
	C3	Integrated territorial services for the mentally
D		Services for the physically, mentally, psychologically and sensorially disabled
	D1	Residential services and multipurpose centres for the disabled
	D2	Non-residential services for the disabled
	D4	Integrated territorial services for the disabled
E		Services for the elderly
	E1	Residential services and multipurpose centres for the elderly
	E2	Day services for the elderly
	E3	Alzheimer's and dementia units
F		Miscellaneous social/welfare services
	F1	Residential serv./multipurpose centres for people in financial difficulties
	F2	Therapeutic communities
	F3	Educational/welfare institution
	F4	Non-residential services for people with financial/social difficulties
	F5	Holiday homes for guests
	F6	Others

Number of clients (2003 - 2011)

Total 2003: 590.623

Total 2011: 1.126.389



A		Hospital care
	A1	General hospitals

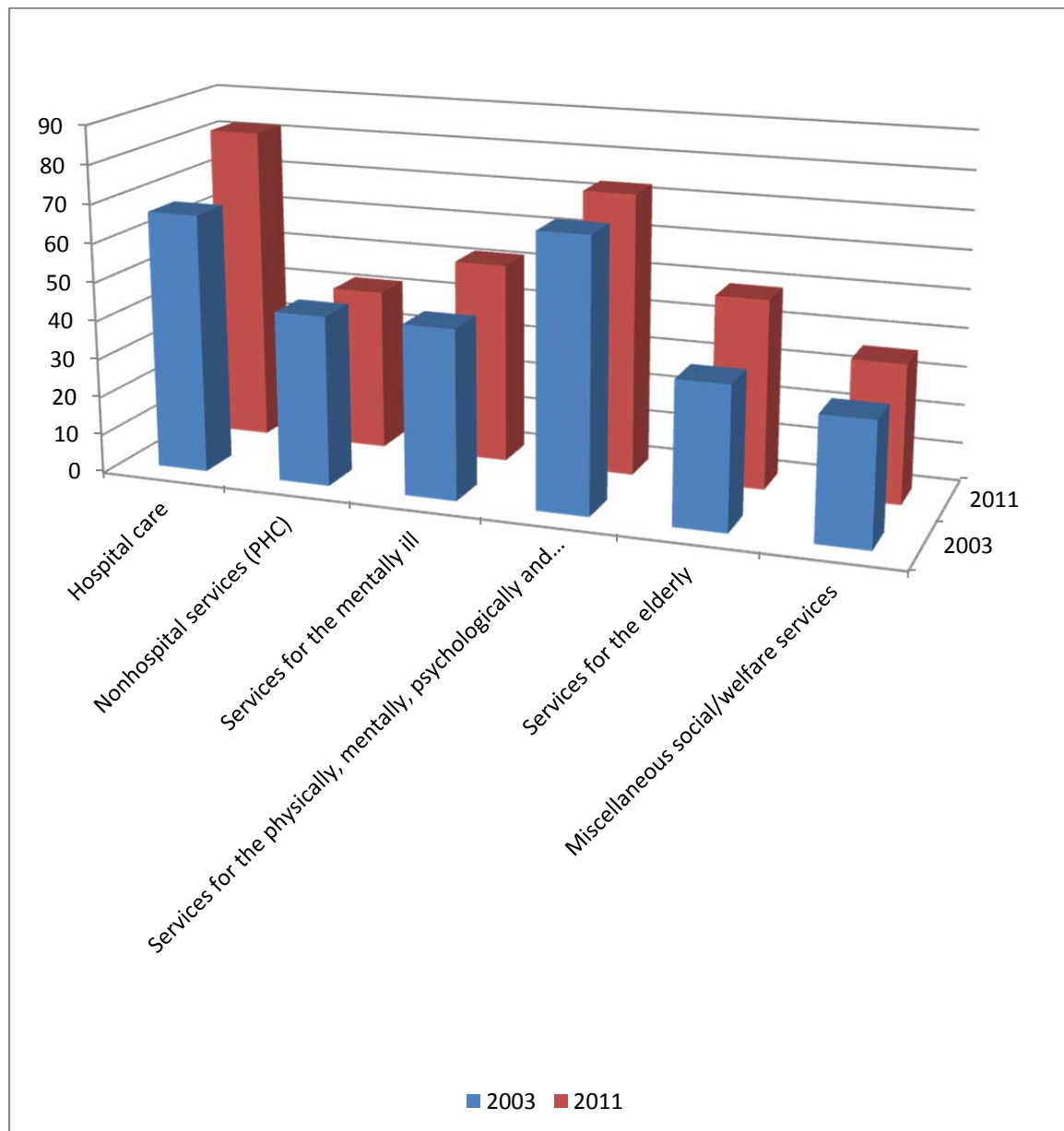
	A2	Specialised hospitals
	A3	Medium/long-term inpatient hospitals
	A4	Hospices
B		Nonhospital services (PHC)
	B1	Outpatient units and clinics
	B3	Public pharmacies and herbal pharmacies
	B4	Convalescence homes
C		Services for the mentally ill
	C1	Residential services and multipurpose centres for the mentally ill
	C2	Non-residential services for the mentally ill
	C3	Integrated territorial services for the mentally
D		Services for the physically, mentally, psychologically and sensorially disabled
	D1	Residential services and multipurpose centres for the disabled
	D2	Non-residential services for the disabled
	D4	Integrated territorial services for the disabled
E		Services for the elderly
	E1	Residential services and multipurpose centres for the elderly
	E2	Day services for the elderly
	E3	Alzheimer's and dementia units
F		Miscellaneous social/welfare services
	F1	Residential serv./multipurpose centres for people in financial difficulties
	F2	Therapeutic communities
	F3	Educational/welfare institution
	F4	Non-residential services for people with financial/social difficulties
	F5	Holiday homes for guests
	F6	Others

Statistics 2011 grouped by facility categories

Number of facilities (2003 – 2011) by category

Total 2003: **294**

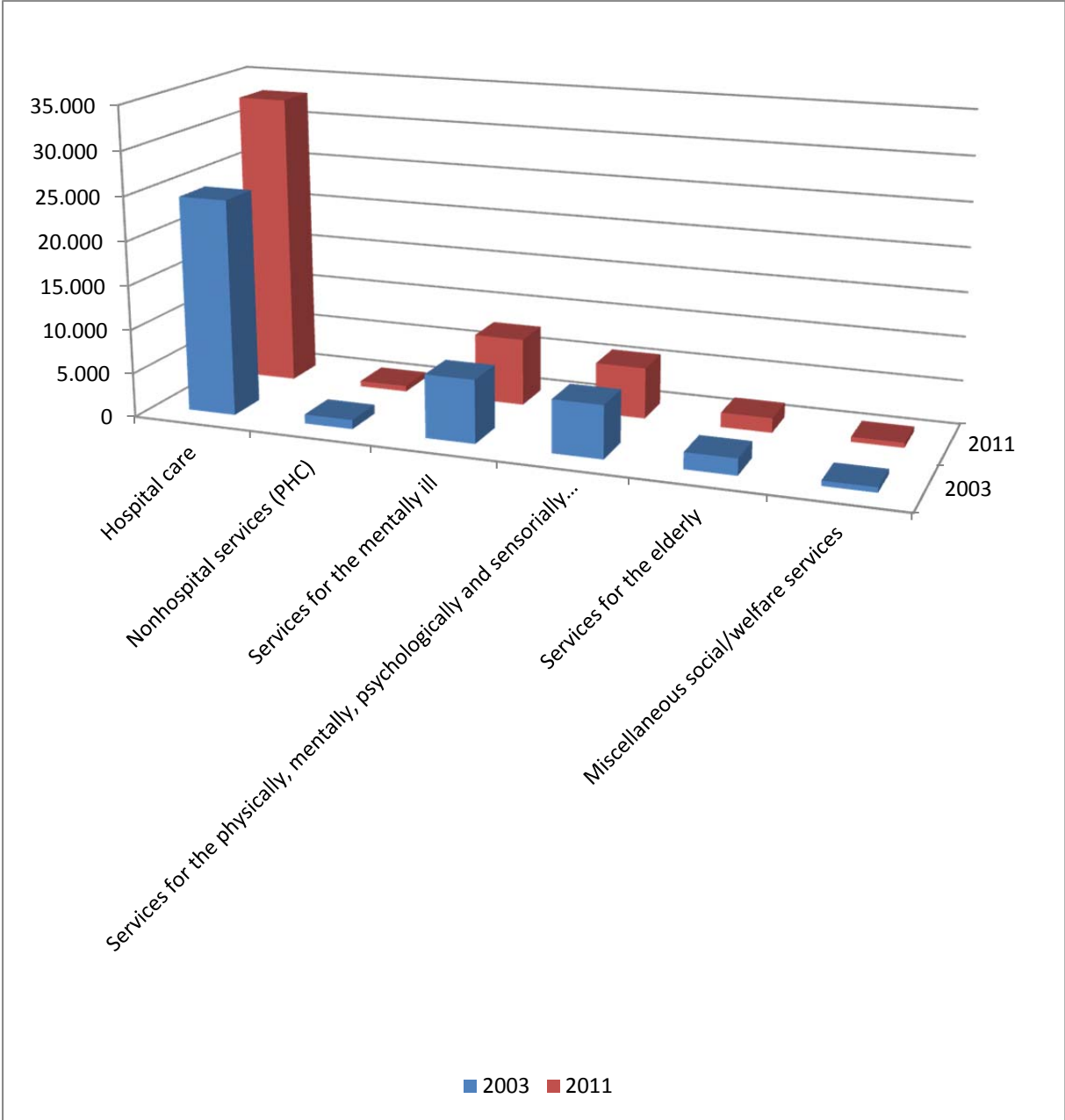
Total 2011: **334**



Number of coworkers (2003 – 2011) by category

Total 2003: **41.180**

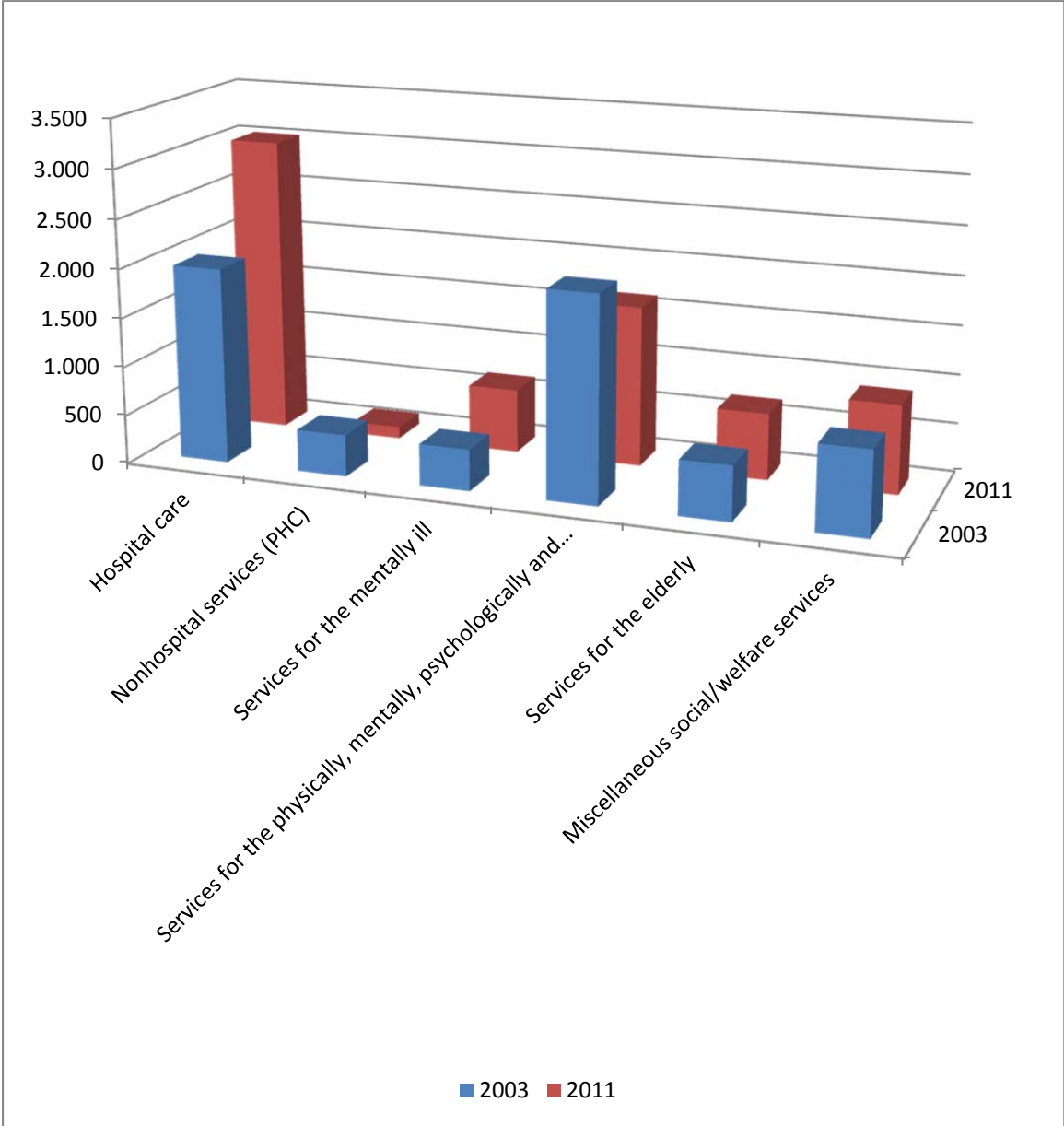
Total 2011: **49.430**



Number of volunteers (2003 – 2011) by category

Total 2003: **6.365**

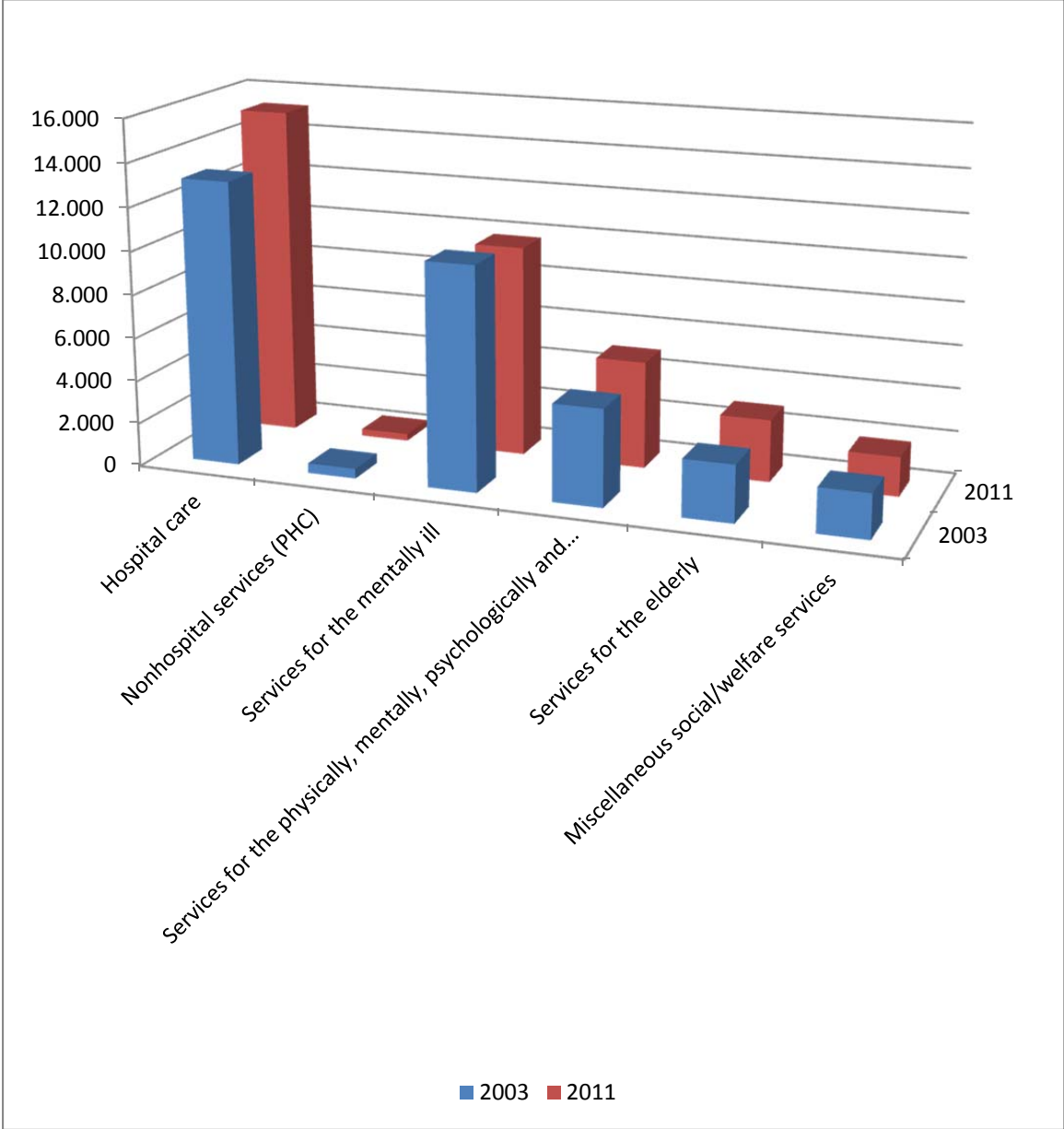
Total 2011: **7.006**



Number of beds (2003 – 2011) by category

Total 2003: **33.156**

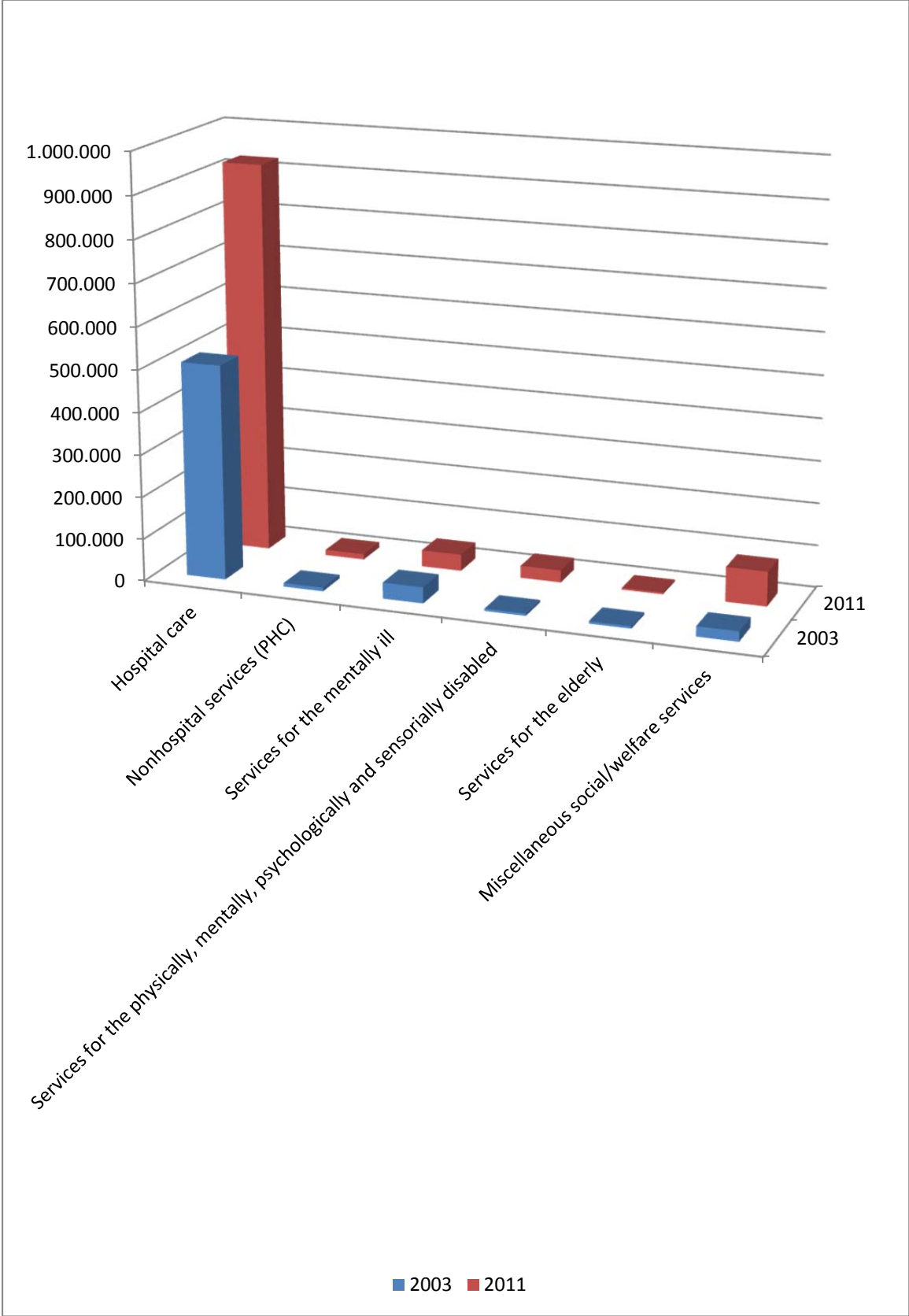
Total 2011: **35.631**



Number of clients (2003 – 2011) by category

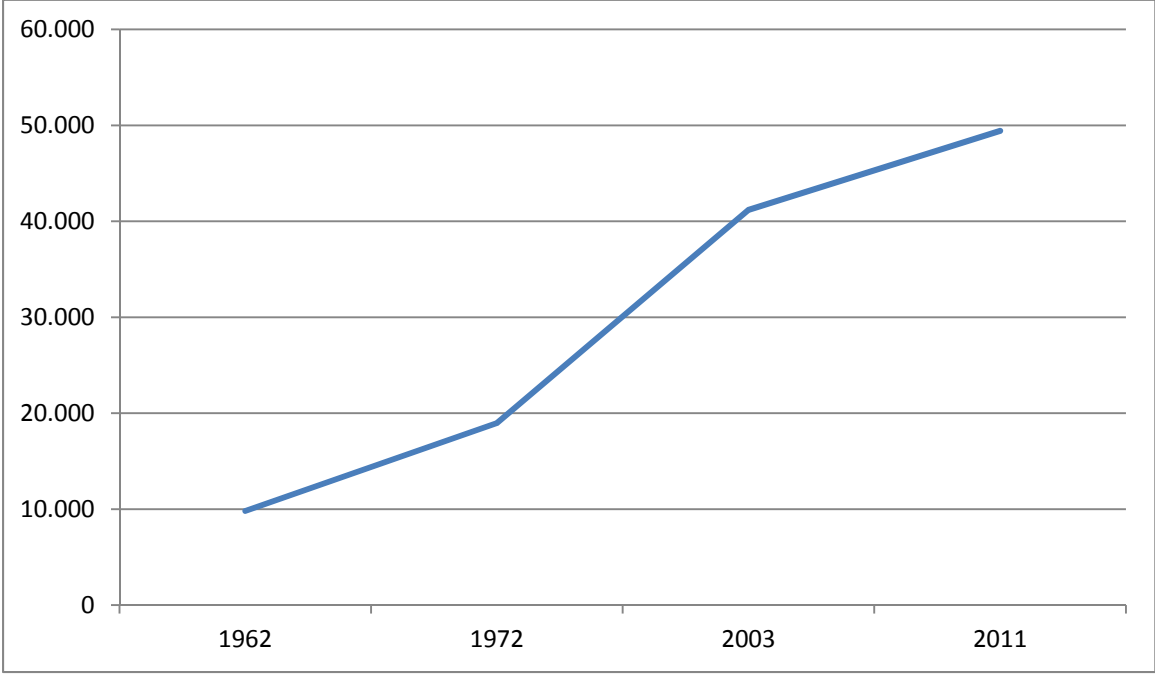
Total 2003: **590.623**

Total 2011: **1.126.389**

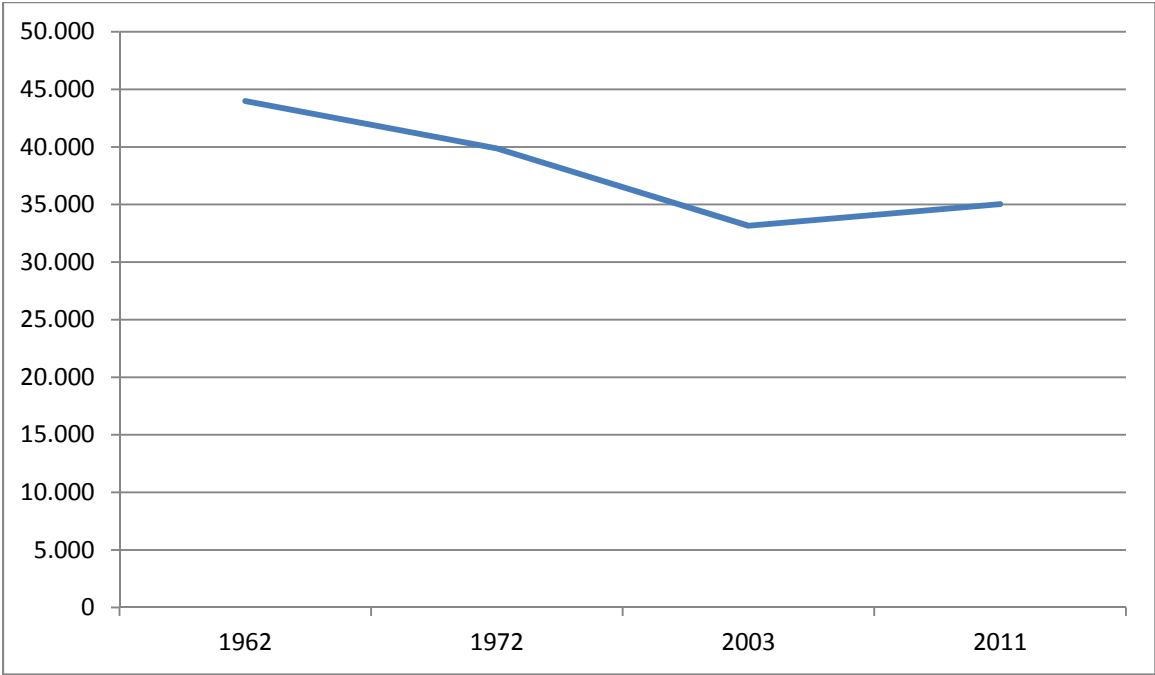


Statistics 2011 – Long-term comparison

Coworkers (long-term comparison)



Beds (long-term comparison)



Clients (long-term comparison)

