

Care Statistics - Comparison of the 2015 data with 2014 and 2003

On 1 May 2017, the General Curia completed its analysis of the Order's care data for the year 2015. The full report with more detailed information and analysis can be found on this website under "2015 Statistics – Report"

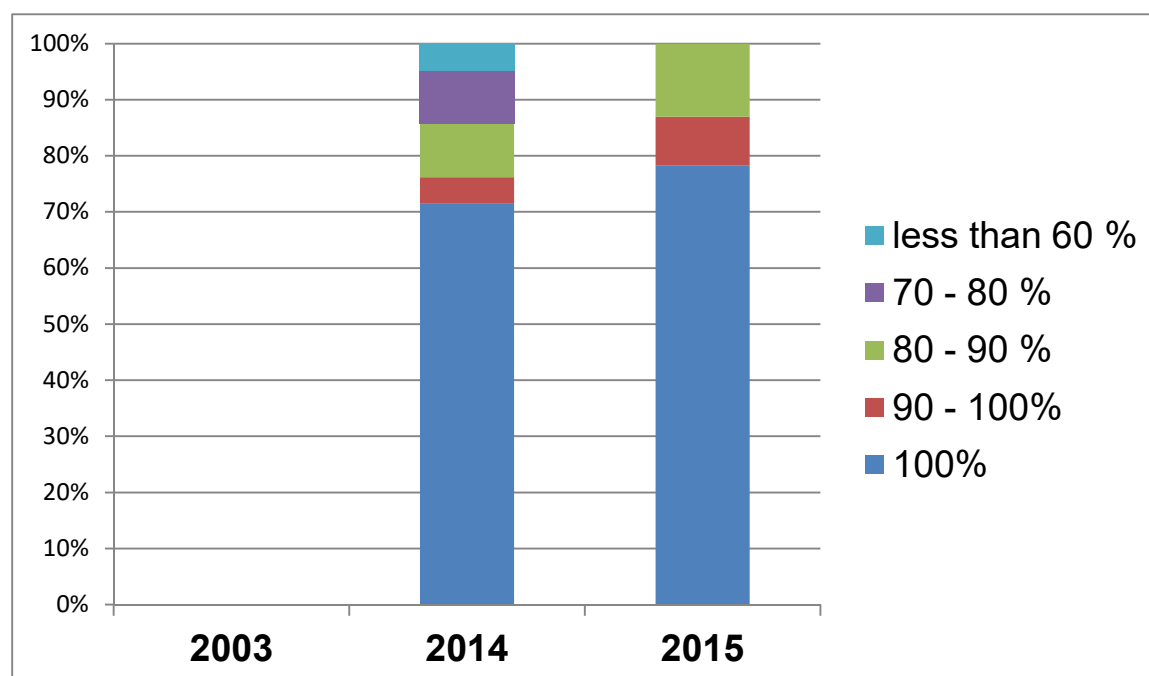
(<http://www.ohsjd.org/Objects/Pagina.asp?ID=4441>). The following graphs provide a general overview of the figures and make short-term comparisons with 2014, and long-term comparisons with 2003.

For the first time, the 2015 questionnaire included data on the care provided by the North American Good Shepherd Province. The huge size of the new Province has greatly increased the figures, particularly in Category "F – Social care and welfare services".

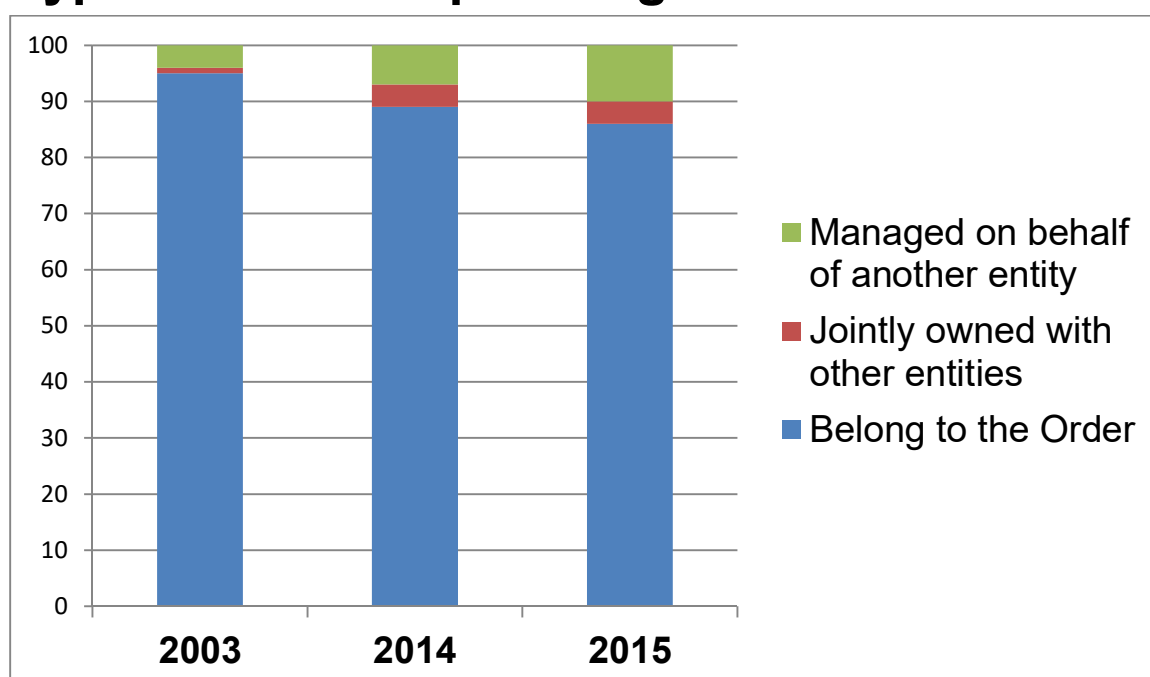
The 2015 figures for the Western European Province are shown under "Western European Saint John of God Services".

% of replies received to the questionnaires

1

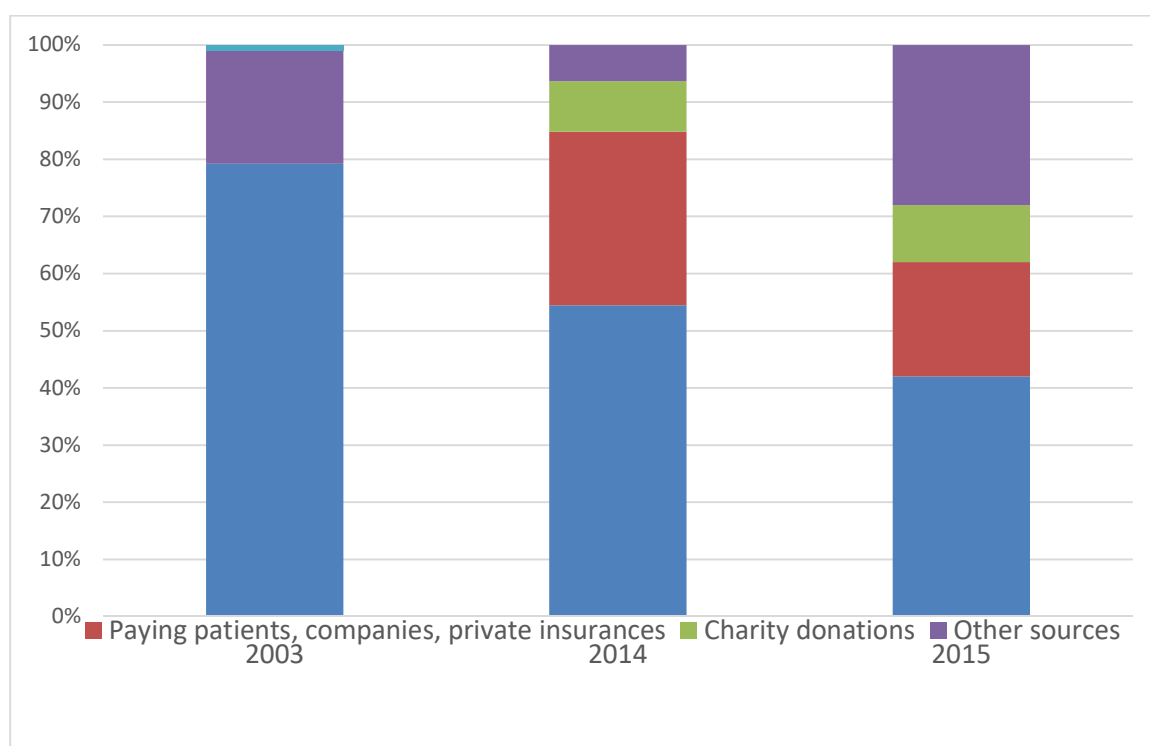


Type of ownership/management of the centres

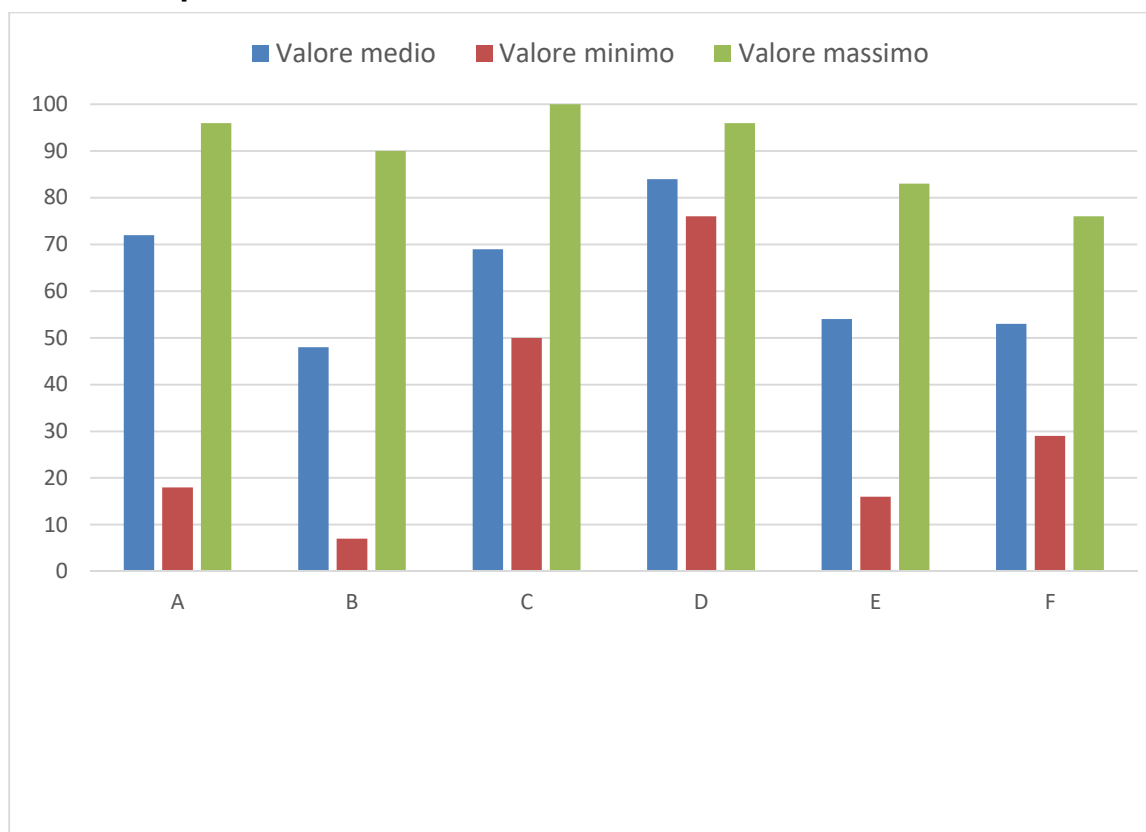


The funding of the Order's centres

2



Percentage of public funding in Europe and North America

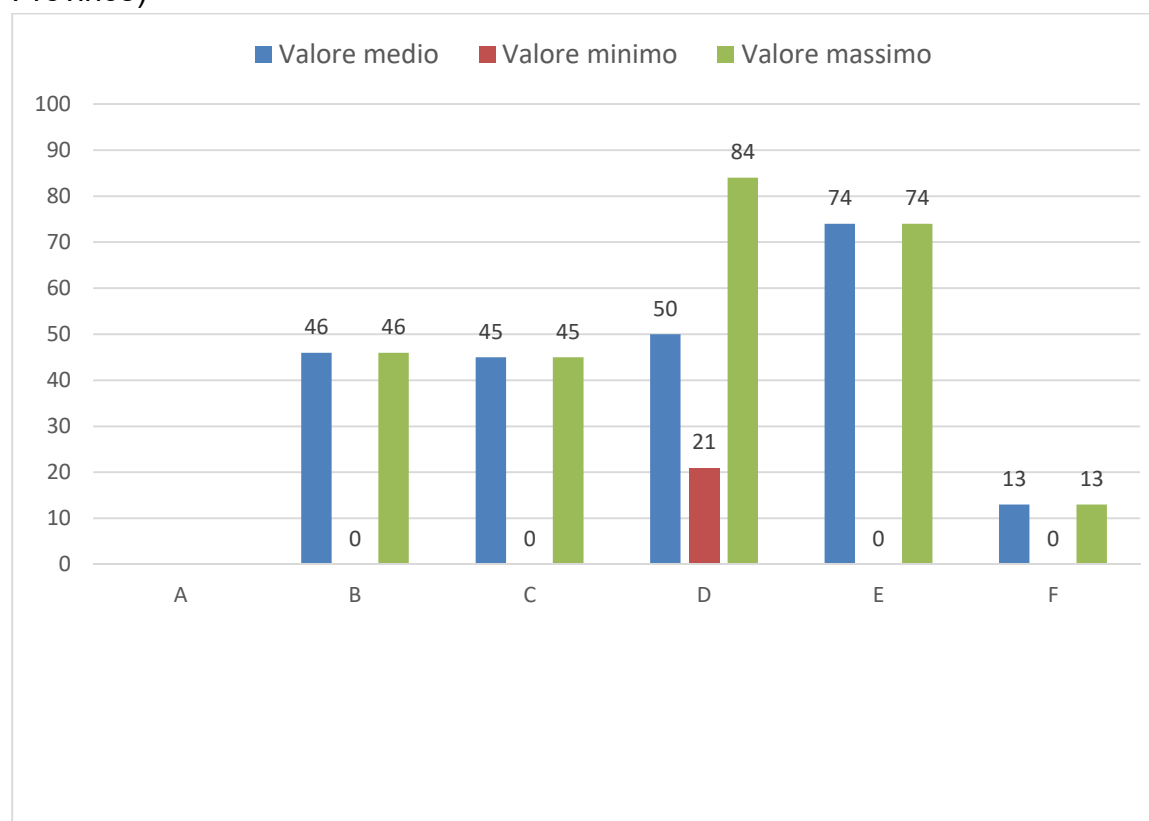


3

A Hospitals
B Non-hospital (primary health care) facilities
C Centres for people with mental disabilities
D Centres for people with physical, mental and sensorial disabilities
E Centres for the elderly
F Miscellaneous social-welfare facilities

Percentage of public funding in Asia

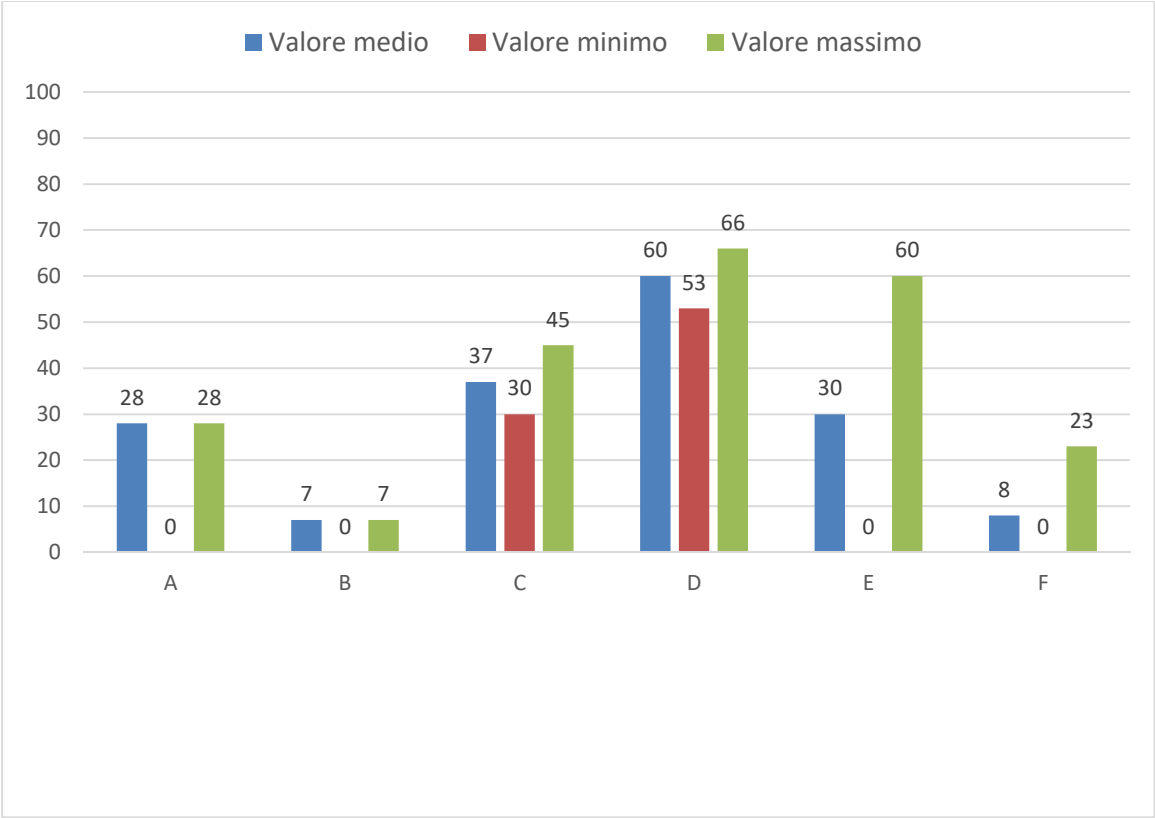
(excluding Philippines, since the data are included in the figures of the Romana Province and Timor Est since the data are included in the figures of the Portuguese Province)



A Hospitals
B Non-hospital (primary health care) facilities
C Centres for people with mental disabilities
D Centres for people with physical, mental and sensorial disabilities
E Centres for the elderly
F Miscellaneous social-welfare facilities

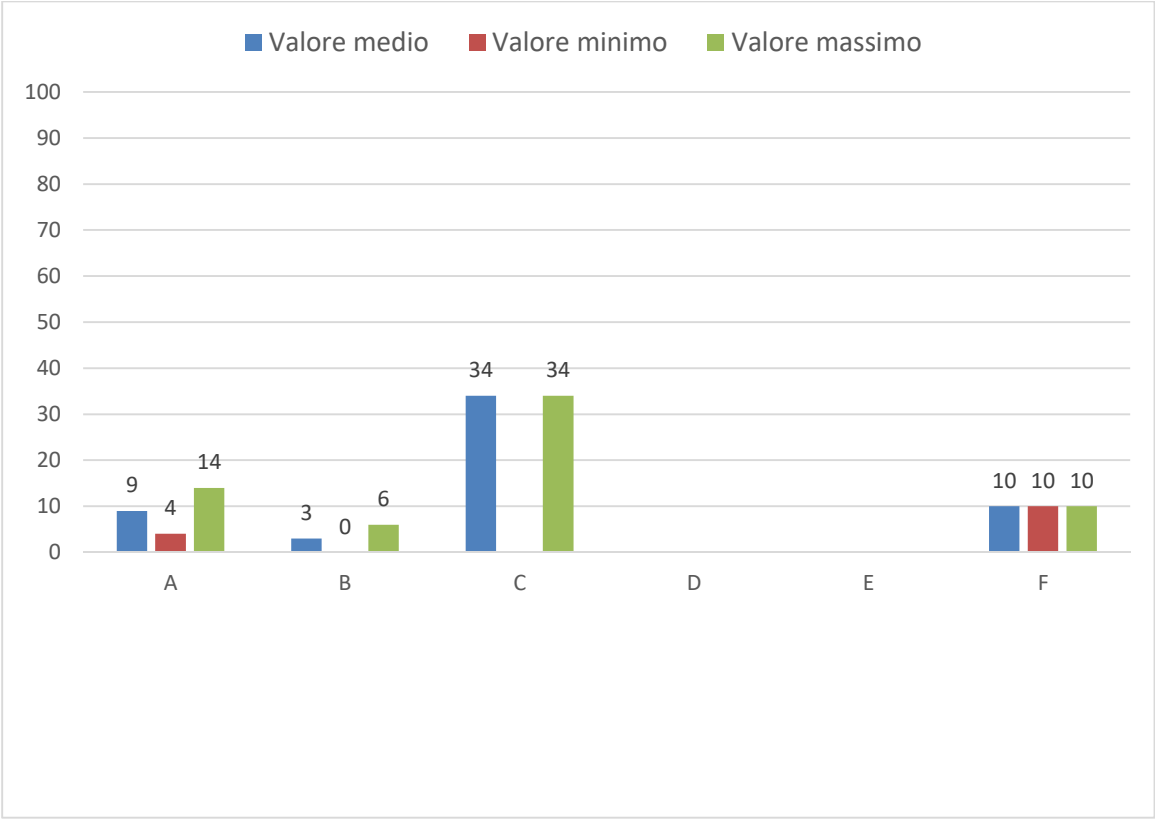
Percentage of public funding in Central and South America

(excluding Brazil, since the data are included in the figures of the Portuguese Province).



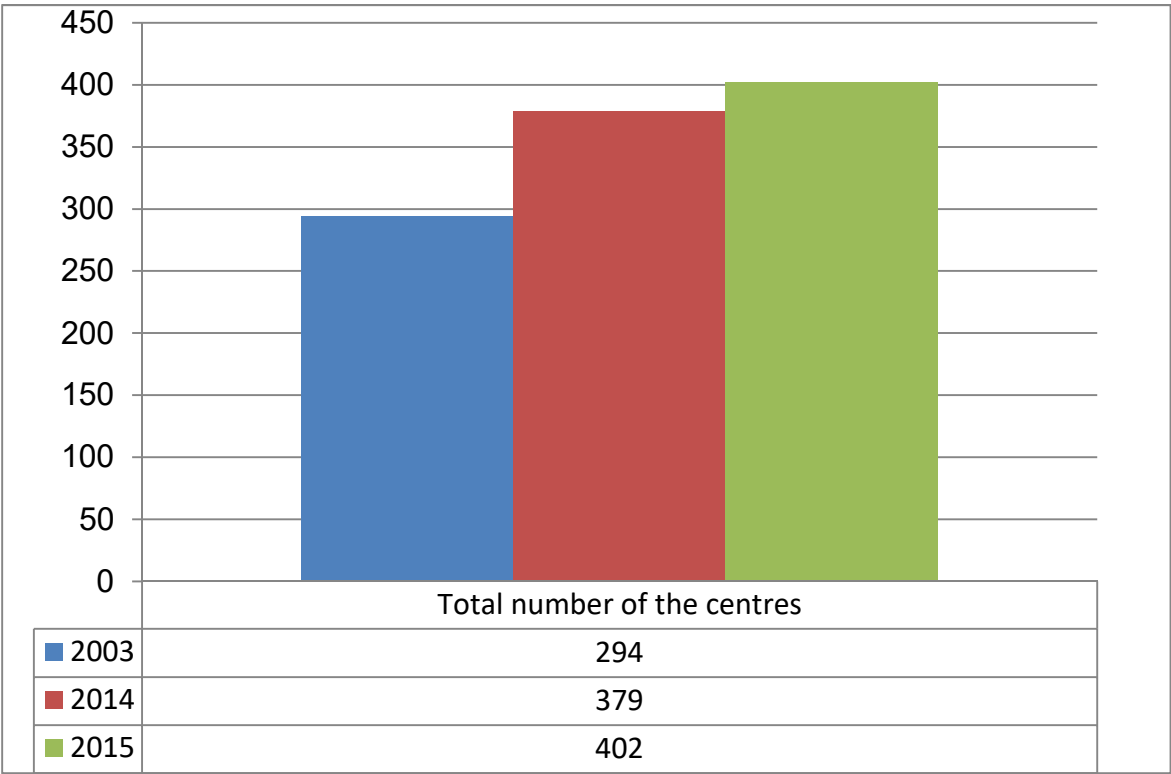
A	Hospitals
B	Non-hospital (primary health care) facilities
C	Centres for people with mental disabilities
D	Centres for people with physical, mental and sensorial disabilities
E	Centres for the elderly
F	Miscellaneous social-welfare facilities

Percentage of public funding in Africa



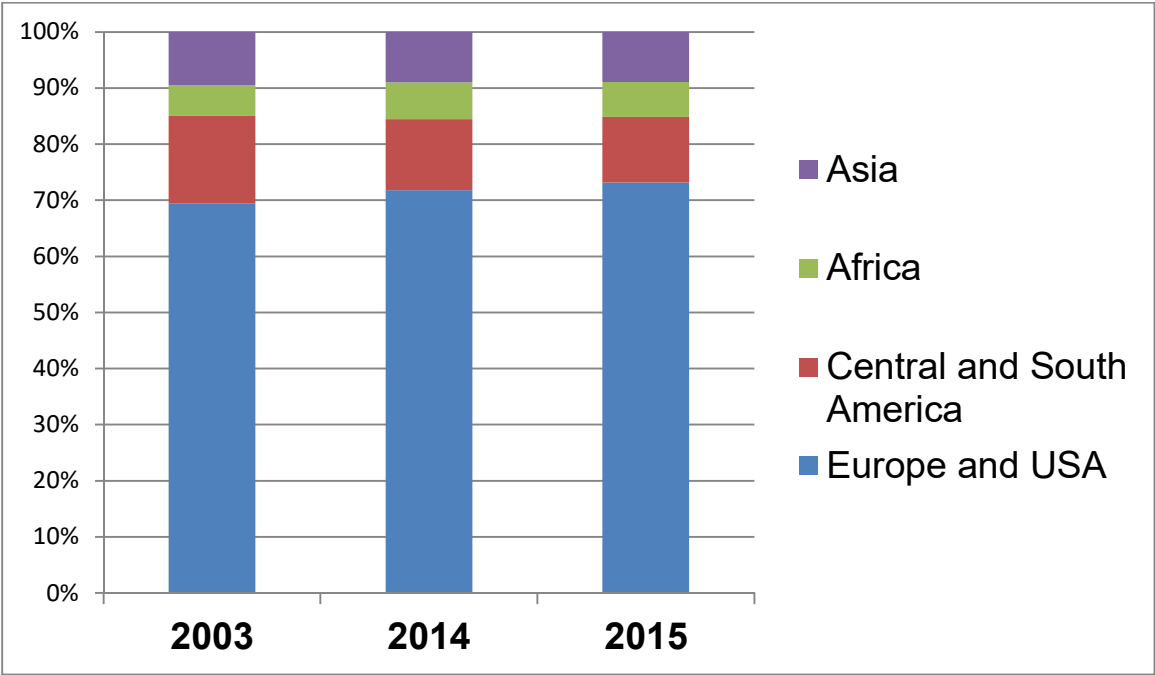
A Hospitals
B Non-hospital (primary health care) facilities
C Centres for people with mental disabilities
D Centres for people with physical, mental and sensorial disabilities
E Centres for the elderly
F Miscellaneous social-welfare facilities

Total number of the centres

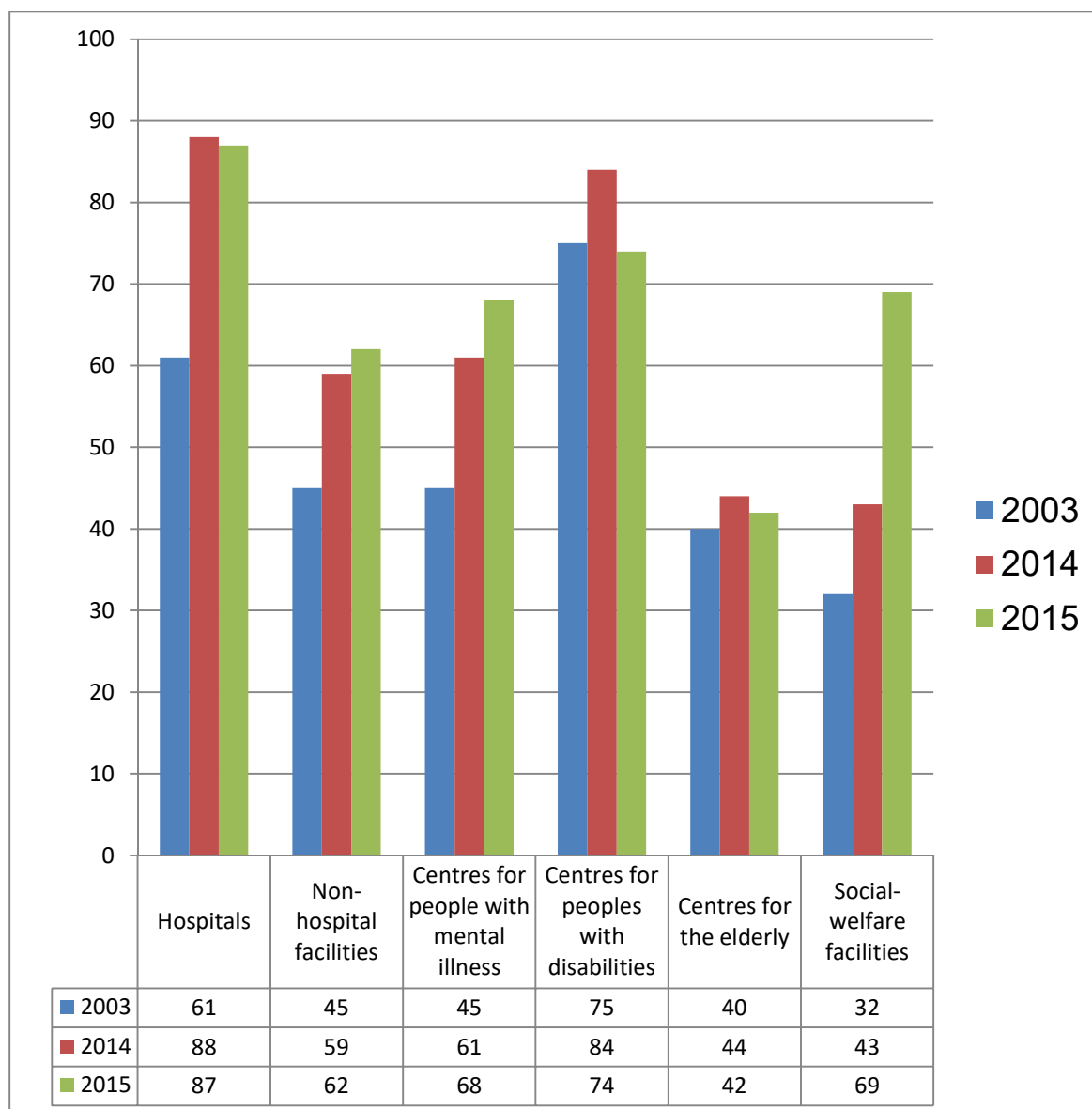


7

The regional breakdown of the Centres

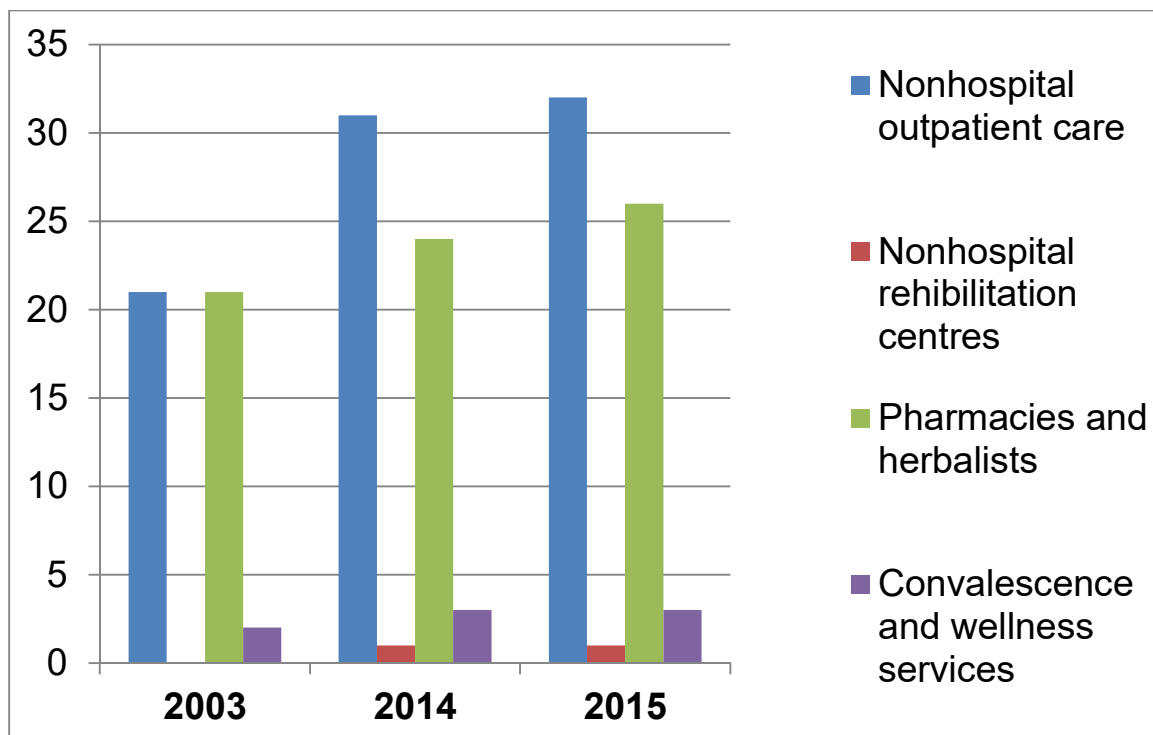
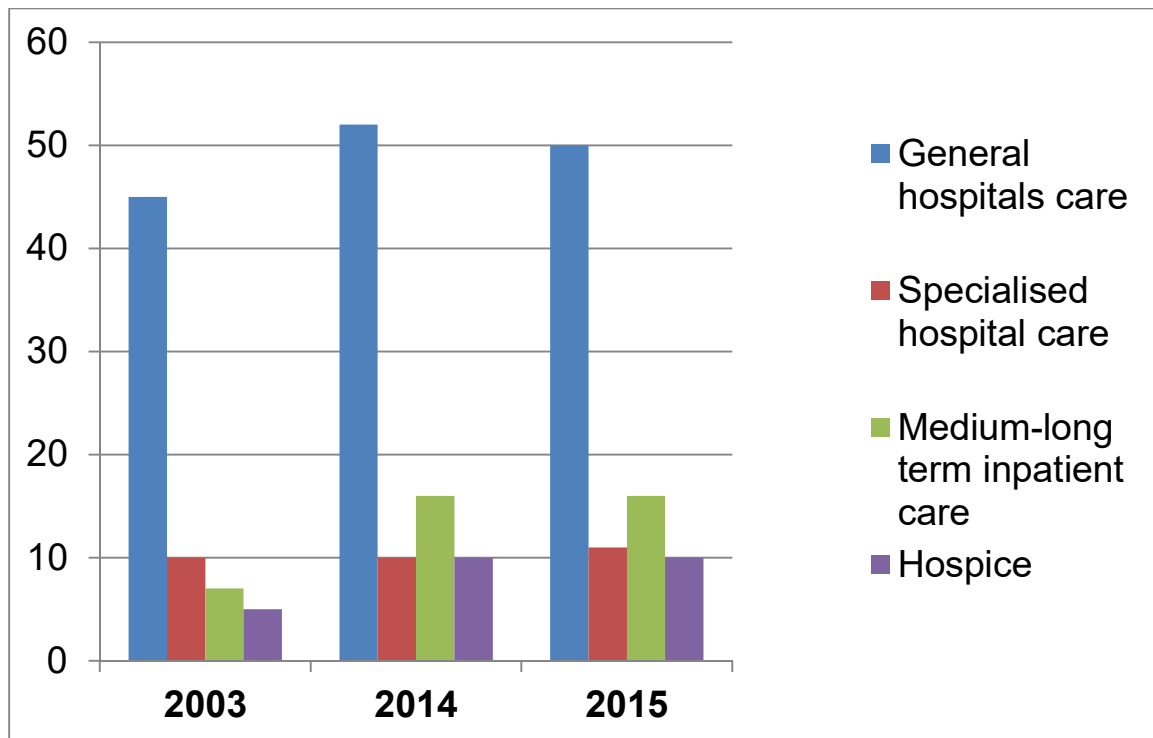


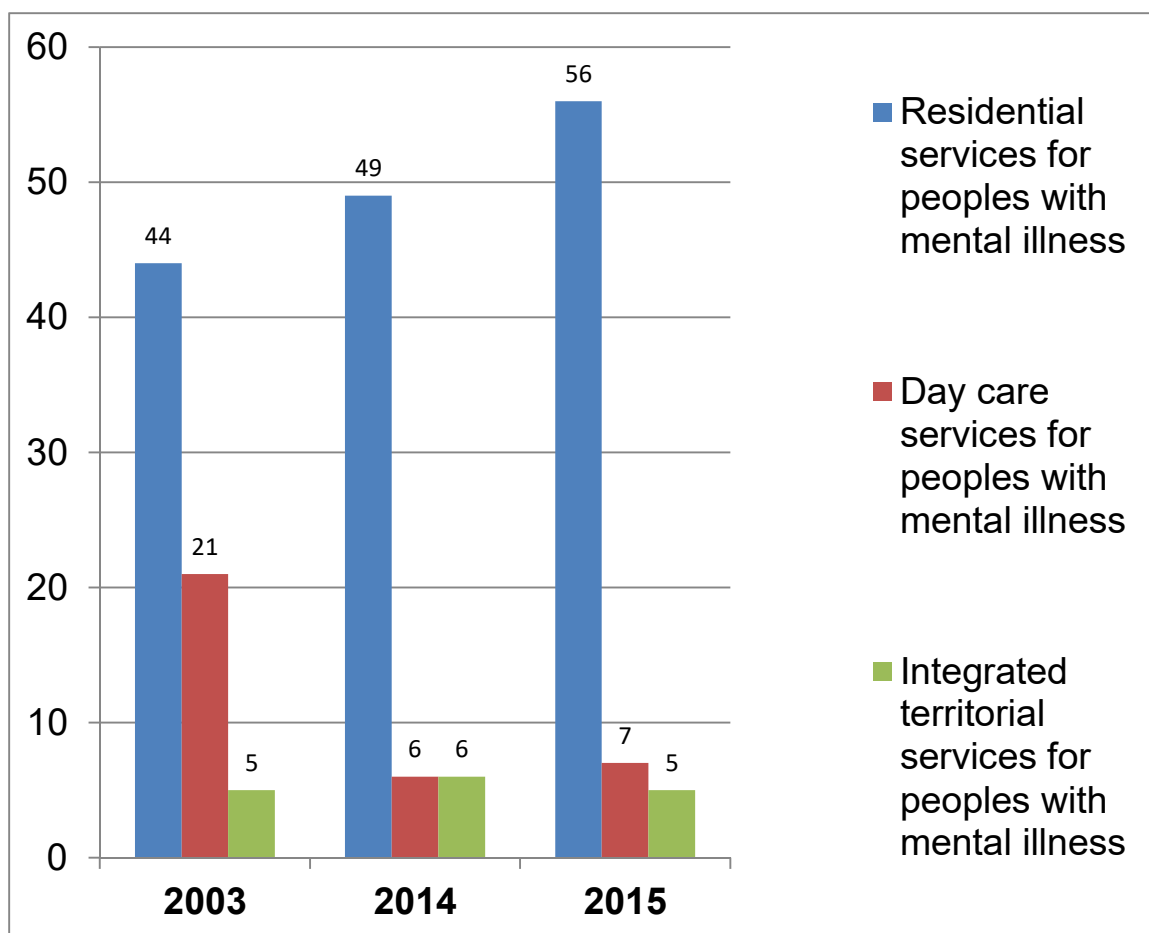
Number of centres by care category



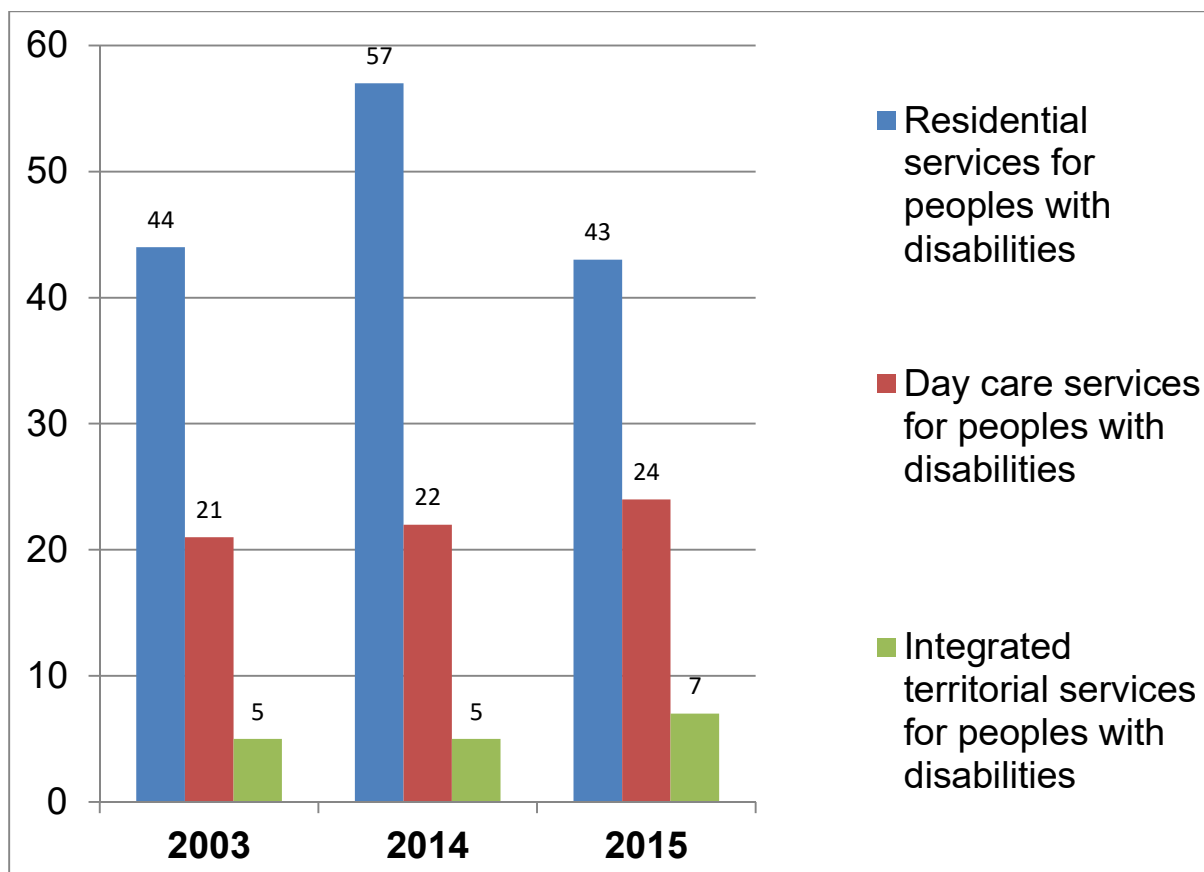
As explained in the introduction, the increase in the number of centres belonging to category “F” – Social care-welfare services, is due to the fact that the figures on the North American Good Shepherd Province were included in the 2015 survey for the first time.

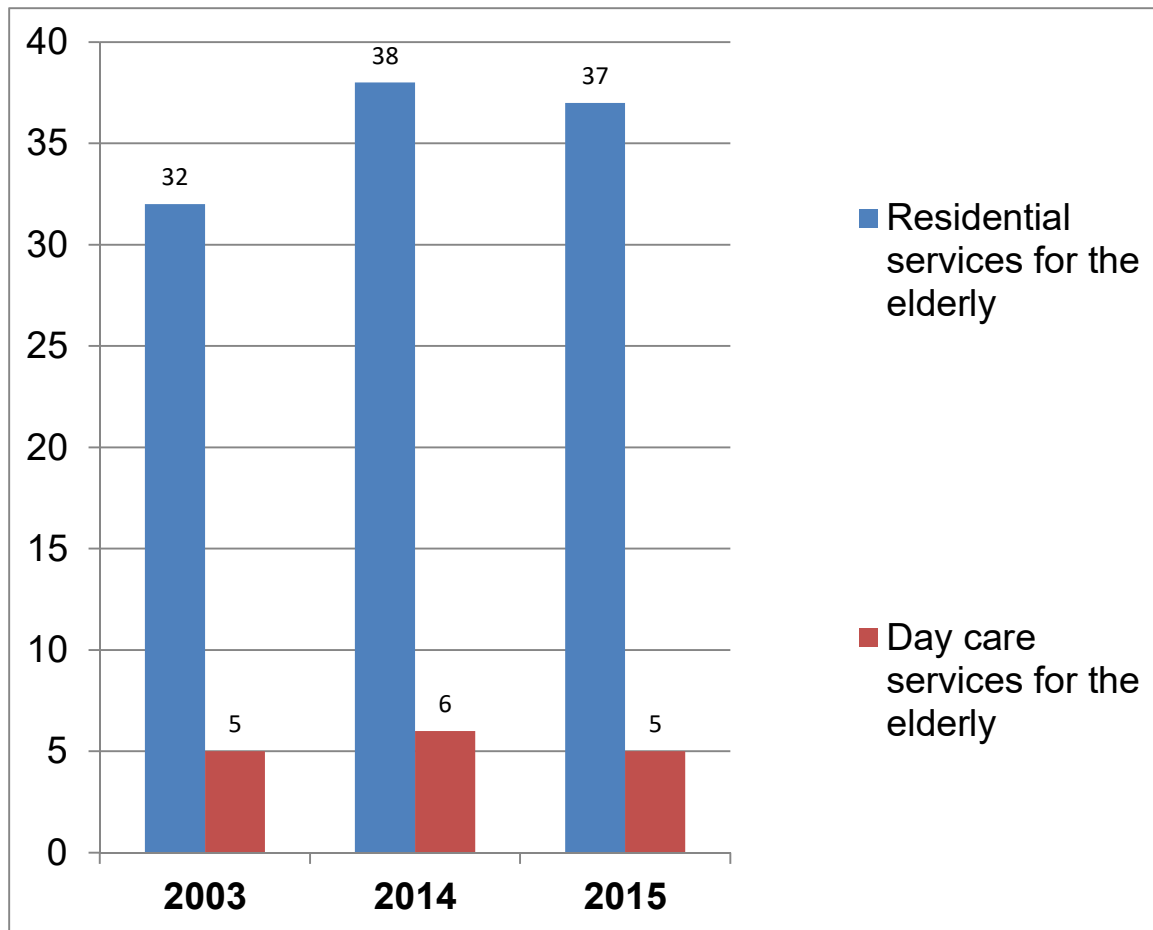
Number of centres by type

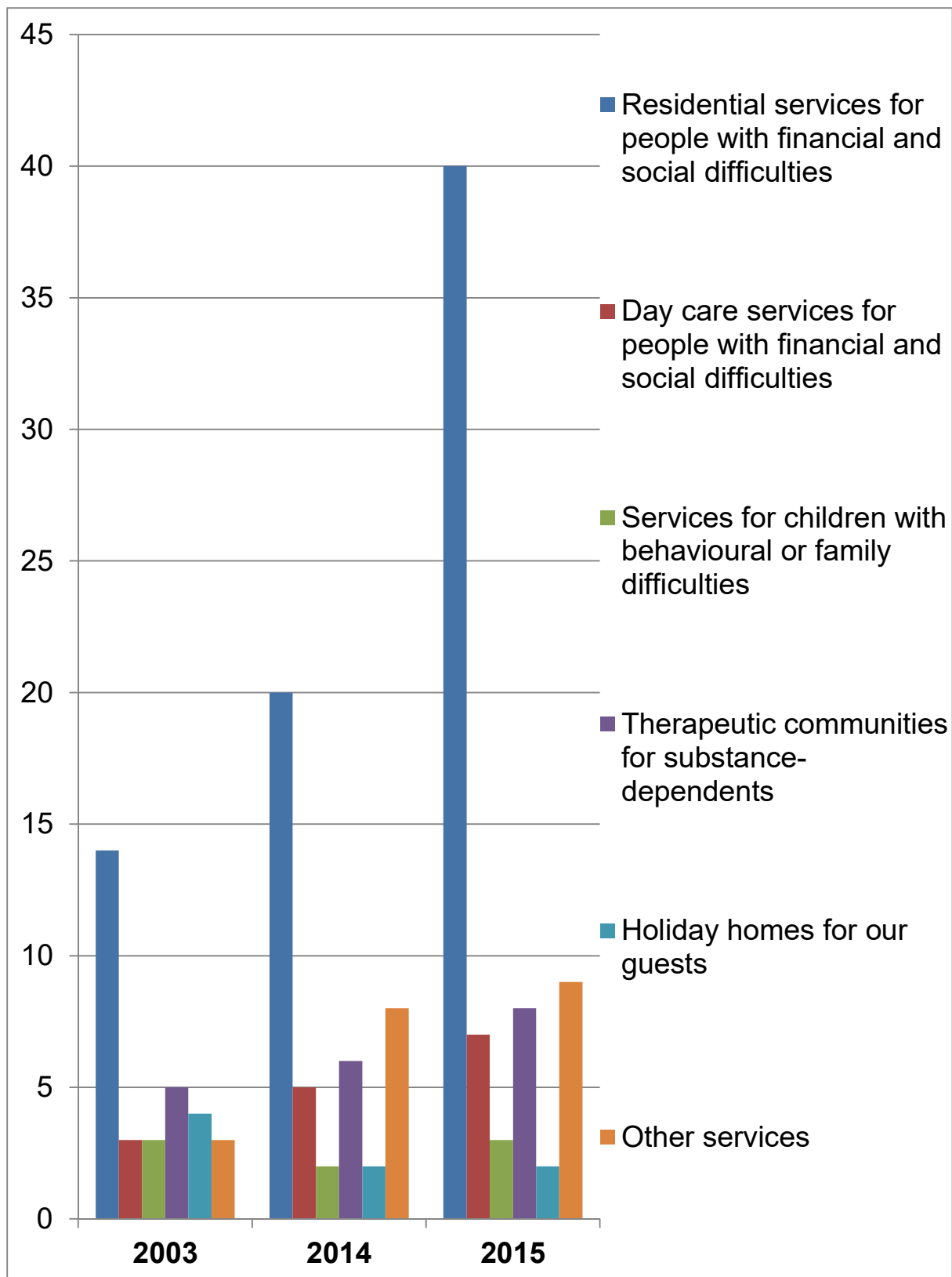




10



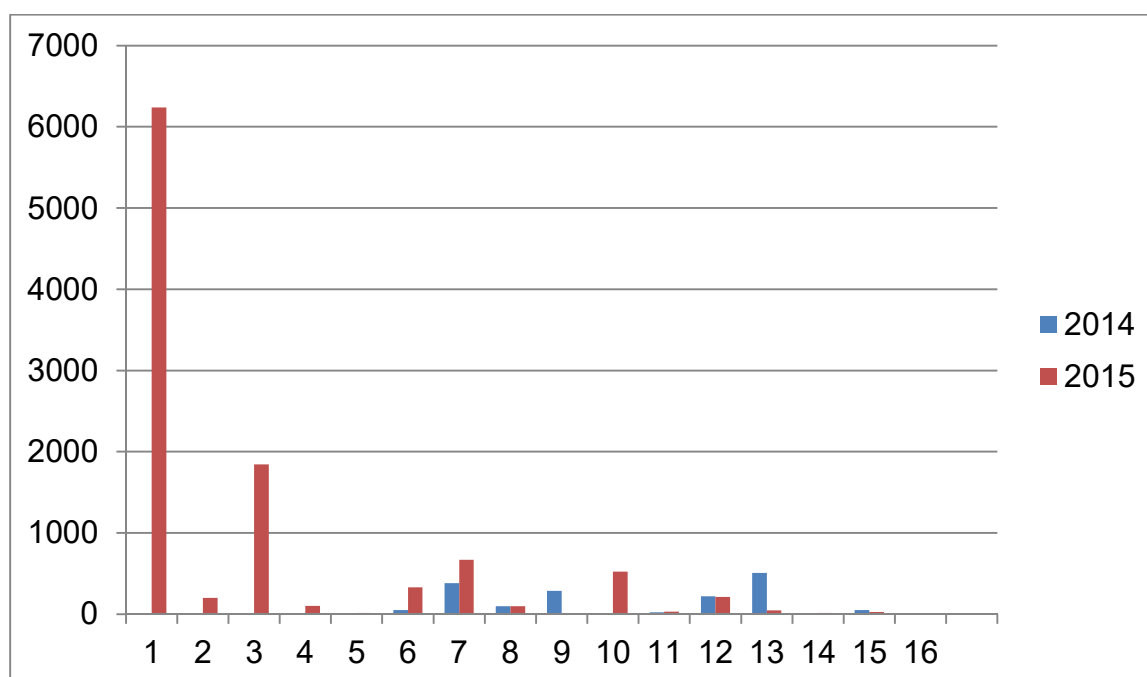




As explained in the introduction, the increase in the number of centres belonging to category “F” – Social care-welfare services, is due to the fact that the figures on the North American Good Shepherd Province were included in the 2015 survey for the first time.

Home care guests (including hospitals)

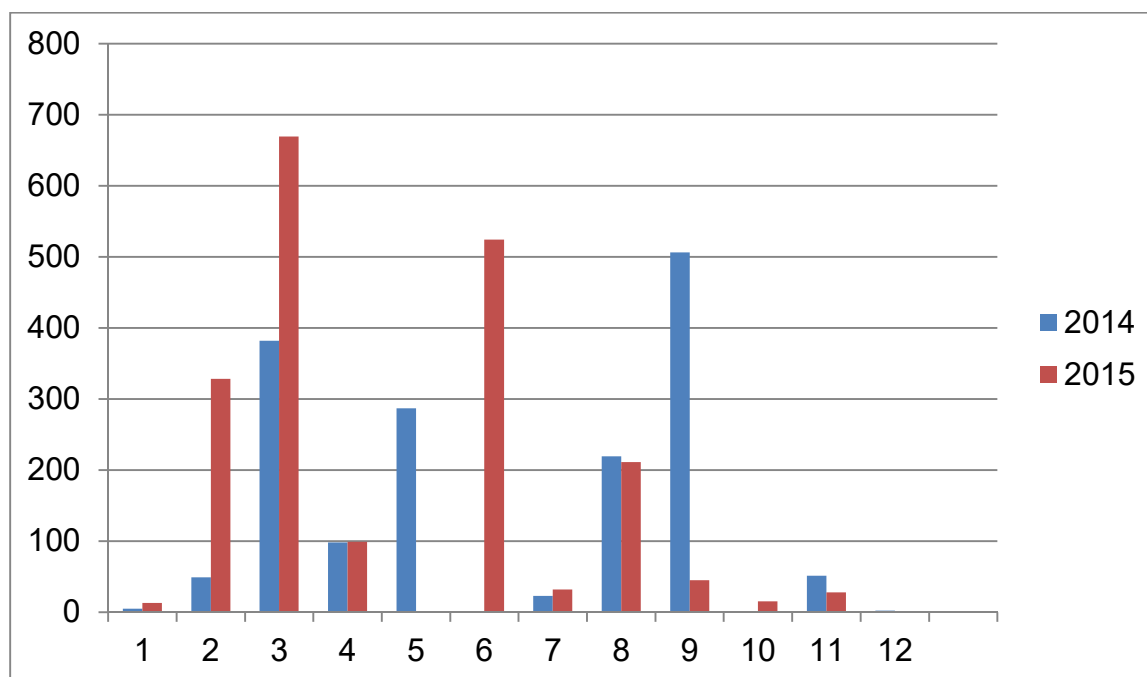
These figures were gathered for the first time in 2014 and 2015



1 - General hospital care
2 - Specialised hospital care
3 -Medium/long-term inpatient care
4 - Hospice care
5 - Nonhospital outpatient care
6 - Residential or residential/daycare services for people with mental illness
7 - Day care services for people with mental illness
8 - Integrated territorial services for people with mental illness
9 - Residential or residential/daycare services for people with disabilities
10 - Day care services for people with disabilities
11 - Integrated territorial services for people with disabilities
12 - Residential or residential/daycare services for the elderly
13 - Day care services for the elderly
14 - Residential or residential/daycare services for people with financial and social difficulties
15 - Day care services for people in financial and social difficulties
16 - Services for children with behavioural or family difficulties

Home care guests (excluding hospitals)

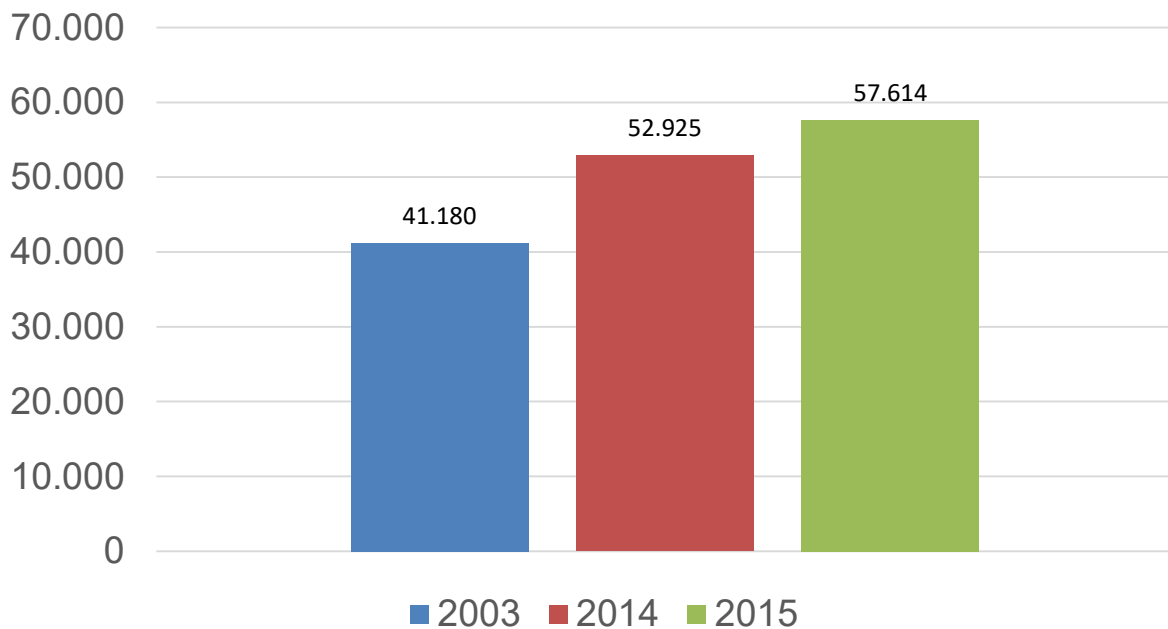
These figures were gathered for the first time in 2014 and 2015



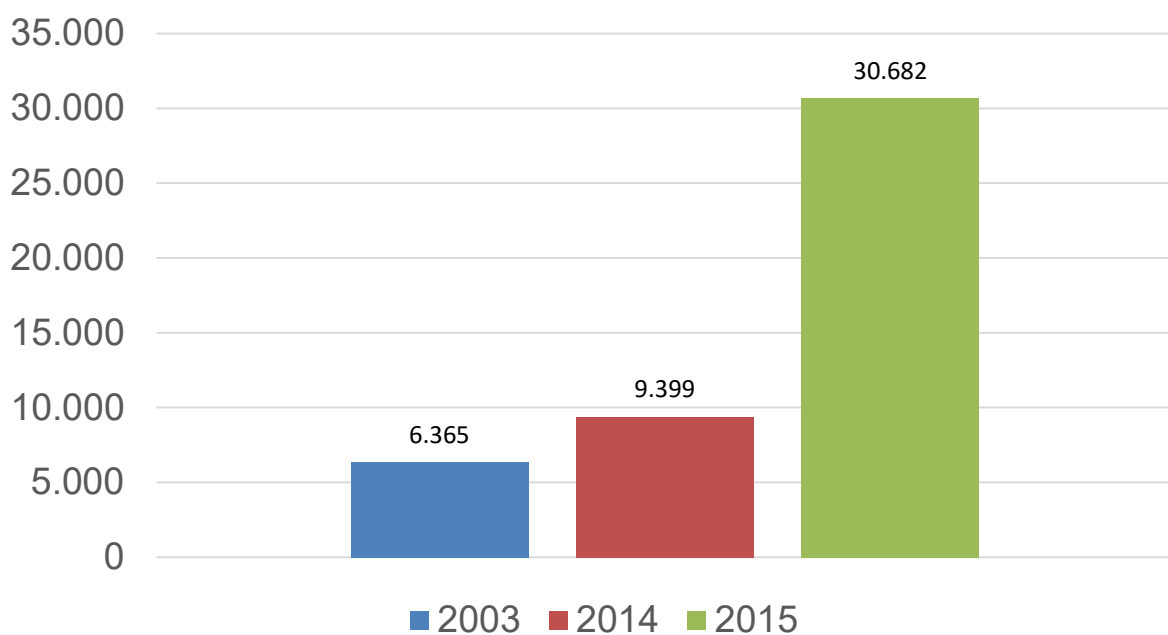
14

1 - Nonhospital outpatient care
2 - Residential or residential/daycare services for people with mental illness
3 - Day care services for people with mental illness
4 - Integrated territorial services for people with mental illness
5 Residential or residential/daycare services for people with disabilities
6 - Day care services for people with disabilities
7 - Integrated territorial services for people with disabilities
8 - Residential or residential/daycare services for the elderly
9 - Day care services for the elderly
10 - Residential or residential/daycare services for people with financial and social difficulties
11 - Day care services for people in financial and social difficulties
12 - Services for children with behavioural or family difficulties

The Hospitaller Family of Saint John of God Number of personnel



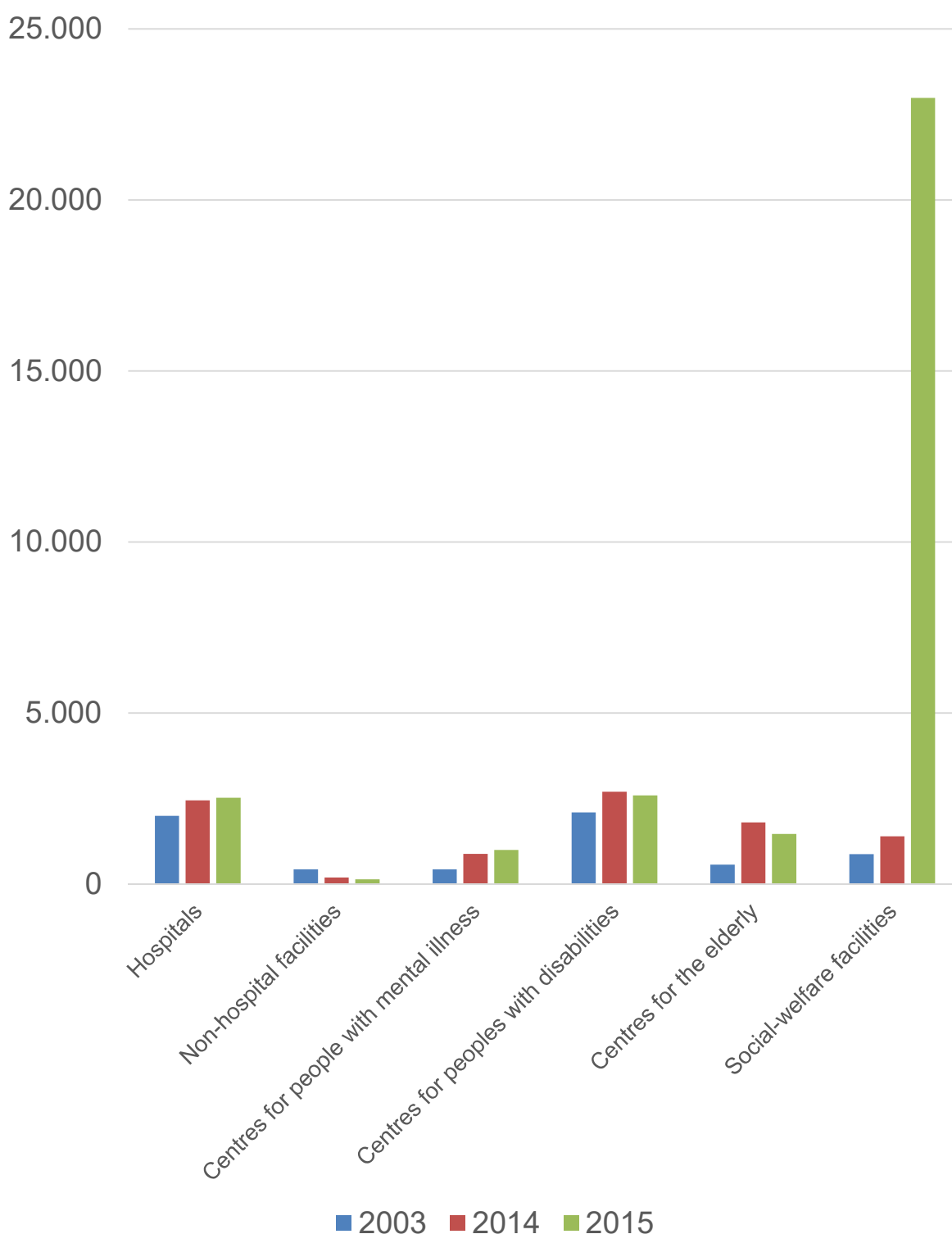
The Hospitaller Family of Saint John of God Number of volunteers



As explained in the introduction, the increase in the number of volunteers is due to the fact that the figures on the North American Good Shepherd Province were included in the 2015 survey for the first time.

The Hospitaller Family of Saint John of God

Volunteers by care category

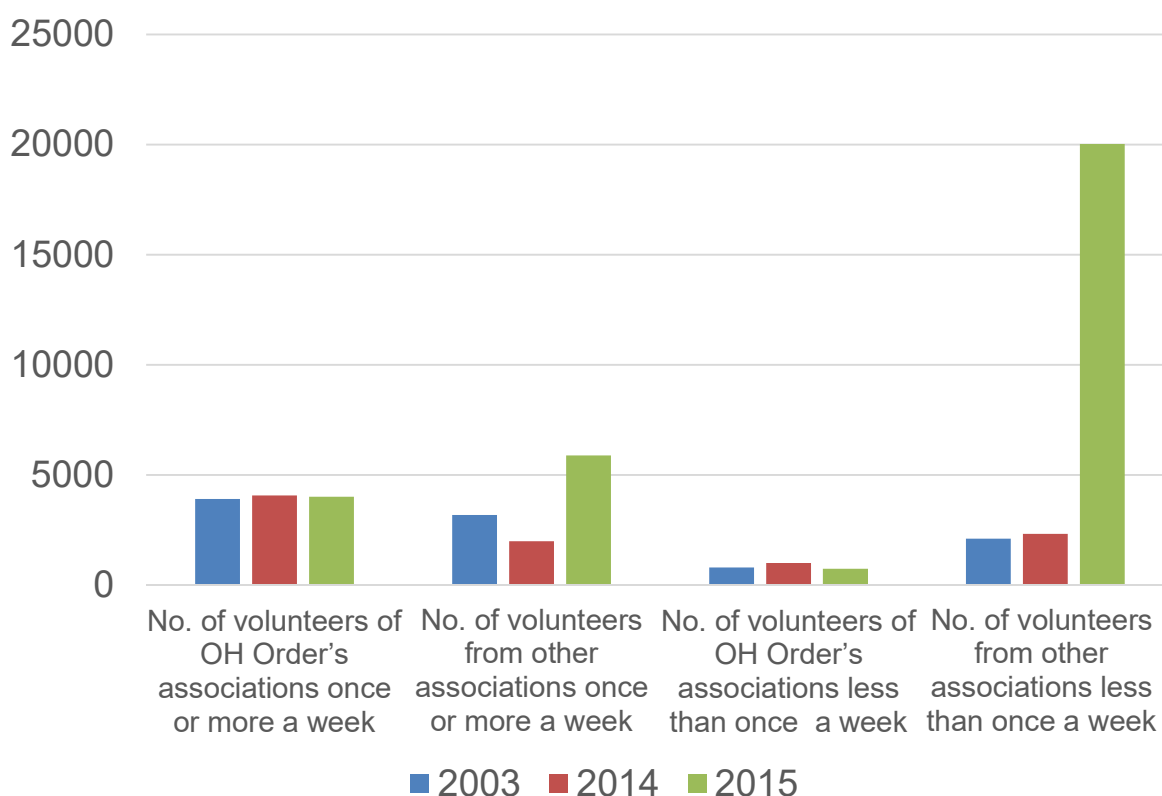


16

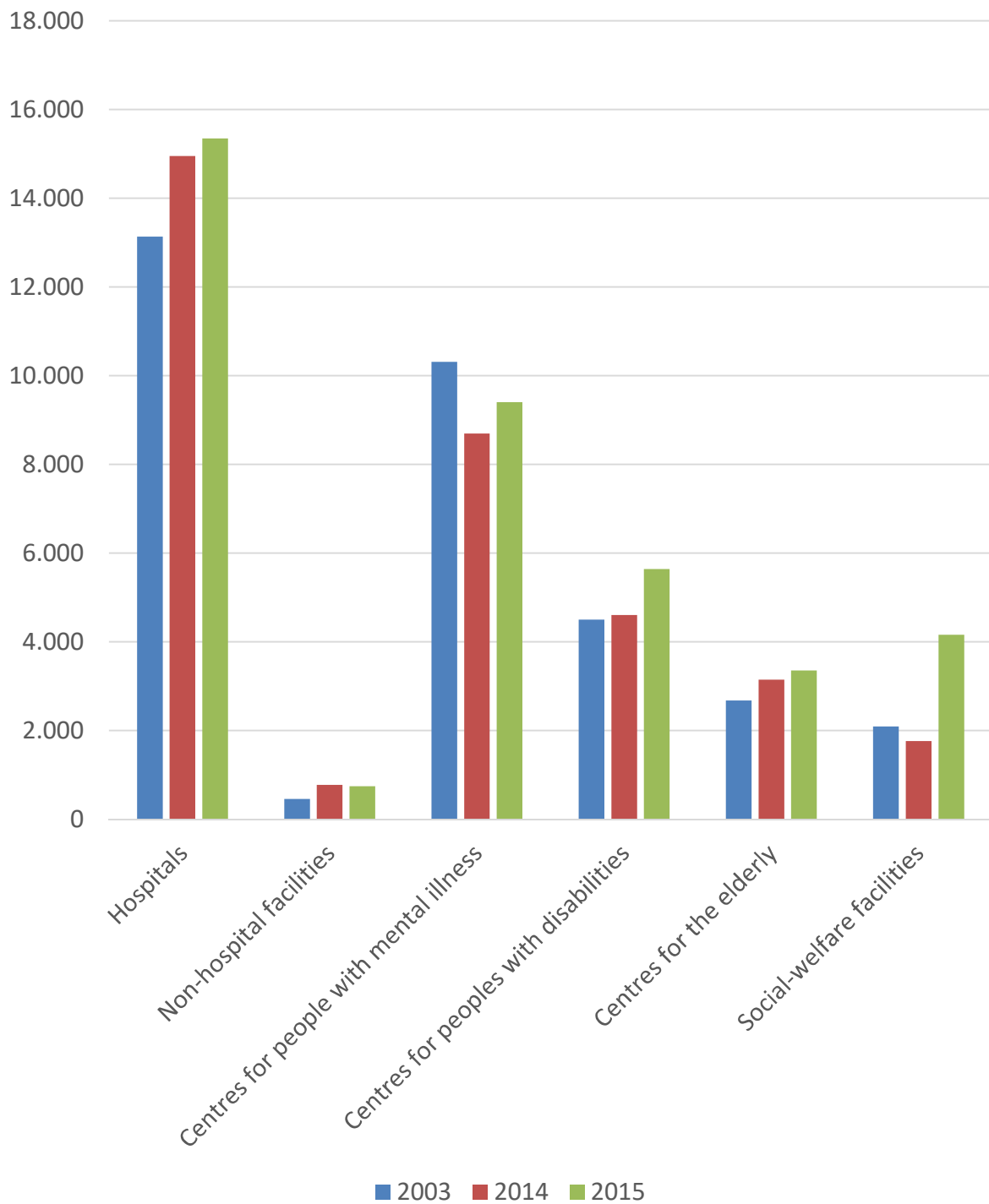
As explained in the introduction, the increase in the number of volunteers is due to to the fact that the figures on the North American Good Shepherd Province were included in the 2015 survey for the first time.

The Hospitaller Family of Saint John of God

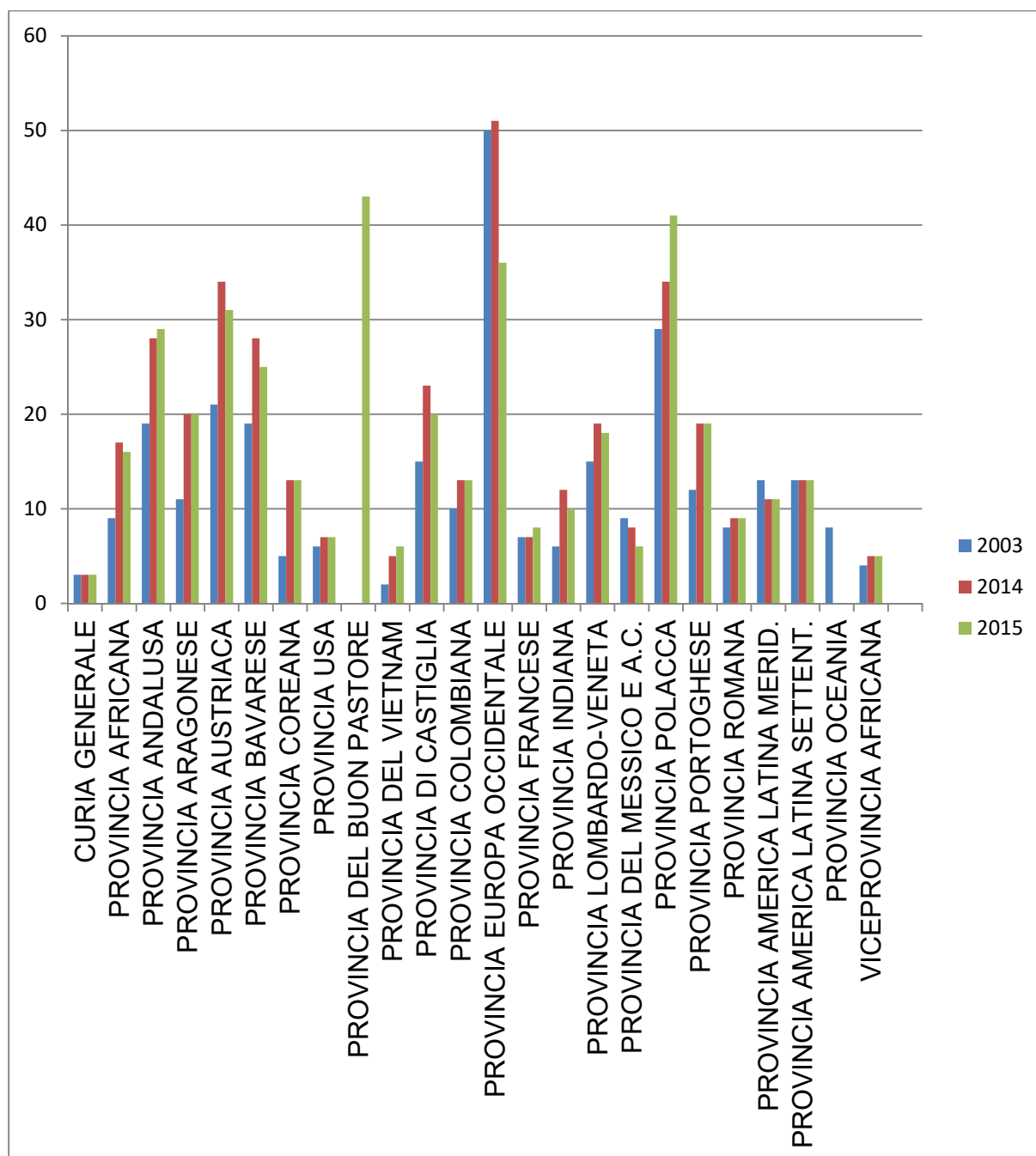
Volunteers: frequency of presence



Number of beds by care category

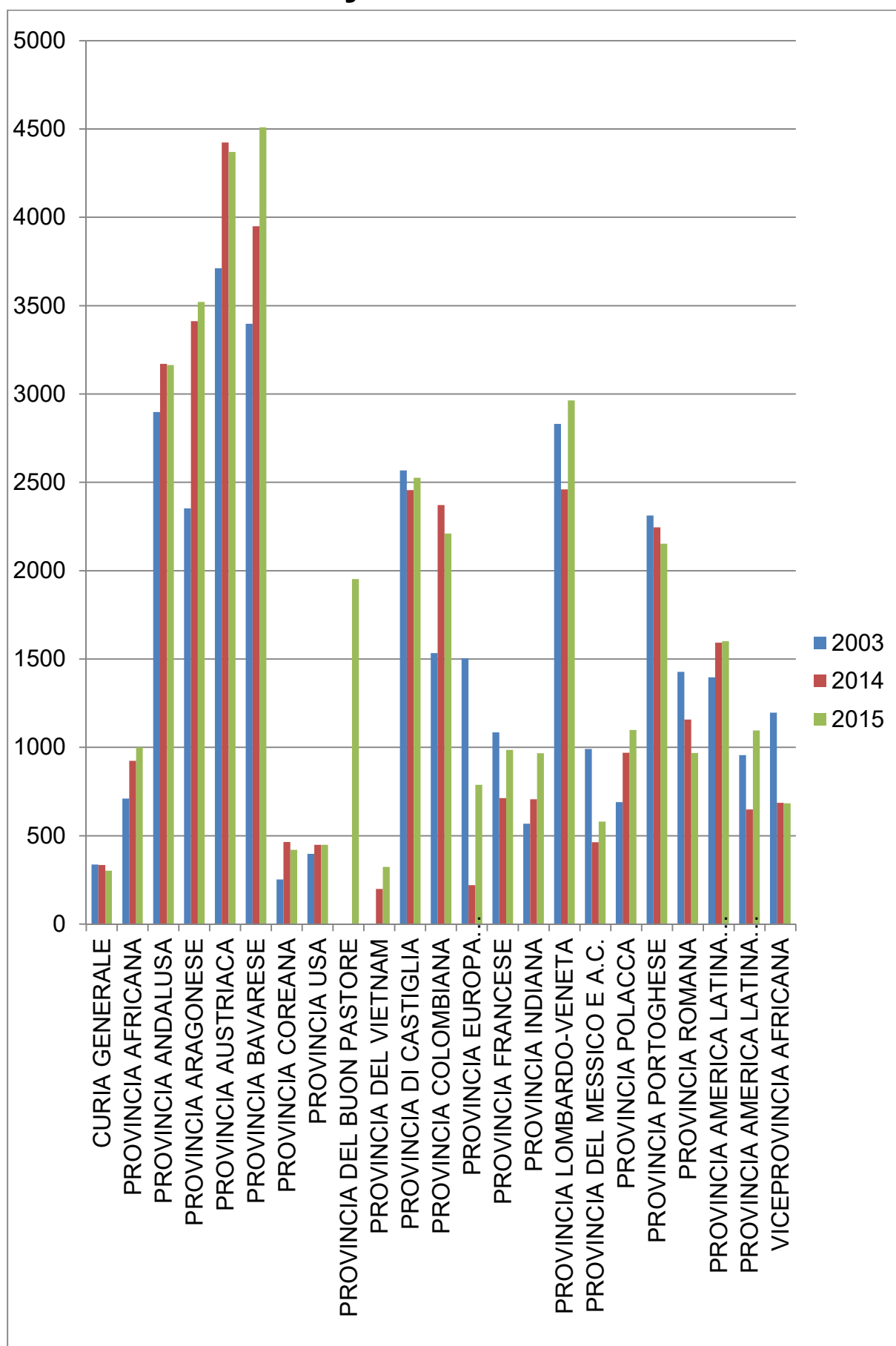


Number of centres by Province



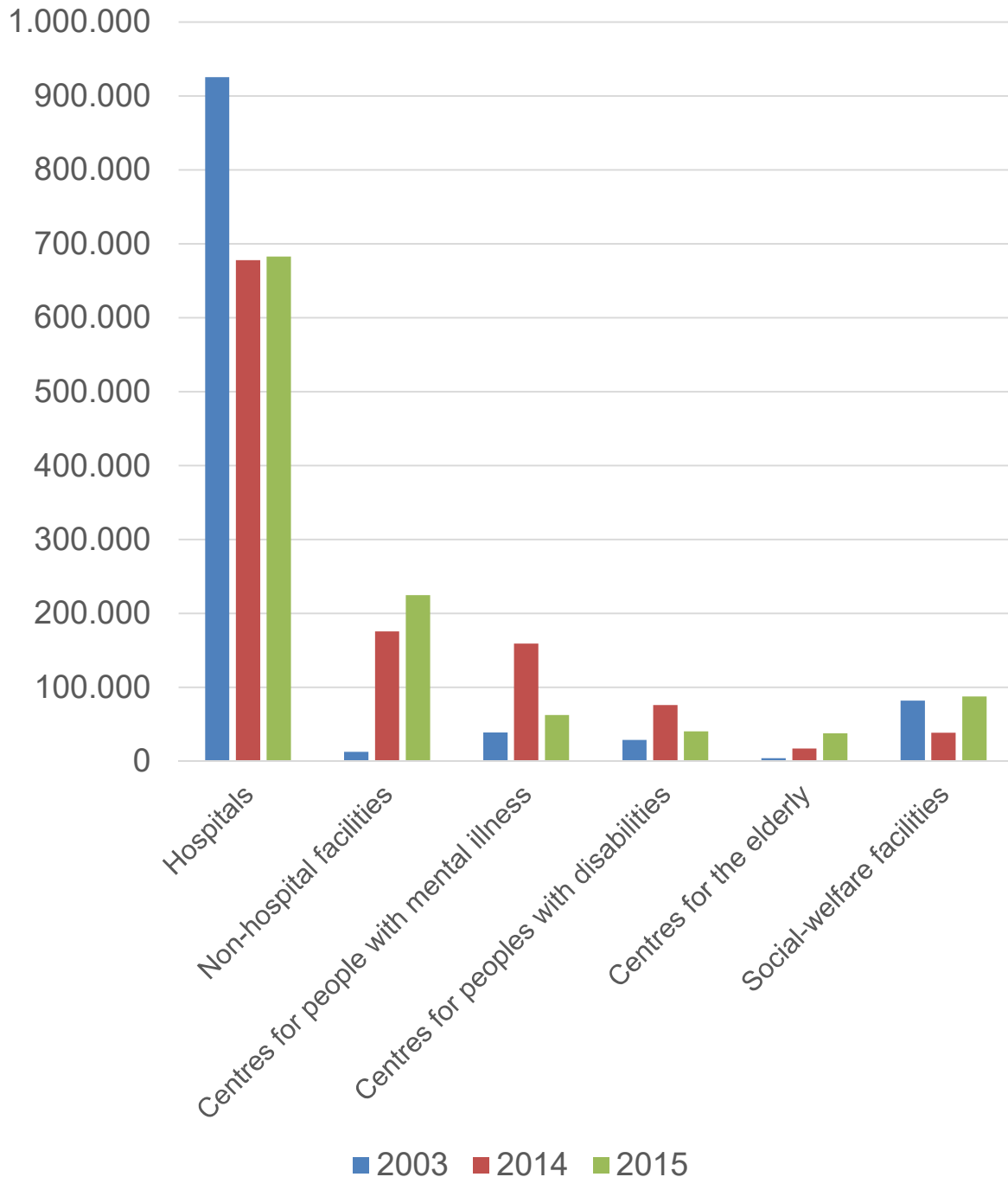
With regard to the number of centres per Province, bear in mind that, this year, the centres belonging to the North American Good Shepherd Province have been included, and that the centres belonging to “Western European Saint John of God Services” (previously the “Western European Province”) currently being reorganised, have been grouped together into 36 from the previous 5 centres.

Number of beds by Province

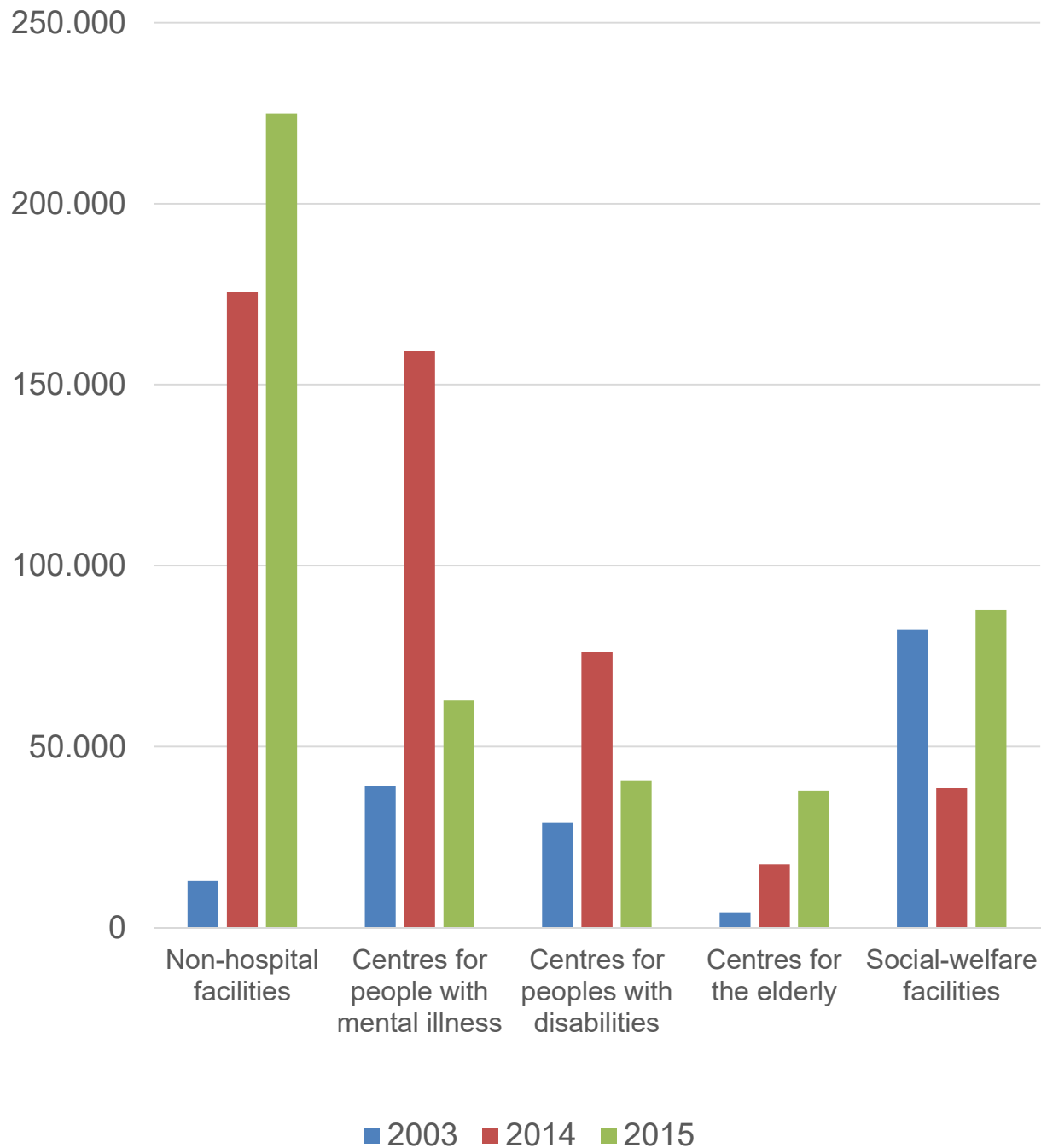


Number of admissions by care category

(Excluding admissions to day hospitals, take care centres and day surgeries; see the last pages)

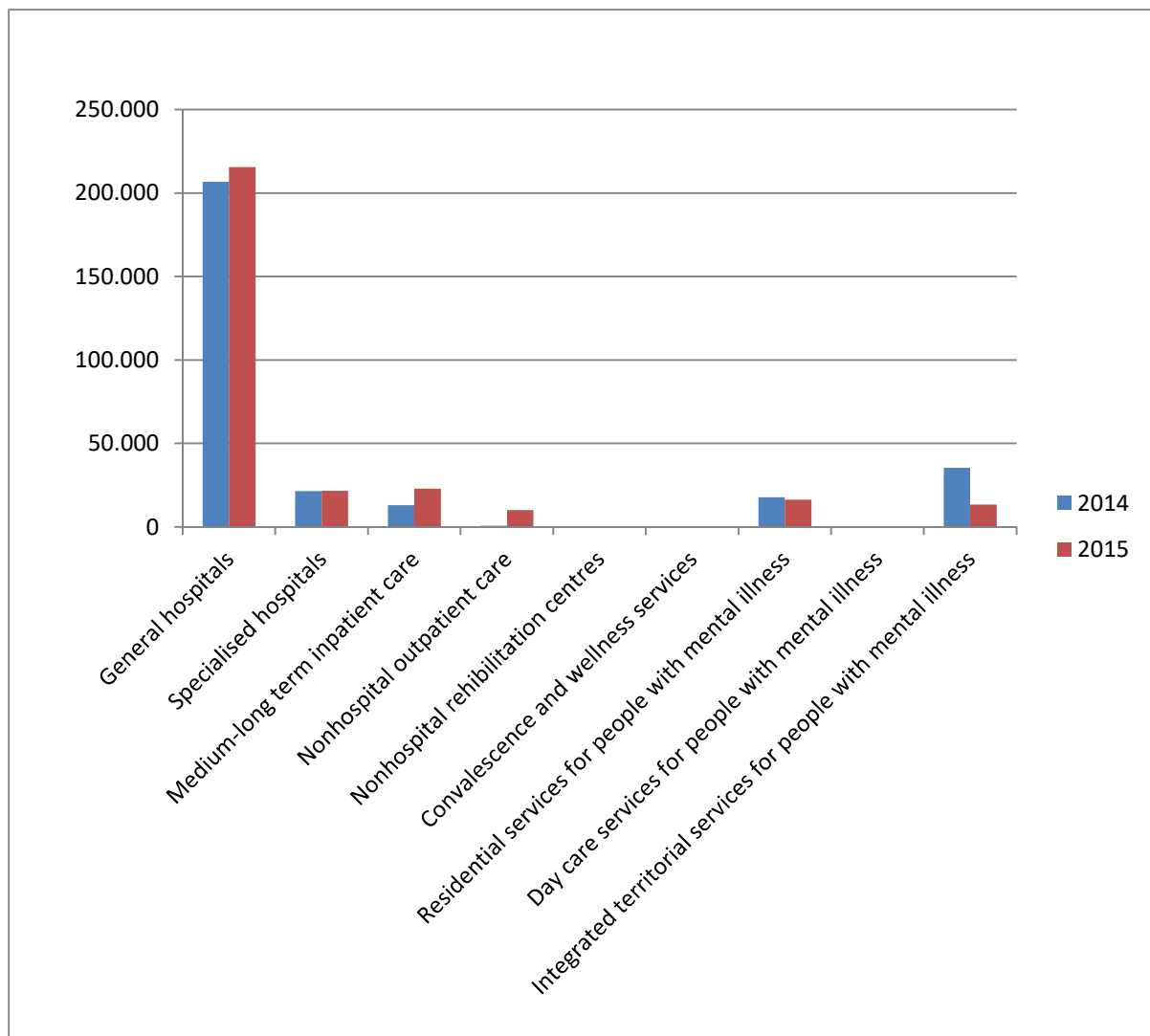


Number of admissions by care category, excluding hospitals



Day Hospitals, Day Care Centres and Day Surgeries

In 2015 there were just under 295,072 admissions in Day Hospitals, Day Care Centres and Day Surgeries



Day Hospitals, Day Care Centres and Day Surgeries (excluding general hospitals)

