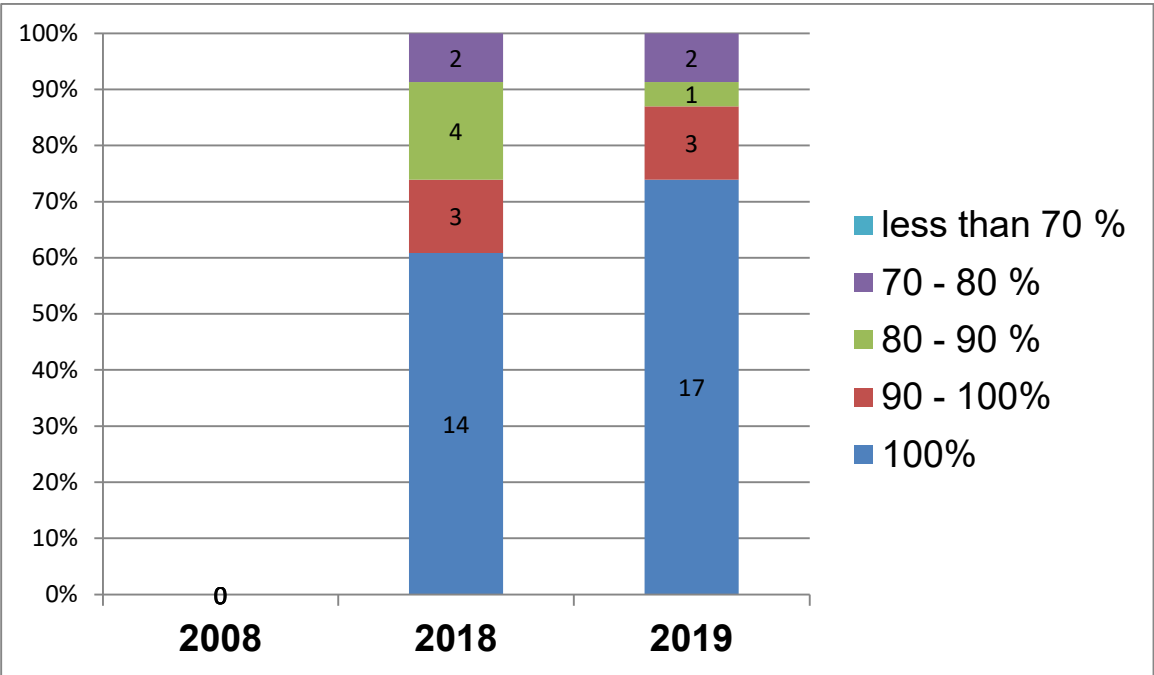


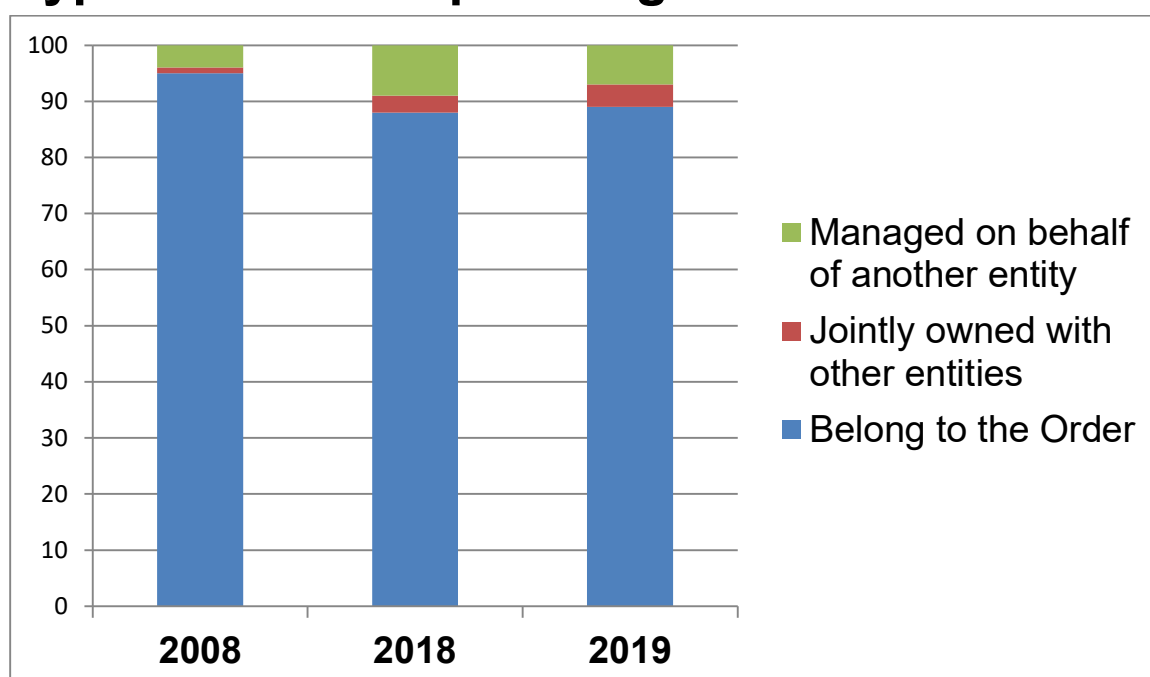
# Care Statistics - Comparison of the 2019 data with 2018 and 2008

On July 31 2021, the General Curia completed its analysis of the Order’s care data for the year 2019. The full report with more detailed information and analysis can be found on this website under “2019 Statistics – Report” (<http://www.ohsjd.org/Objects/Pagina.asp?ID=4441>). The following graphs provide a general overview of the figures and make short-term comparisons with 2018 and long-term comparisons with 2008.

## % of replies received to the questionnaires

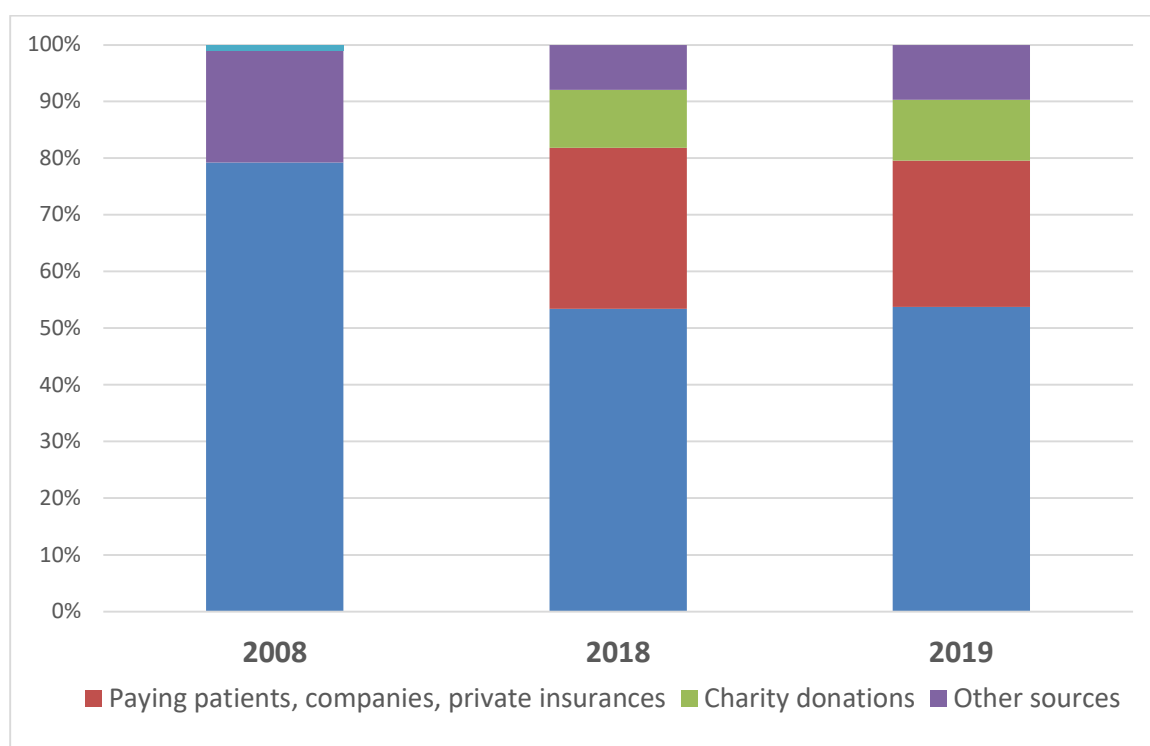


## Type of ownership/management of the centres

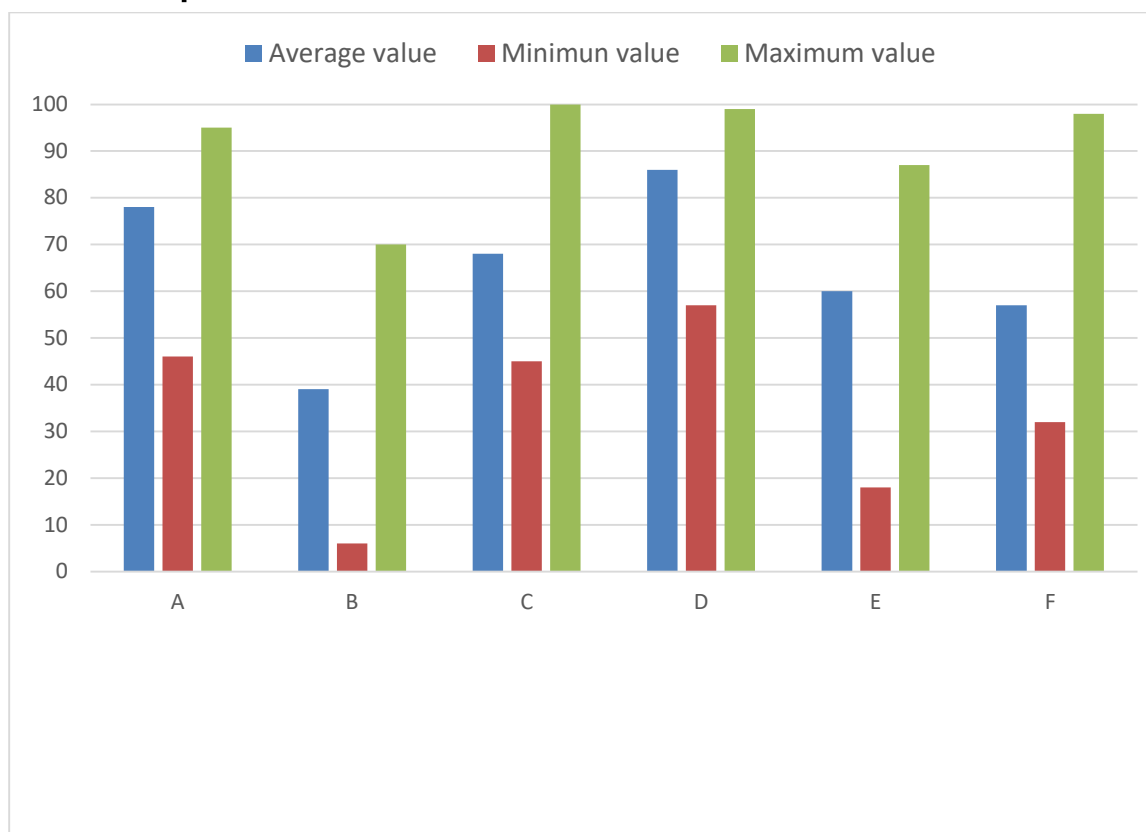


## The funding of the Order's centres

2



## Percentage of public funding in Europe and North America



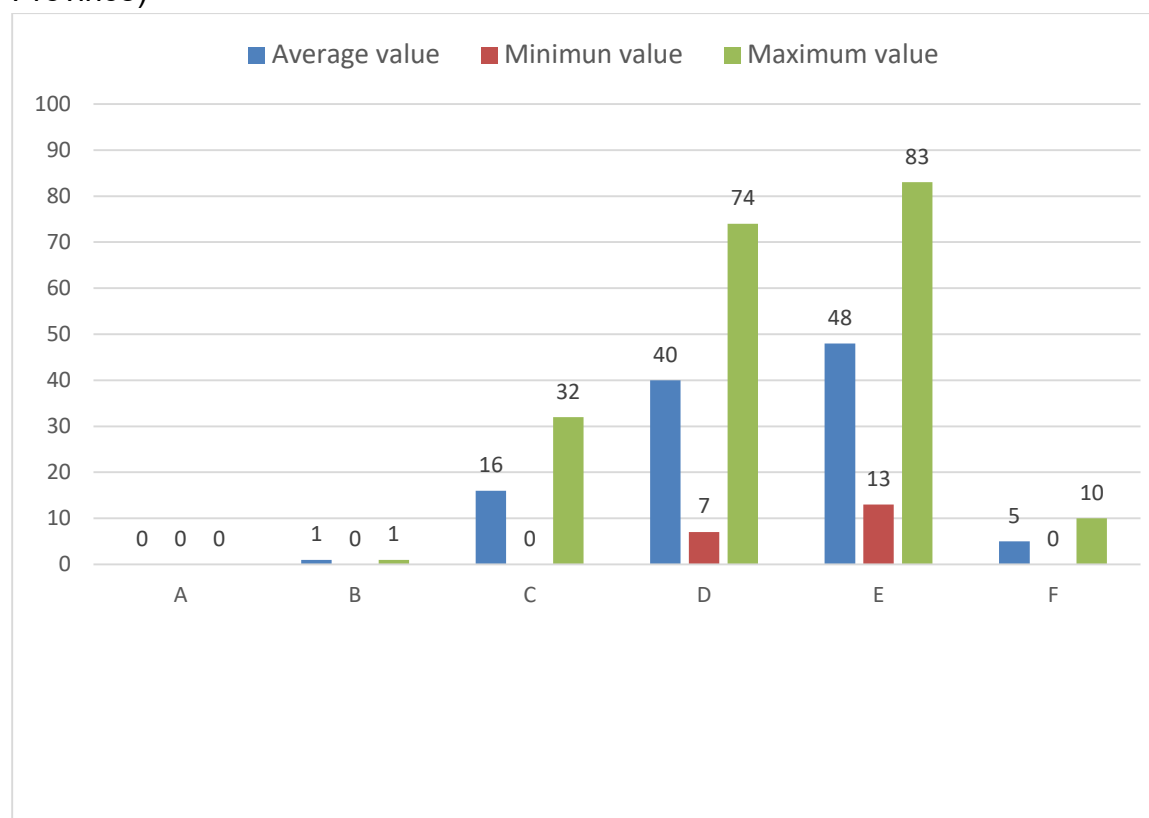
3

<b>A</b> Hospitals
<b>B</b> Non-hospital (primary health care) facilities
<b>C</b> Centres for people with mental disabilities
<b>D</b> Centres for people with physical, mental and sensorial disabilities
<b>E</b> Centres for the elderly
<b>F</b> Miscellaneous social-welfare facilities

# Percentage of public funding

## in Asia

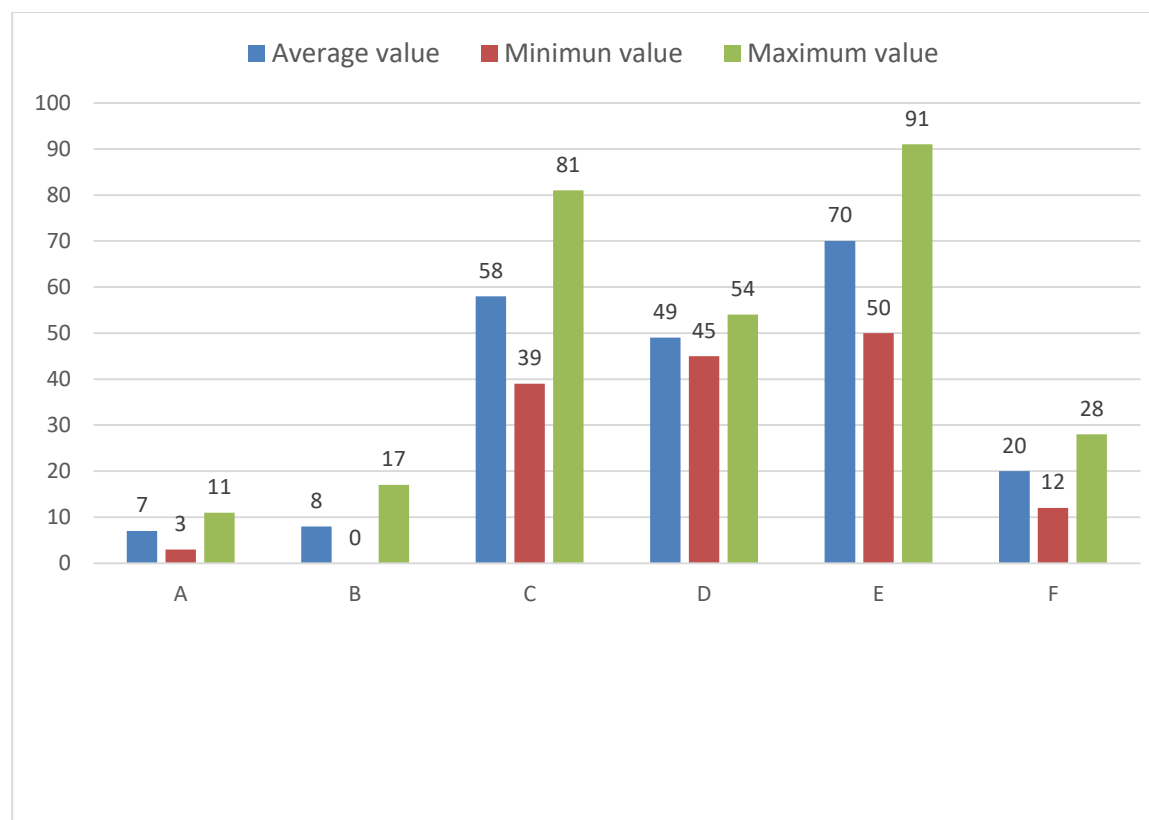
(excluding Philippines, since the data are included in the figures of the Romana Province and Timor Est since the data are included in the figures of the Portuguese Province)



<b>A</b> Hospitals
<b>B</b> Non-hospital (primary health care) facilities
<b>C</b> Centres for people with mental disabilities
<b>D</b> Centres for people with physical, mental and sensorial disabilities
<b>E</b> Centres for the elderly
<b>F</b> Miscellaneous social-welfare facilities

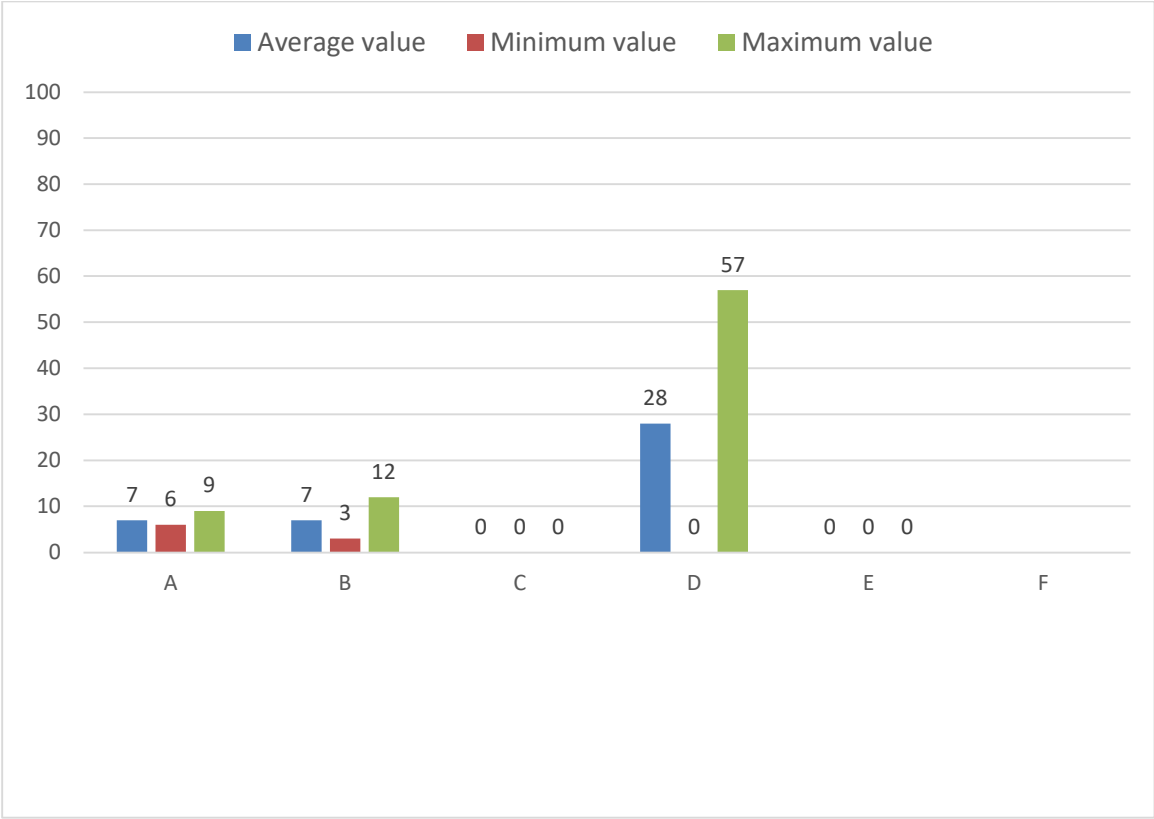
# Percentage of public funding in Central and South America

(excluding Brazil, since the data are included in the figures of the Portuguese Province).



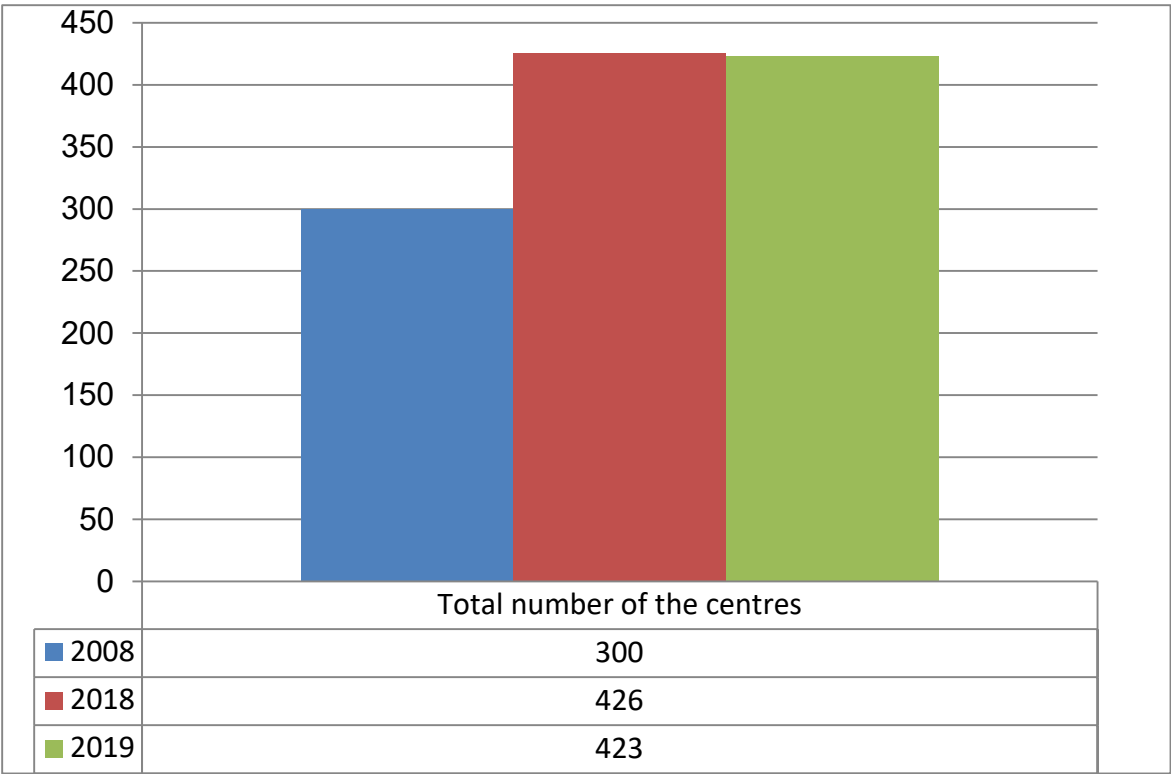
<b>A</b> Hospitals
<b>B</b> Non-hospital (primary health care) facilities
<b>C</b> Centres for people with mental disabilities
<b>D</b> Centres for people with physical, mental and sensorial disabilities
<b>E</b> Centres for the elderly
<b>F</b> Miscellaneous social-welfare facilities

# Percentage of public funding in Africa



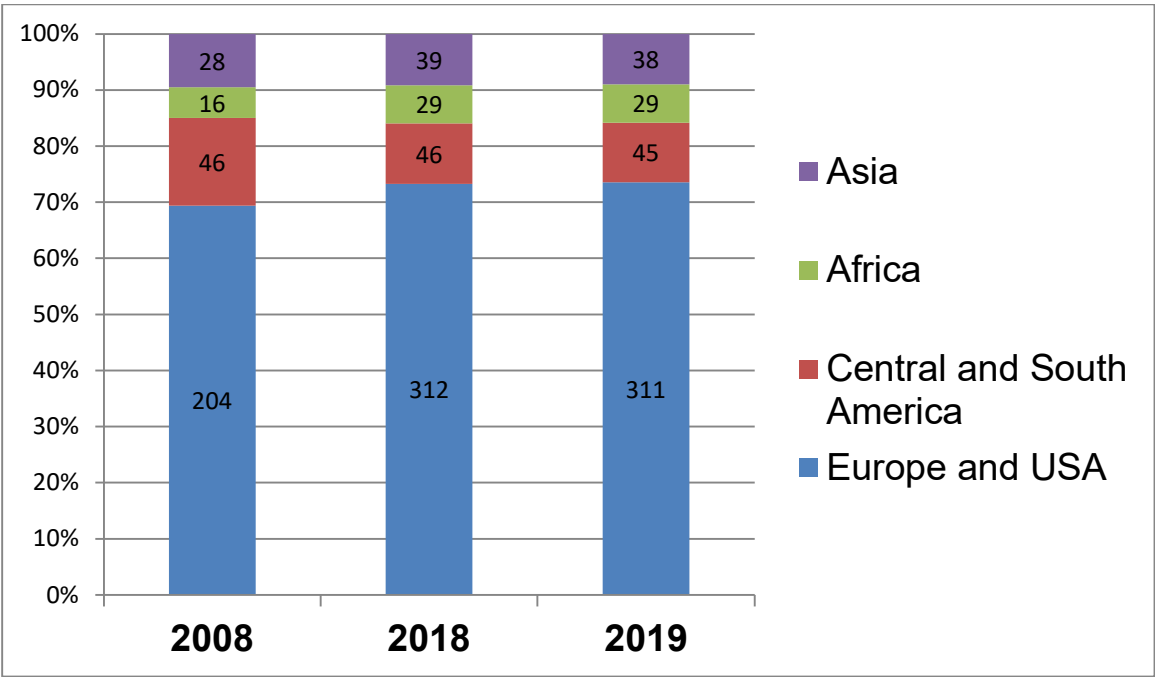
A	Hospitals
B	Non-hospital (primary health care) facilities
C	Centres for people with mental disabilities
D	Centres for people with physical, mental and sensorial disabilities
E	Centres for the elderly
F	Miscellaneous social-welfare facilities

# Total number of the centres

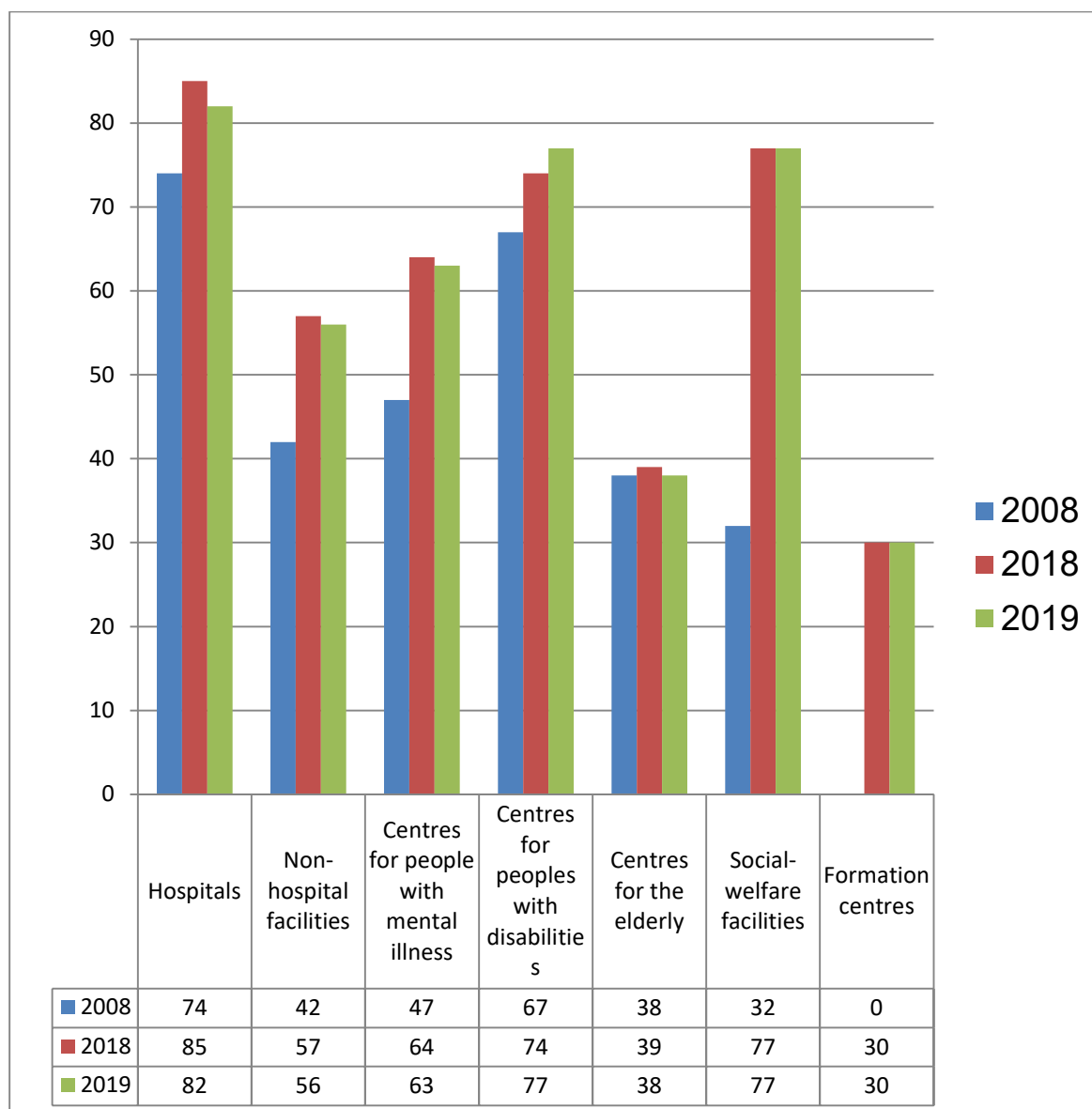


7

# The regional breakdown of the Centres



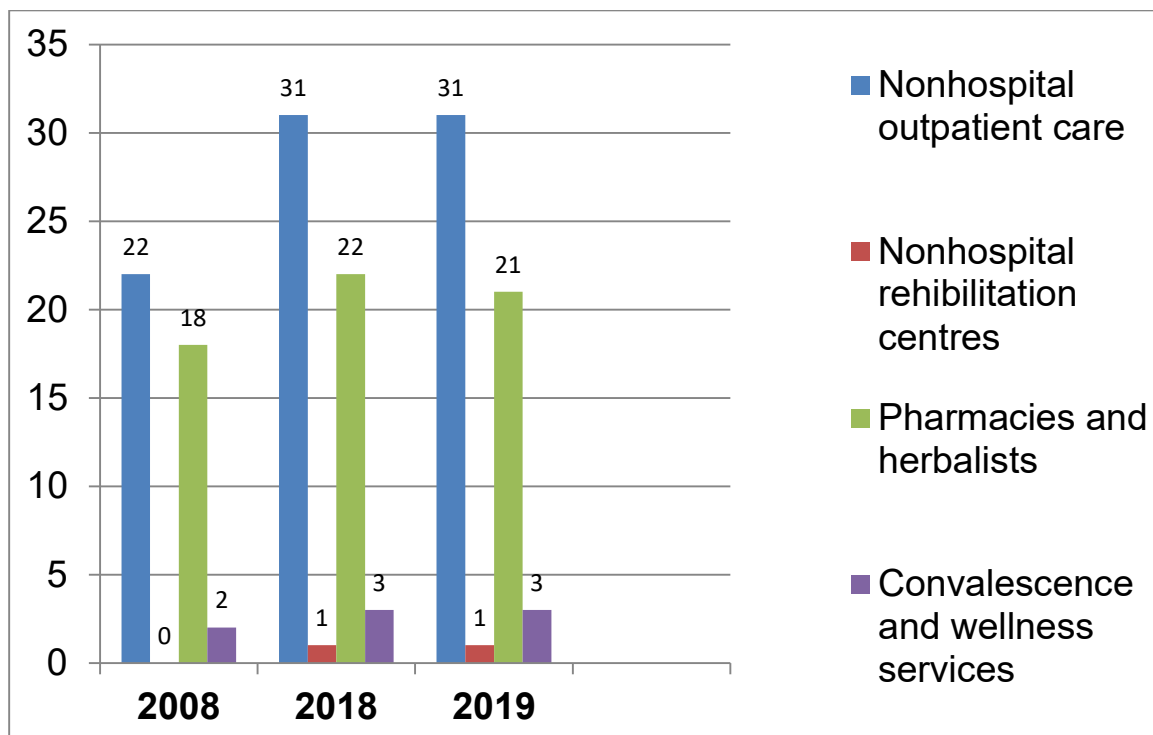
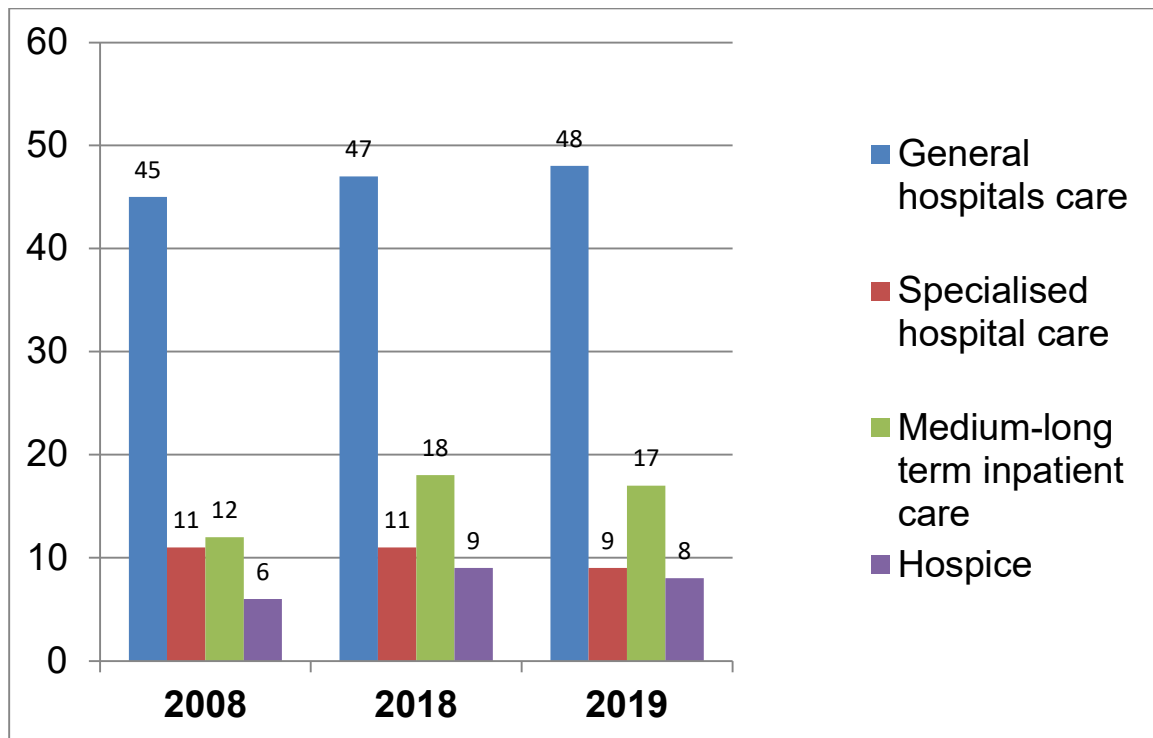
## Number of centres by care category

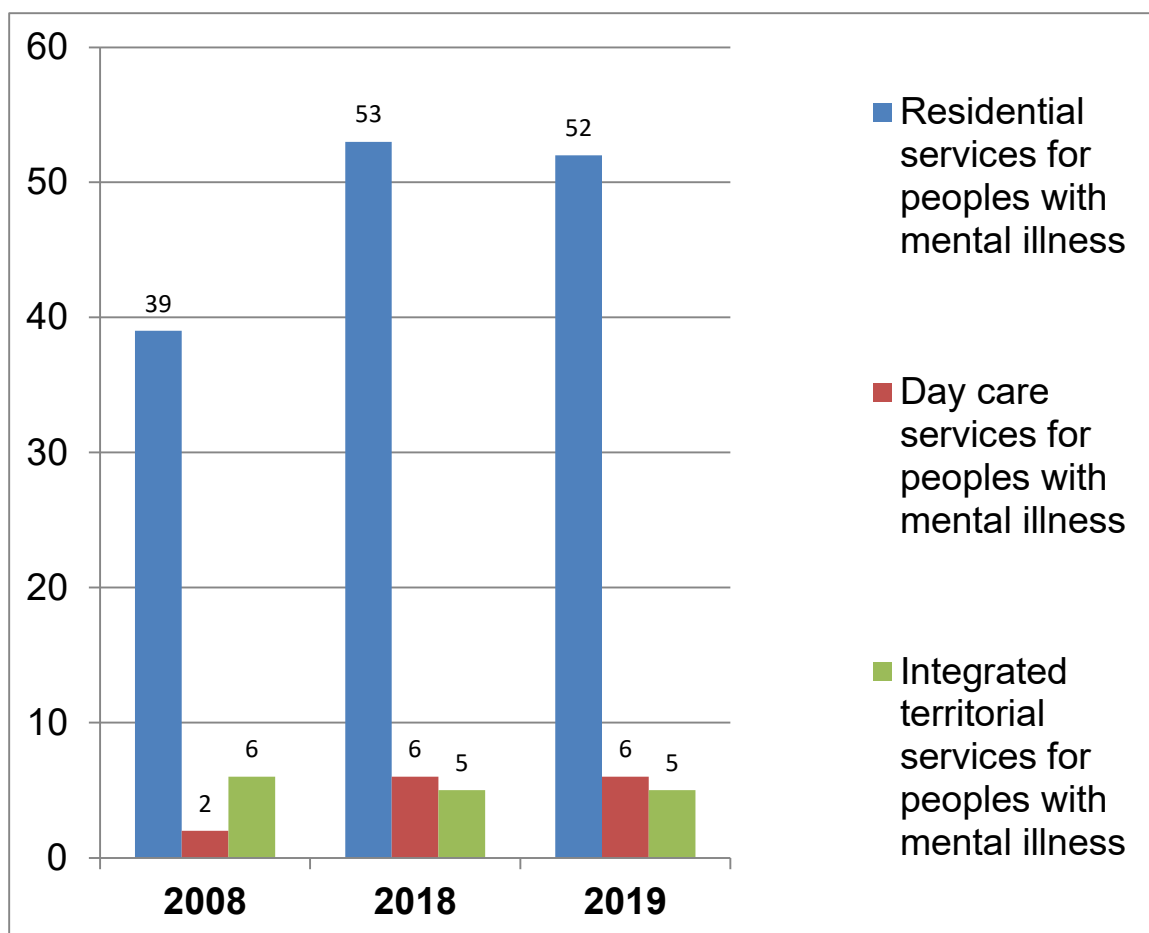


*The Formation/Training Centres were enumerated for the first time in 2018.*

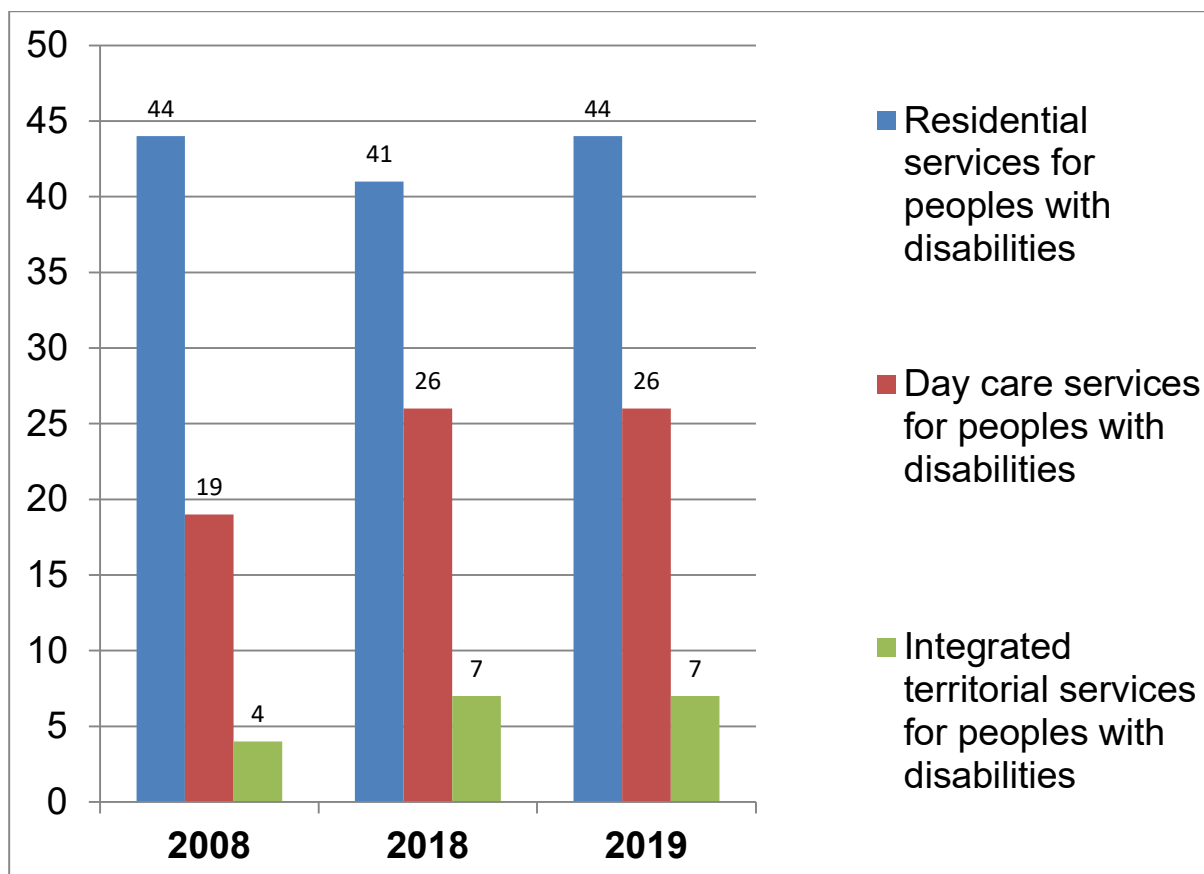


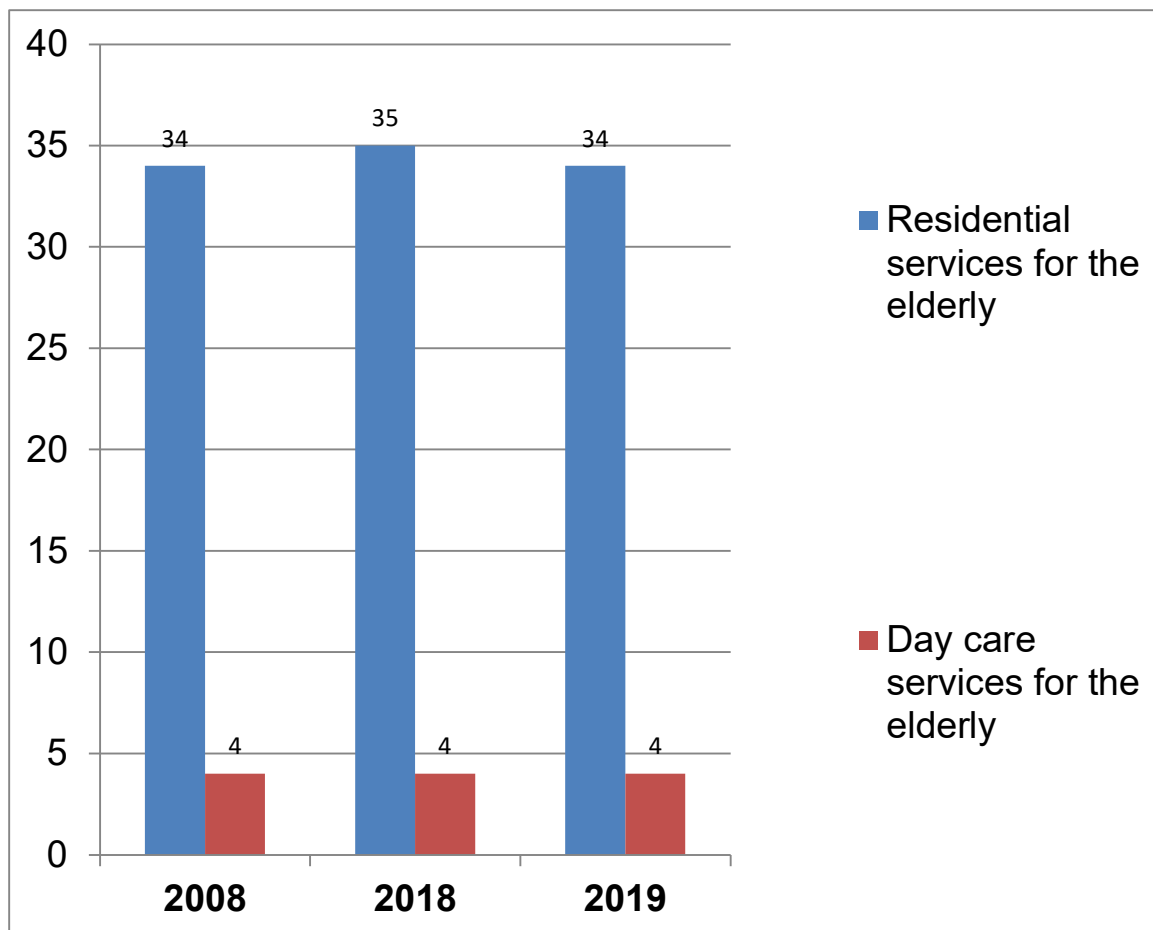
## Number of centres by type

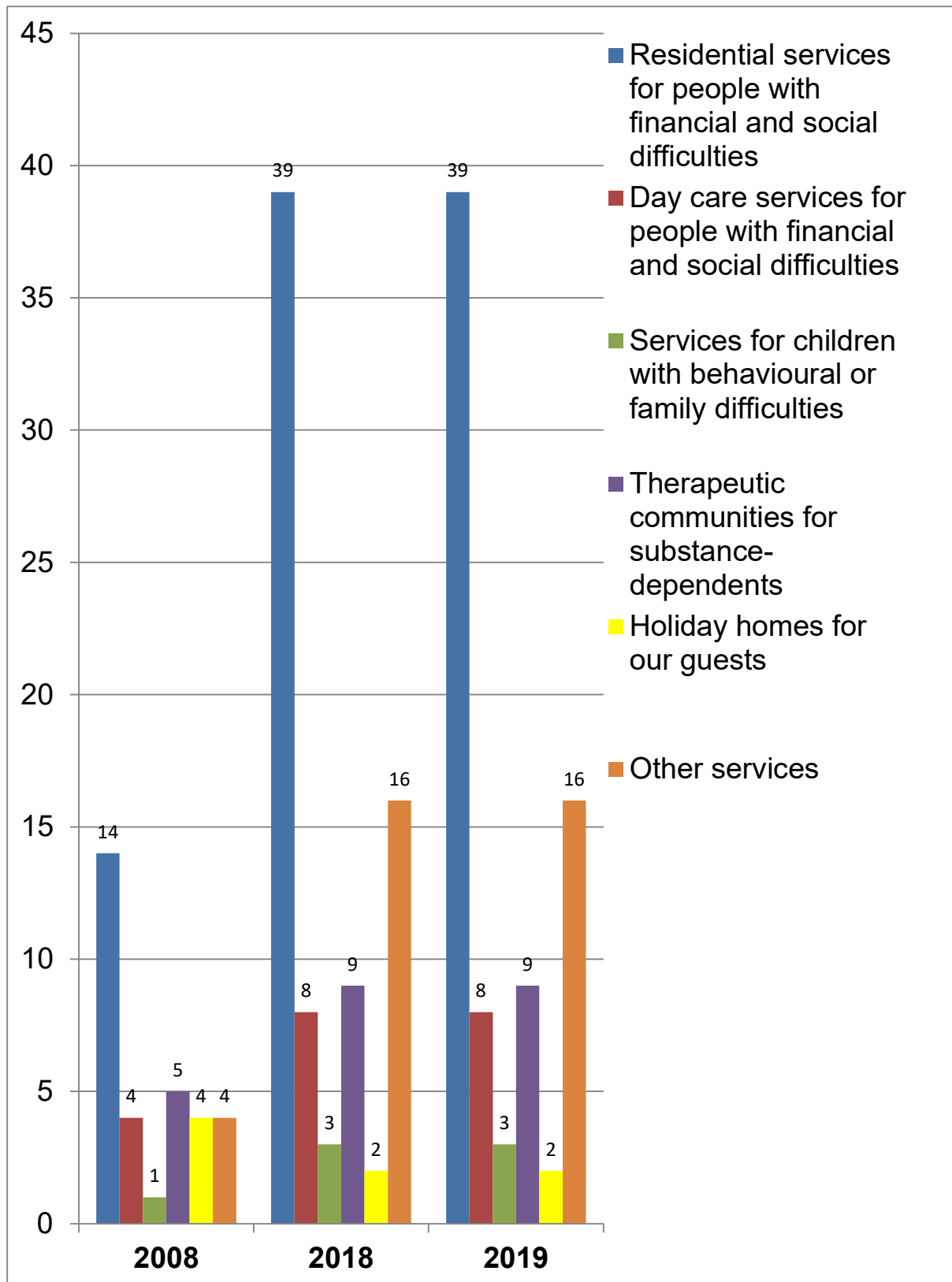




10

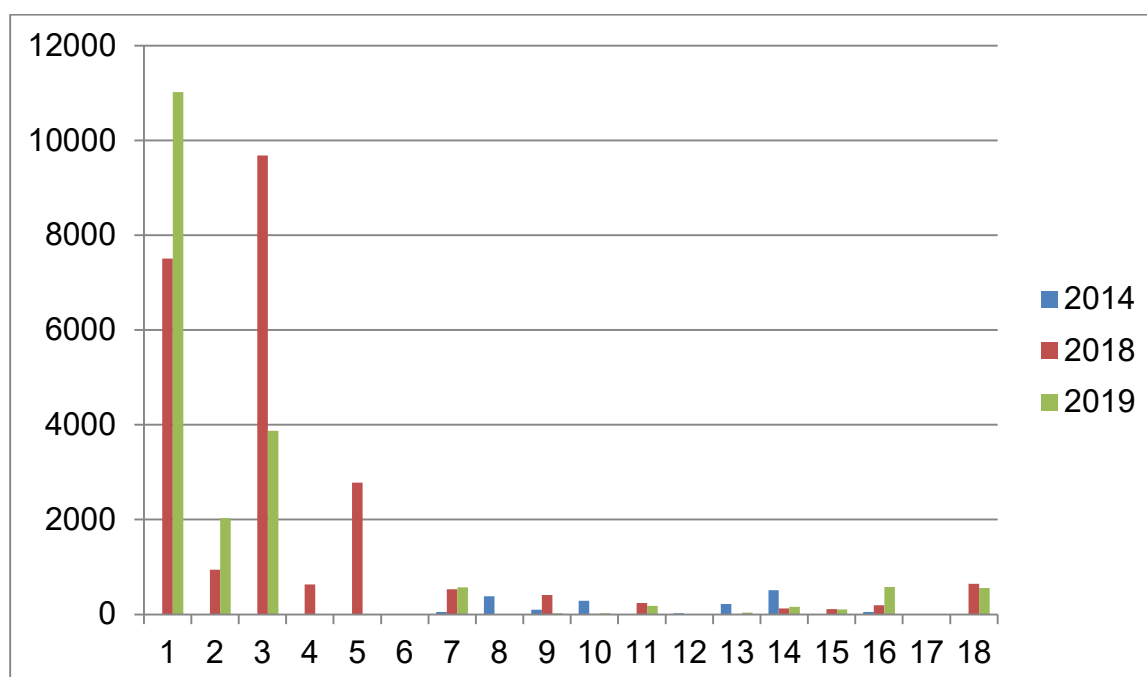






# Home care guests (including hospitals)

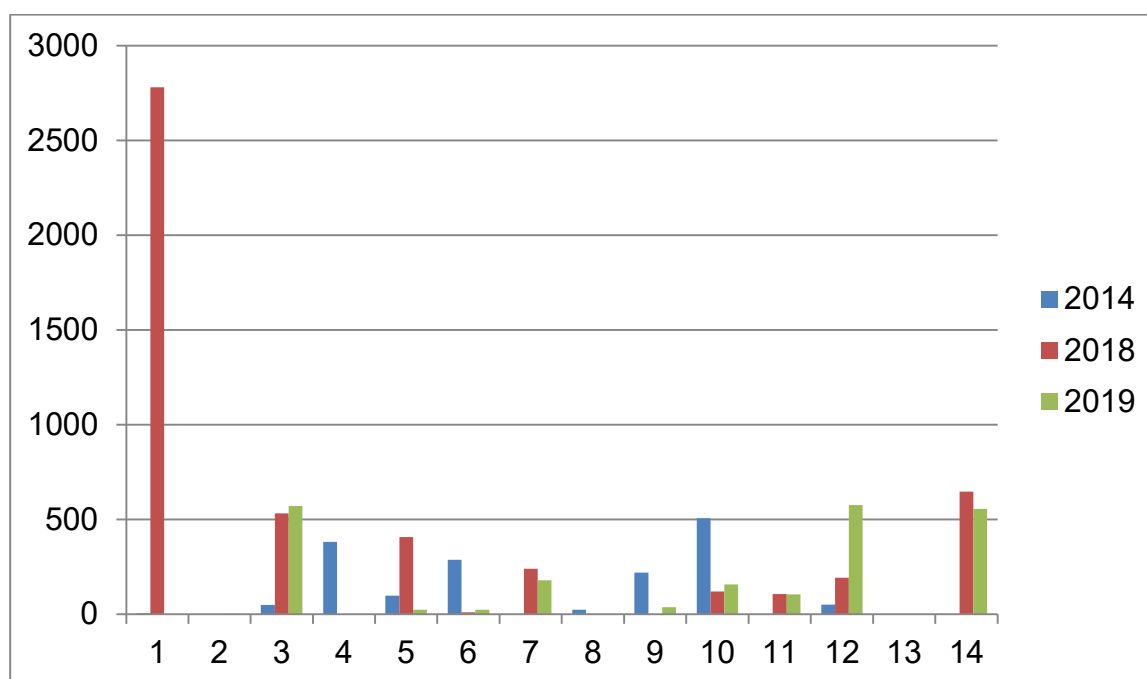
These figures were gathered for the first time in 2014



1 - General hospital care
2 - Specialised hospital care
3 -Medium/long-term inpatient care
4 - Hospice care
5 - Nonhospital outpatient care
6 - Convalescence and wellness services
7 - Residential or residential/daycare services for people with mental illness
8 - Day care services for people with mental illness
9 - Integrated territorial services for people with mental illness
10 - Residential or residential/daycare services for people with disabilities
11 - Day care services for people with disabilities
12 - Integrated territorial services for people with disabilities
13 - Residential or residential/daycare services for the elderly
14 - Day care services for the elderly
15 - Residential or residential/daycare services for people with financial and social difficulties
16 - Day care services for people in financial and social difficulties
17 - Services for children with behavioural or family difficulties
18 - Therapeutic communities for substance-dependents

## Home care guests (excluding hospitals)

These figures were gathered for the first time in 2014

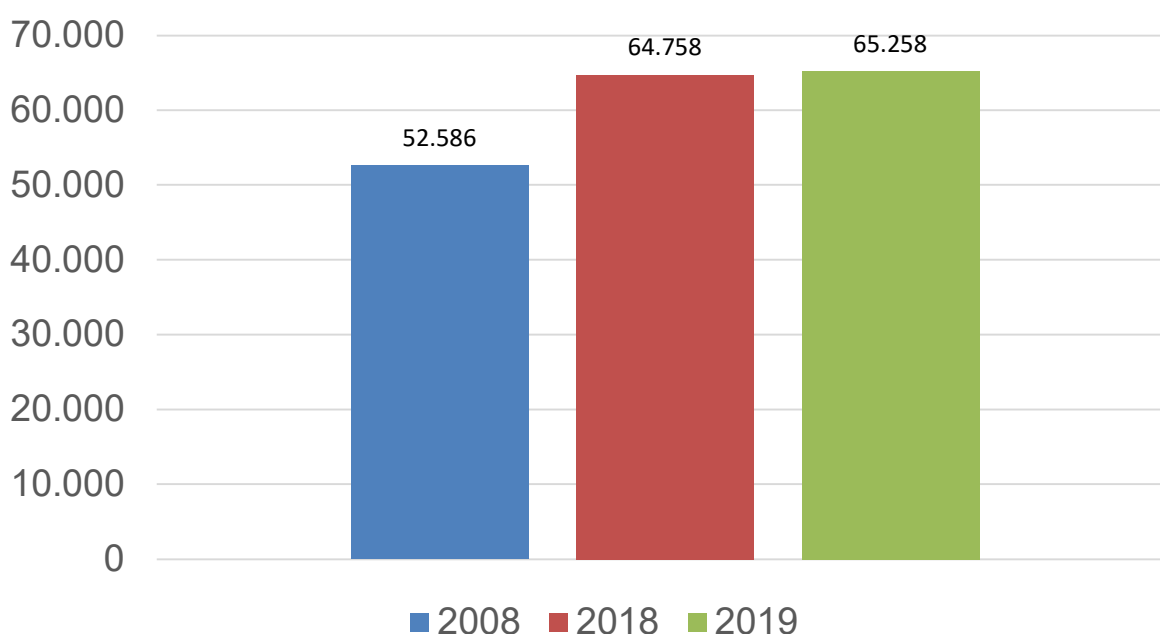


14

1 - Nonhospital outpatient care
2 - Convalescence and wellness services
3 - Residential or residential/daycare services for people with mental illness
4 - Day care services for people with mental illness
5 - Integrated territorial services for people with mental illness
6 - Residential or residential/daycare services for people with disabilities
7 - Day care services for people with disabilities
8 - Integrated territorial services for people with disabilities
9 - Residential or residential/daycare services for the elderly
10 - Day care services for the elderly
11 - Residential or residential/daycare services for people with financial and social difficulties
12 - Day care services for people in financial and social difficulties
13 - Services for children with behavioural or family difficulties
14 - Therapeutic communities for substance-dependents

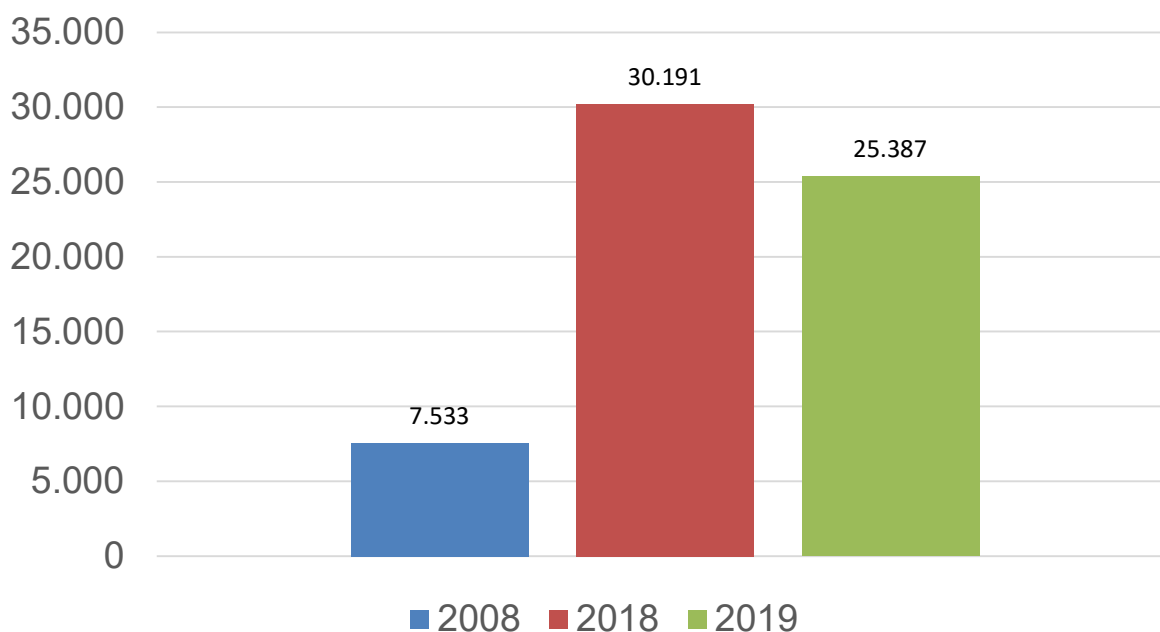
## The Hospitaller Family of Saint John of God

### Number of personnel \*



## The Hospitaller Family of Saint John of God

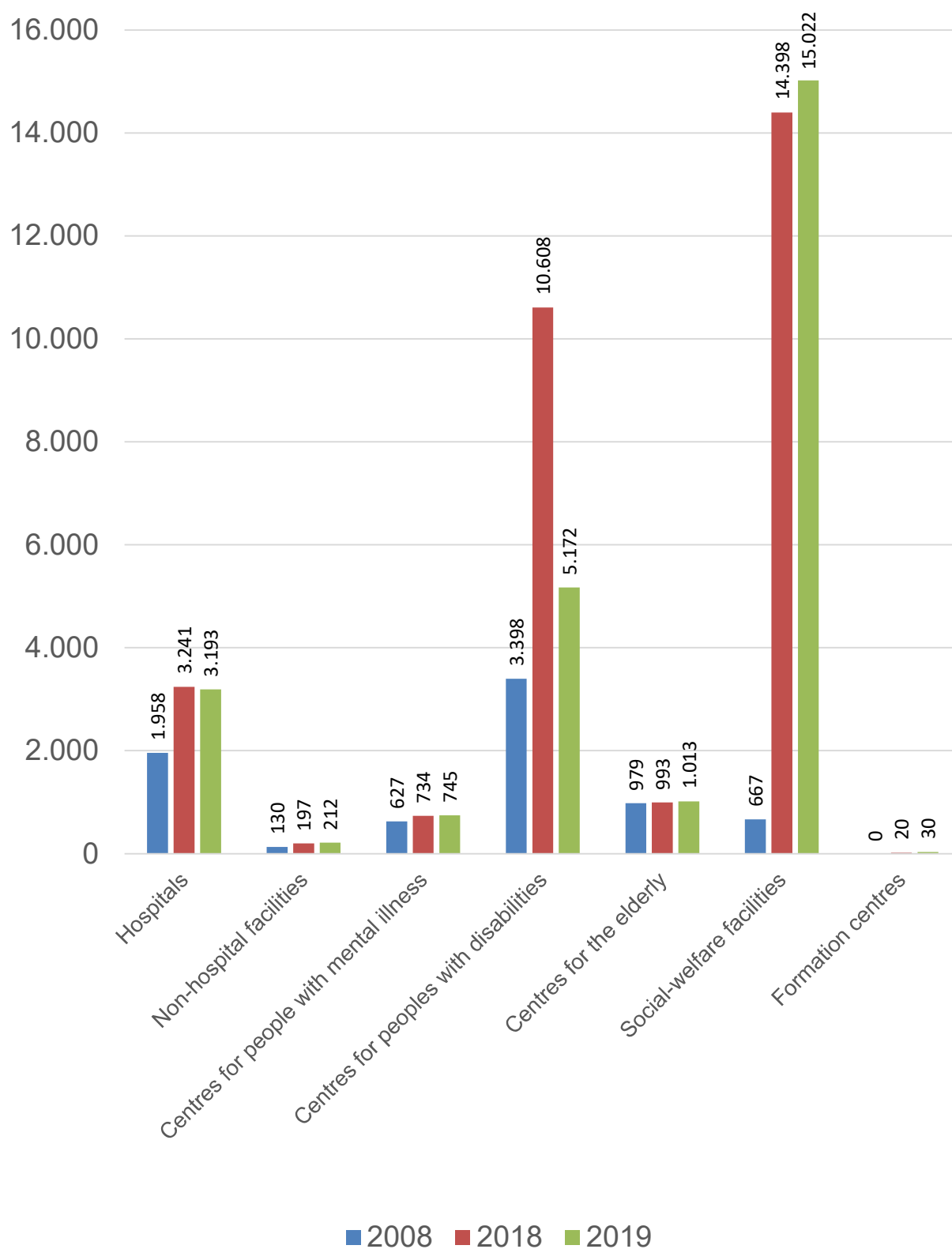
### Number of volunteers



\* Individuals, not posts

# The Hospitaller Family of Saint John of God

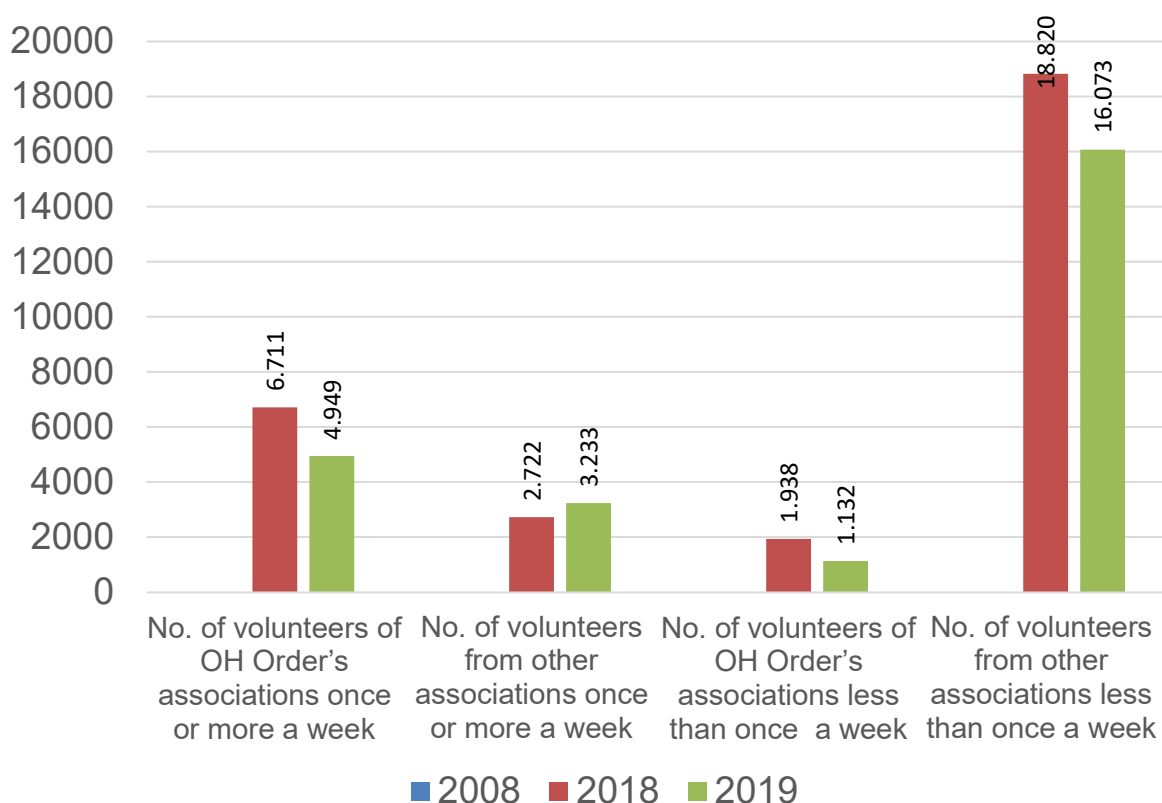
## Volunteers by care category



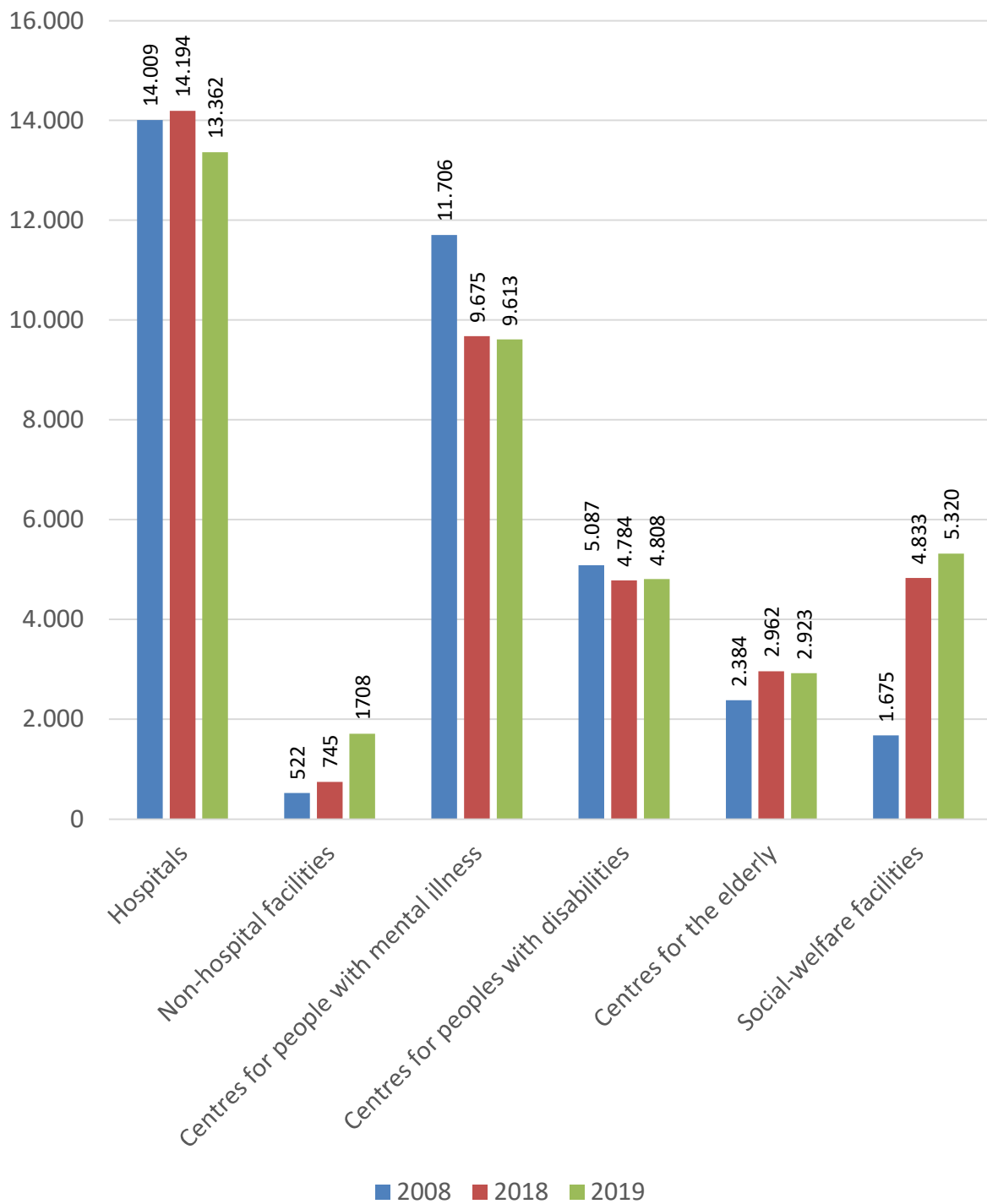


# The Hospitaller Family of Saint John of God

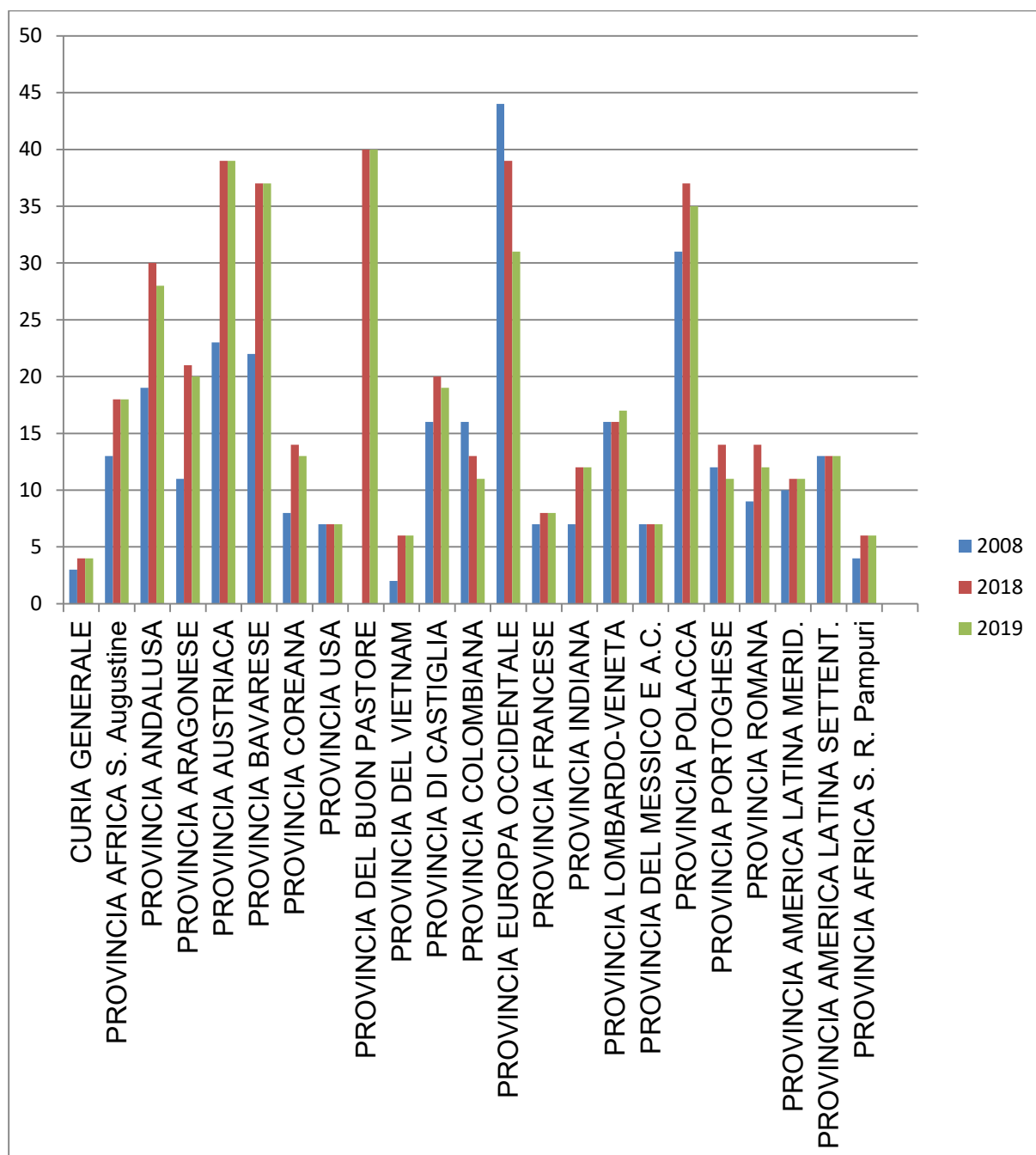
## Volunteers: frequency of presence



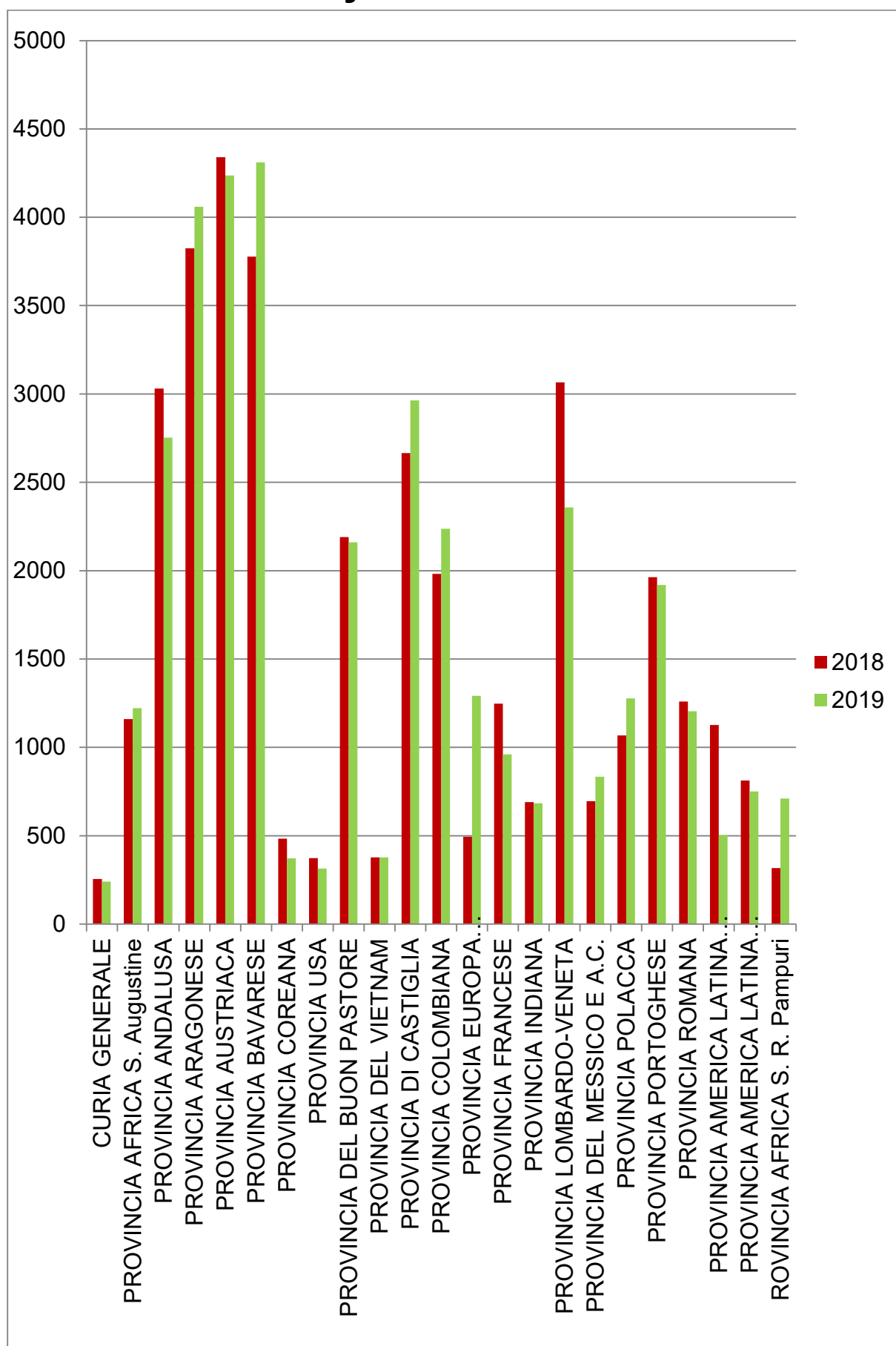
## Number of beds by care category



## Number of centres by Province

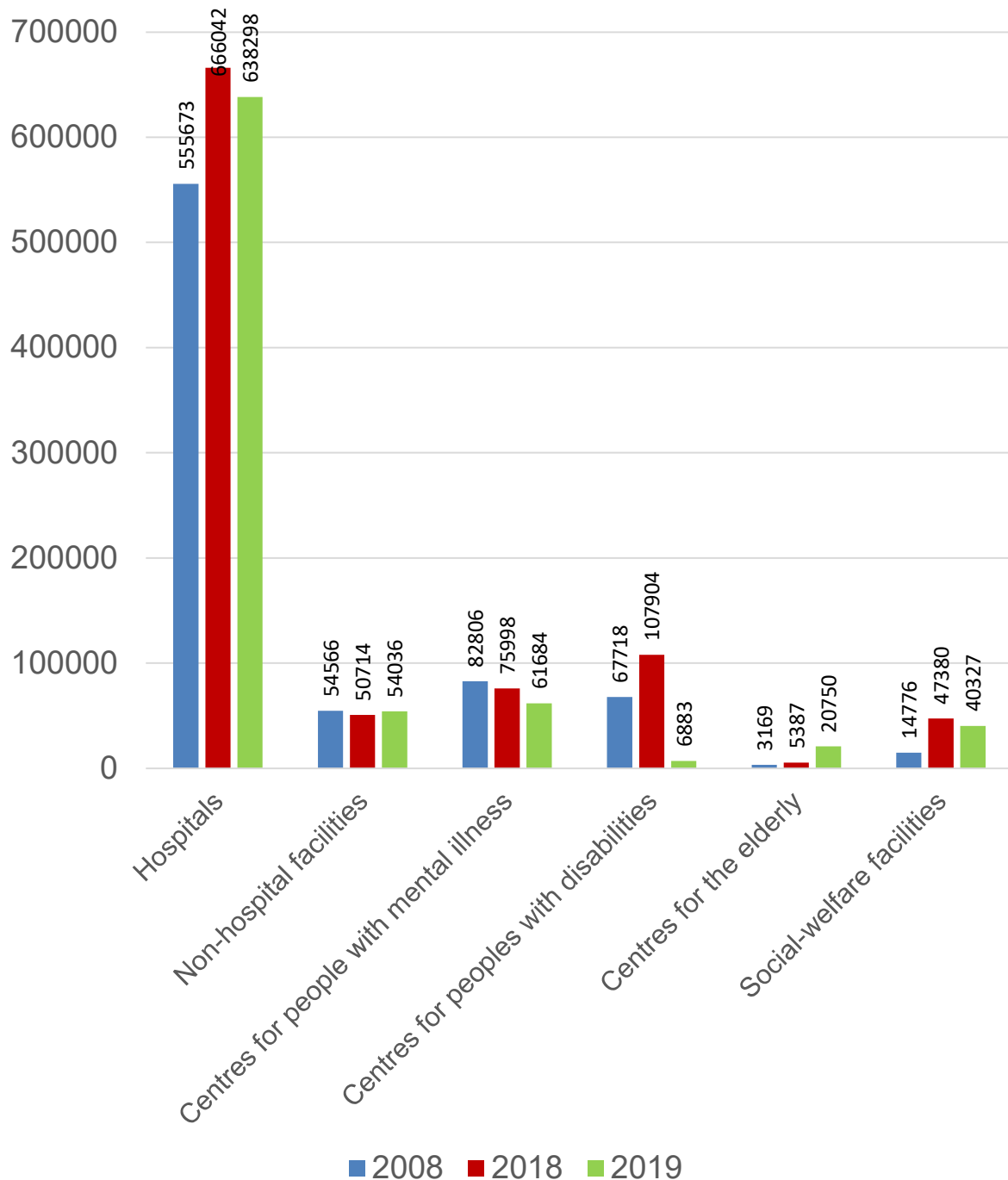


## Number of beds by Province

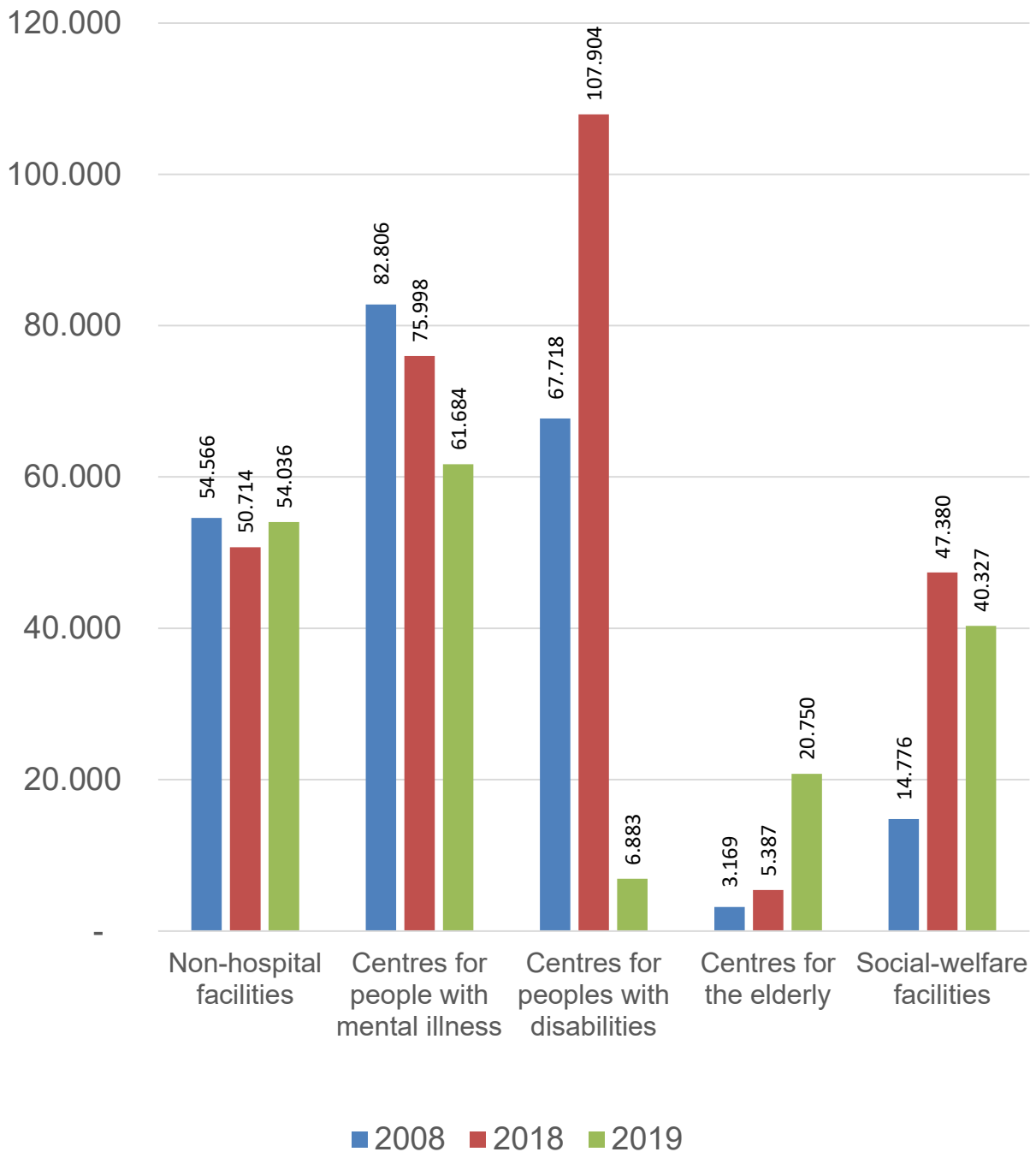


## Number of admissions by care category

(Excluding admissions to day hospitals, take care centres and day surgeries; see the pages 23 and 24)

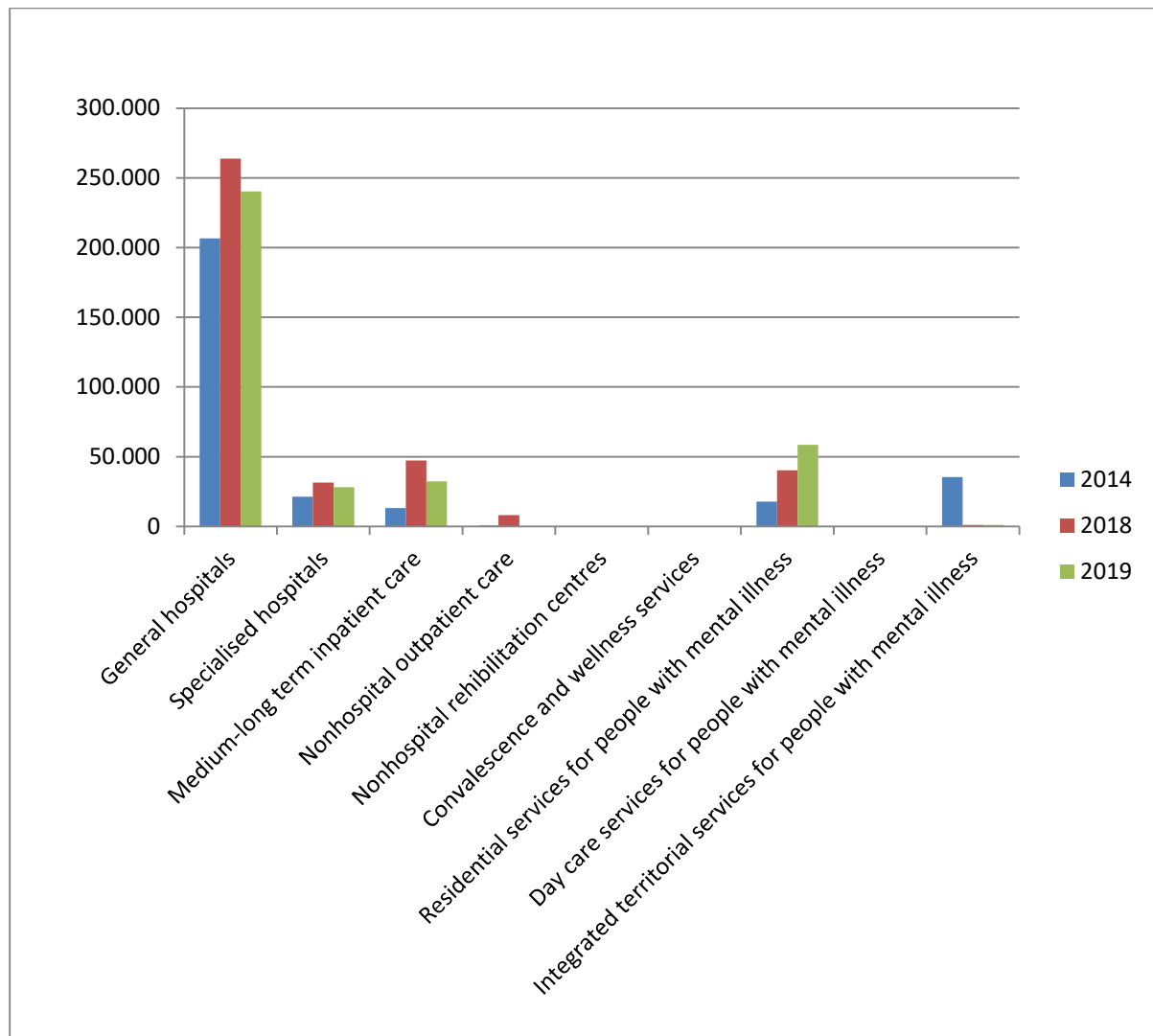


## Number of admissions by care category, excluding hospitals



## Day Hospitals, Day Care Centres and Day Surgeries

In 2019 there were just under 360,262 admissions in Day Hospitals, Day Care Centres and Day Surgeries



# Day Hospitals, Day Care Centres and Day Surgeries (excluding general hospitals)

